

**AES / Groucho Antibody (C-Terminus)**  
**Rabbit Polyclonal Antibody**  
**Catalog # ALS11373****Specification**

---

**AES / Groucho Antibody (C-Terminus) - Product Information**

Application	ICC, IF, WB, IHC
Primary Accession	<a href="#">Q08117</a>
Reactivity	Human, Mouse, Rat
Host	Rabbit
Clonality	Polyclonal
Calculated MW	22kDa KDa

**AES / Groucho Antibody (C-Terminus) - Additional Information****Gene ID** 166**Other Names**

Amino-terminal enhancer of split, Amino enhancer of split, Gp130-associated protein GAM, Grg-5, Groucho-related protein 5, Protein ESP1, Protein GRG, AES, GRG, GRG5

**Target/Specificity**

16 amino acid peptide from near the carboxy terminus of human AES

**Reconstitution & Storage**

Short term 4°C, long term aliquot and store at -20°C, avoid freeze thaw cycles. Store undiluted.

**Precautions**

AES / Groucho Antibody (C-Terminus) is for research use only and not for use in diagnostic or therapeutic procedures.

**AES / Groucho Antibody (C-Terminus) - Protein Information****Name** TLE5 ([HGNC:307](#))**Synonyms** AES, GRG, GRG5**Function**

Transcriptional corepressor. Acts as a dominant repressor towards other family members. Inhibits NF-kappa-B-regulated gene expression. May be required for the initiation and maintenance of the differentiated state. Essential for the transcriptional repressor activity of SIX3 during retina and lens development.

**Cellular Location**

Nucleus.

**Tissue Location**

Found predominantly in muscle, heart and Placenta. In fetal tissues, abundantly expressed in the

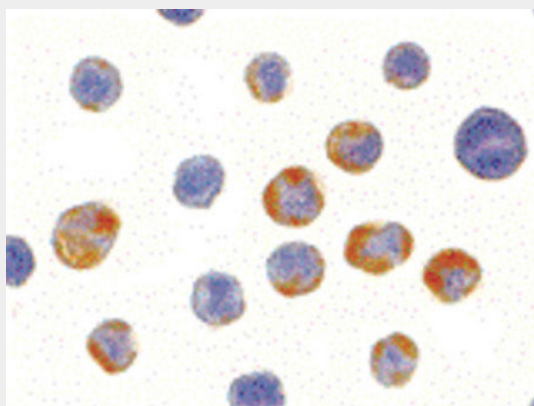
heart, lung, kidney, brain and liver

### **AES / Groucho Antibody (C-Terminus) - Protocols**

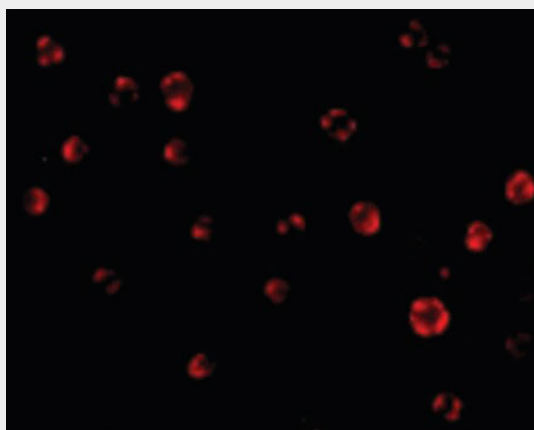
Provided below are standard protocols that you may find useful for product applications.

- [Western Blot](#)
- [Blocking Peptides](#)
- [Dot Blot](#)
- [Immunohistochemistry](#)
- [Immunofluorescence](#)
- [Immunoprecipitation](#)
- [Flow Cytometry](#)
- [Cell Culture](#)

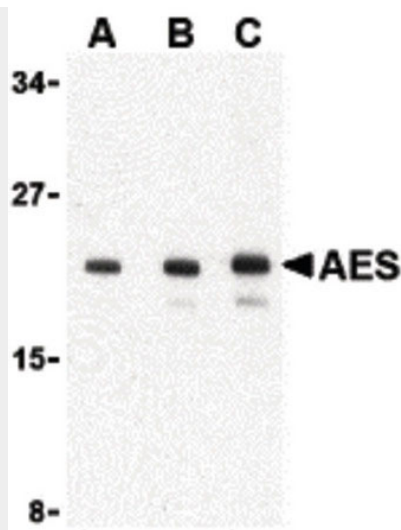
### **AES / Groucho Antibody (C-Terminus) - Images**



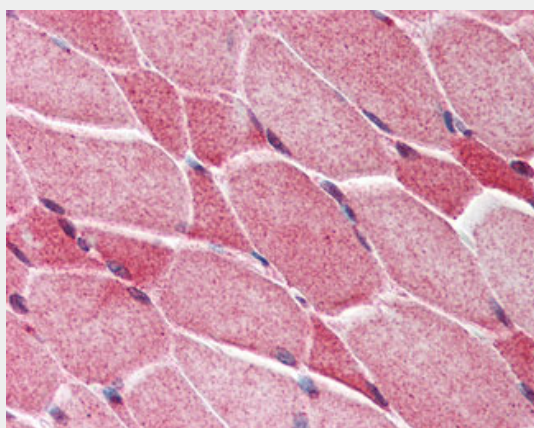
Immunocytochemistry of AES in HeLa cells with AES antibody at 10 ug/ml.



Immunofluorescence of AES in HeLa cells with AES antibody at 20 ug/ml.



Western blot of AES in 293 cell lysate with AES antibody at (A) 1, (B) 2 and (C) 4 ug/ml.



Anti-AES antibody IHC of human skeletal muscle.

### **AES / Groucho Antibody (C-Terminus) - Background**

Transcriptional corepressor. Acts as dominant repressor towards other family members. Inhibits NF-kappa-B-regulated gene expression. May be required for the initiation and maintenance of the differentiated state. Essential for the transcriptional repressor activity of SIX3 during retina and lens development.

### **AES / Groucho Antibody (C-Terminus) - References**

- Scala L.A.,et al.Submitted (DEC-1993) to the EMBL/GenBank/DDBJ databases.
- Hou E.W.,et al.DNA Cell Biol. 17:911-913(1998).
- Liu Y.,et al.Zhonghua Wei Sheng Wu Xue He Mian Yi Xue Za Zhi 18:106-110(1998).
- Ota T.,et al.Nat. Genet. 36:40-45(2004).
- Grimwood J.,et al.Nature 428:529-535(2004).