

PHAP III / ANP32E Antibody (C-Terminus)
Rabbit Polyclonal Antibody
Catalog # ALS11374**Specification**

PHAP III / ANP32E Antibody (C-Terminus) - Product Information

Application	WB, IHC-P, IF
Primary Accession	Q9BTT0
Reactivity	Human, Mouse, Rat
Host	Rabbit
Clonality	Polyclonal
Calculated MW	31kDa KDa
Dilution	WB~~1:1000 IHC-P~~N/A IF~~1:50~200

PHAP III / ANP32E Antibody (C-Terminus) - Additional Information**Gene ID** 81611**Other Names**

Acidic leucine-rich nuclear phosphoprotein 32 family member E, LANP-like protein, LANP-L, ANP32E

Target/Specificity

Synthetic peptide corresponding to amino acids close to carboxy terminus of human PHAP III

Reconstitution & Storage

Short term 4°C, long term aliquot and store at -20°C, avoid freeze thaw cycles. Store undiluted.

Precautions

PHAP III / ANP32E Antibody (C-Terminus) is for research use only and not for use in diagnostic or therapeutic procedures.

PHAP III / ANP32E Antibody (C-Terminus) - Protein Information**Name** ANP32E**Function**

Histone chaperone that specifically mediates the genome-wide removal of histone H2A.Z/H2AZ1 from the nucleosome: removes H2A.Z/H2AZ1 from its normal sites of deposition, especially from enhancer and insulator regions. Not involved in deposition of H2A.Z/H2AZ1 in the nucleosome. May stabilize the evicted H2A.Z/H2AZ1-H2B dimer, thus shifting the equilibrium towards dissociation and the off-chromatin state (PubMed:24463511). Inhibits activity of protein phosphatase 2A (PP2A). Does not inhibit protein phosphatase 1. May play a role in cerebellar development and synaptogenesis.

Cellular Location

Cytoplasm. Nucleus.

Tissue Location

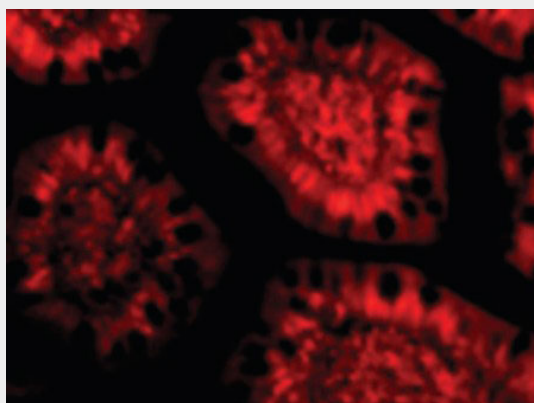
Expressed in peripheral blood leukocytes, colon, small intestine, prostate, thymus, spleen, skeletal muscle, liver and kidney.

PHAP III / ANP32E Antibody (C-Terminus) - Protocols

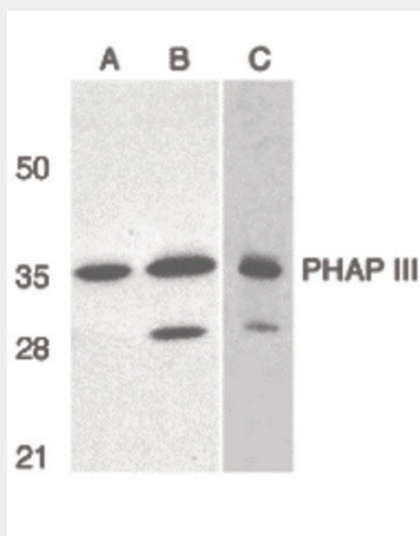
Provided below are standard protocols that you may find useful for product applications.

- [Western Blot](#)
- [Blocking Peptides](#)
- [Dot Blot](#)
- [Immunohistochemistry](#)
- [Immunofluorescence](#)
- [Immunoprecipitation](#)
- [Flow Cytometry](#)
- [Cell Culture](#)

PHAP III / ANP32E Antibody (C-Terminus) - Images



Immunofluorescence of PHAP III in Human Small Intestine cells with PHAP III antibody at 10 ug/ml.



Western blot of PHAP III expression in human A549 (A) and HepG2 (B) cells, and rat testis (C)...

PHAP III / ANP32E Antibody (C-Terminus) - Background

Histone chaperone that specifically mediates the genome- wide removal of histone H2A.Z/H2AFZ from the nucleosome: removes H2A.Z/H2AFZ from its normal sites of deposition, especially from enhancer and insulator regions. Not involved in deposition of H2A.Z/H2AFZ in the nucleosome. May stabilize the evicted H2A.Z/H2AFZ-H2B dimer, thus shifting the equilibrium towards dissociation and the off-chromatin state (PubMed:24463511). Inhibits activity of protein phosphatase 2A (PP2A). Does not inhibit protein phosphatase 1. May play a role in cerebellar development and synaptogenesis.

PHAP III / ANP32E Antibody (C-Terminus) - References

Jiang M.,et al.Cytogenet. Genome Res. 97:68-71(2002).
Ota T.,et al.Nat. Genet. 36:40-45(2004).
Bechtel S.,et al.BMC Genomics 8:399-399(2007).
Gregory S.G.,et al.Nature 441:315-321(2006).
Mural R.J.,et al.Submitted (SEP-2005) to the EMBL/GenBank/DDBJ databases.