

**C1QTNF4 / CTRP4 Antibody (Internal)**  
**Rabbit Polyclonal Antibody**  
**Catalog # ALS11397****Specification**

---

**C1QTNF4 / CTRP4 Antibody (Internal) - Product Information**

Application	IF, WB, IHC
Primary Accession	<a href="#">O9BXJ3</a>
Reactivity	Human, Mouse, Rat
Host	Rabbit
Clonality	Polyclonal
Calculated MW	35kDa KDa

**C1QTNF4 / CTRP4 Antibody (Internal) - Additional Information****Gene ID** 114900**Other Names**

Complement C1q tumor necrosis factor-related protein 4, C1QTNF4, CTRP4

**Target/Specificity**

16 amino acid peptide from near the center of human CTRP4

**Reconstitution & Storage**

Short term 4°C, long term aliquot and store at -20°C, avoid freeze thaw cycles. Store undiluted.

**Precautions**

C1QTNF4 / CTRP4 Antibody (Internal) is for research use only and not for use in diagnostic or therapeutic procedures.

**C1QTNF4 / CTRP4 Antibody (Internal) - Protein Information****Name** C1QTNF4**Synonyms** CTRP4**Function**

May be involved in the regulation of the inflammatory network. Its role as pro- or anti-inflammatory seems to be context dependent (PubMed:<a href="http://www.uniprot.org/citations/21658842" target="\_blank">21658842</a>, PubMed:<a href="http://www.uniprot.org/citations/27086950" target="\_blank">27086950</a>). Seems to have some role in regulating food intake and energy balance when administered in the brain. This effect is sustained over a two-day period, and it is accompanied by decreased expression of orexigenic neuropeptides in the hypothalamus 3 hours post-injection (By similarity).

**Cellular Location**

Secreted.

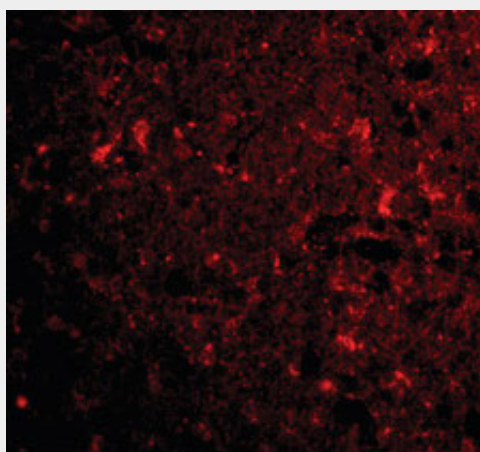
**Tissue Location**

Widely expressed at low levels (PubMed:21658842). Highest levels in adipocyte tissue and brain (PubMed:24366864)

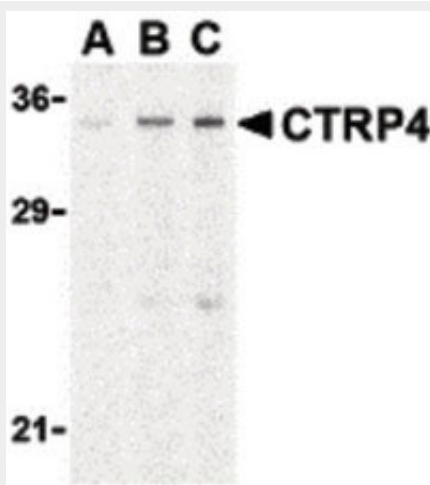
**C1QTNF4 / CTRP4 Antibody (Internal) - Protocols**

Provided below are standard protocols that you may find useful for product applications.

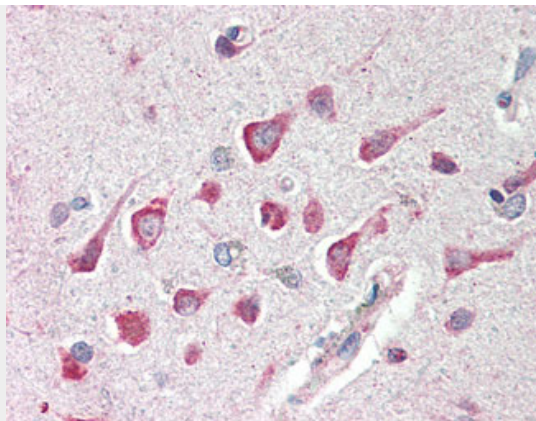
- [Western Blot](#)
- [Blocking Peptides](#)
- [Dot Blot](#)
- [Immunohistochemistry](#)
- [Immunofluorescence](#)
- [Immunoprecipitation](#)
- [Flow Cytometry](#)
- [Cell Culture](#)

**C1QTNF4 / CTRP4 Antibody (Internal) - Images**

Immunofluorescence of CTRP4 in human brain tissue with CTRP4 antibody at 20 ug/ml.



Western blot of CTRP4 in rat brain cell lysate with CTRP4 antibody at (A) 1, (B) 2, and (C) 4 ug/ml.



Anti-C1QTNF4 / CTRP4 antibody IHC of human brain, cortex.

#### **C1QTNF4 / CTRP4 Antibody (Internal) - Background**

May act as a pro-inflammatory cytokine, that induces the activation of NF-kappa-B signaling pathway and up-regulates IL6 production.

#### **C1QTNF4 / CTRP4 Antibody (Internal) - References**

Holloway J.L.,et al.Submitted (DEC-2000) to the EMBL/GenBank/DDBJ databases.  
Li Q.,et al.Cancer Lett. 308:203-214(2011).