

**CARD9 Antibody (aa521-536)**  
**Rabbit Polyclonal Antibody**  
**Catalog # ALS11404****Specification**

---

**CARD9 Antibody (aa521-536) - Product Information**

Application	WB, IHC-P, ICC
Primary Accession	<a href="#">Q9H257</a>
Reactivity	Human, Monkey
Host	Rabbit
Clonality	Polyclonal
Calculated MW	62kDa KDa
Dilution	WB~~1:1000 IHC-P~~N/A ICC~~N/A

**CARD9 Antibody (aa521-536) - Additional Information****Gene ID** 64170**Other Names**

Caspase recruitment domain-containing protein 9, hCARD9, CARD9

**Target/Specificity**

Synthetic peptide (DRENTTGSDNTDTEGS) corresponding to amino acids 521 to 536 of human CARD9. The sequence is different from that of rat origin by two amino acids.

**Reconstitution & Storage**

Short term 4°C, long term aliquot and store at -20°C, avoid freeze thaw cycles. Store undiluted.

**Precautions**

CARD9 Antibody (aa521-536) is for research use only and not for use in diagnostic or therapeutic procedures.

**CARD9 Antibody (aa521-536) - Protein Information****Name** CARD9 {ECO:0000303|PubMed:11053425, ECO:0000312|HGNC:HGNC:16391}**Function**

Adapter protein that plays a key role in innate immune response against fungi by forming signaling complexes downstream of C- type lectin receptors (PubMed:<a href="http://www.uniprot.org/citations/26961233" target="\_blank">26961233</a>, PubMed:<a href="http://www.uniprot.org/citations/33558980" target="\_blank">33558980</a>). CARD9-mediated signals are essential for antifungal immunity against a subset of fungi from the phylum Ascomycota (PubMed:<a href="http://www.uniprot.org/citations/24231284" target="\_blank">24231284</a>, PubMed:<a href="http://www.uniprot.org/citations/25057046" target="\_blank">25057046</a>, PubMed:<a href="http://www.uniprot.org/citations/25702837" target="\_blank">25702837</a>, PubMed:<a href="http://www.uniprot.org/citations/26521038" target="\_blank">26521038</a>).

target="\_blank">26521038</a>, PubMed:<a href="http://www.uniprot.org/citations/26679537" target="\_blank">26679537</a>, PubMed:<a href="http://www.uniprot.org/citations/26961233" target="\_blank">26961233</a>, PubMed:<a href="http://www.uniprot.org/citations/27777981" target="\_blank">27777981</a>, PubMed:<a href="http://www.uniprot.org/citations/29080677" target="\_blank">29080677</a>, PubMed:<a href="http://www.uniprot.org/citations/33558980" target="\_blank">33558980</a>). Transduces signals in myeloid cells downstream of C-type lectin receptors CLEC7A (dectin-1), CLEC6A (dectin-2) and CLEC4E (Mincle), which detect pathogen-associated molecular pattern metabolites (PAMPs), such as fungal carbohydrates, and trigger CARD9 activation (By similarity). Upon activation, CARD9 homooligomerizes to form a nucleating helical template that recruits BCL10 via CARD-CARD interaction, thereby promoting polymerization of BCL10 and subsequent recruitment of MALT1: this leads to activation of NF-kappa-B and MAP kinase p38 (MAPK11, MAPK12, MAPK13 and/or MAPK14) pathways which stimulate expression of genes encoding pro-inflammatory cytokines and chemokines (PubMed:<a href="http://www.uniprot.org/citations/11053425" target="\_blank">11053425</a>, PubMed:<a href="http://www.uniprot.org/citations/26488816" target="\_blank">26488816</a>, PubMed:<a href="http://www.uniprot.org/citations/26961233" target="\_blank">26961233</a>, PubMed:<a href="http://www.uniprot.org/citations/31296852" target="\_blank">31296852</a>, PubMed:<a href="http://www.uniprot.org/citations/33558980" target="\_blank">33558980</a>). CARD9 signaling in antigen-presenting cells links innate sensing of fungi to the activation of adaptive immunity and provides a cytokine milieu that induces the development and subsequent of interleukin 17-producing T helper (Th17) cells (PubMed:<a href="http://www.uniprot.org/citations/24231284" target="\_blank">24231284</a>). Also involved in activation of myeloid cells via classical ITAM-associated receptors and TLR: required for TLR-mediated activation of MAPK, while it is not required for TLR-induced activation of NF-kappa-B (By similarity). CARD9 can also be engaged independently of BCL10: forms a complex with RASGRF1 downstream of C-type lectin receptors, which recruits and activates HRAS, leading to ERK activation and the production of cytokines (By similarity). Acts as an important regulator of the intestinal commensal fungi (mycobiota) component of the gut microbiota (PubMed:<a href="http://www.uniprot.org/citations/33548172" target="\_blank">33548172</a>). Plays an essential role in antifungal immunity against dissemination of gut fungi: acts by promoting induction of antifungal IgG antibodies response in CX3CR1(+) macrophages to confer protection against disseminated C.albicans or C.auris infection (PubMed:<a href="http://www.uniprot.org/citations/33548172" target="\_blank">33548172</a>). Also mediates immunity against other pathogens, such as certain bacteria, viruses and parasites; CARD9 signaling is however redundant with other innate immune responses (By similarity). In response to L.monocytogenes infection, required for the production of inflammatory cytokines activated by intracellular peptidoglycan: acts by connecting NOD2 recognition of peptidoglycan to downstream activation of MAP kinases (MAPK) without activating NF-kappa-B (By similarity).

### Cellular Location

Cytoplasm

### Tissue Location

Expression is restricted to several populations of phagocytes, such as macrophages, monocytes, and dendritic cells (PubMed:33548172). Highly expressed in spleen (PubMed:11053425). Also detected in liver, placenta, lung, peripheral blood leukocytes and in brain (PubMed:11053425).

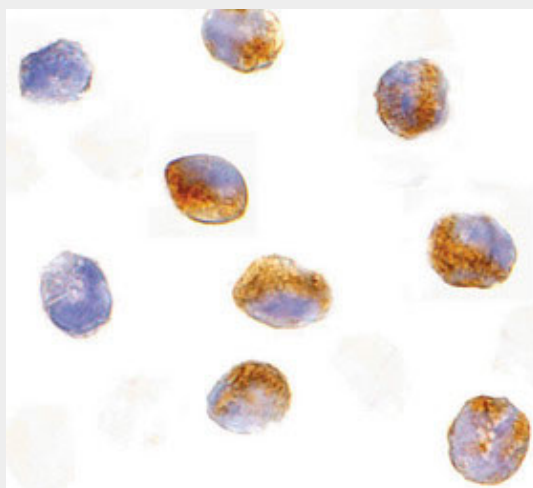
### CARD9 Antibody (aa521-536) - Protocols

Provided below are standard protocols that you may find useful for product applications.

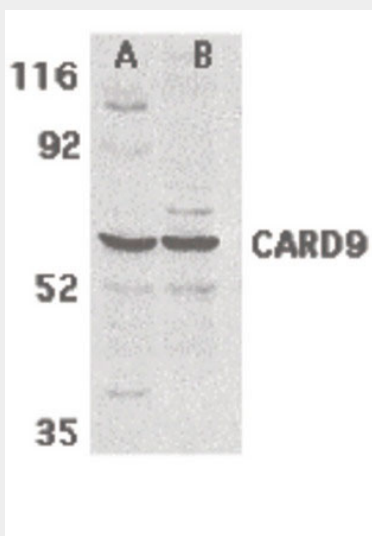
- [Western Blot](#)
- [Blocking Peptides](#)
- [Dot Blot](#)
- [Immunohistochemistry](#)

- [Immunofluorescence](#)
- [Immunoprecipitation](#)
- [Flow Cytometry](#)
- [Cell Culture](#)

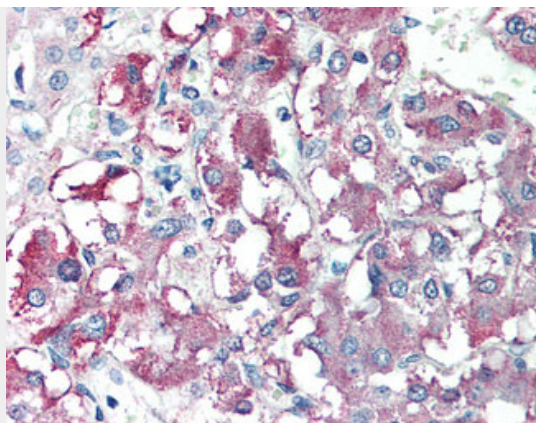
#### **CARD9 Antibody (aa521-536) - Images**



Immunocytochemistry of CARD9 in K562 cells with CARD9 antibody at 10 ug/ml.



Western blot of CARD9 expression in human MDA-MB-361 (A) and PC-3 (B) cell lysate with CARD9...



Anti-CARD9 antibody IHC of human adrenal.

### **CARD9 Antibody (aa521-536) - Background**

Adapter protein that plays a key role in innate immune response to a number of intracellular pathogens, such as *C.albicans* and *L.monocytogenes*. Is at the crossroads of ITAM- tyrosine kinase and the Toll-like receptors (TLR) and NOD2 signaling pathways. Probably controls various innate immune response pathways depending on the intracellular pathogen. In response to *L.monocytogenes* infection, acts by connecting NOD2 recognition of peptidoglycan to downstream activation of MAP kinases (MAPK) without activating NF-kappa-B. Also involved in activation of myeloid cells via classical ITAM-associated receptors and TLR: required for TLR-mediated activation of MAPK, while it is not required for TLR-induced activation of NF-kappa-B (By similarity). Controls CLEC7A (dectin-1)-mediated myeloid cell activation induced by the yeast cell wall component zymosan, leading to cytokine production and innate anti-fungal immunity: acts by regulating BCL10-MALT1-mediated NF-kappa-B activation pathway. Activates NF-kappa-B via BCL10. In response to the hyphal form of *C.albicans*, mediates CLEC6A (dectin-2)-induced I-kappa-B kinase ubiquitination, leading to NF-kappa-B activation via interaction with BCL10. In response to fungal infection, may be required for the development and subsequent differentiation of interleukin 17-producing T helper (TH-17) cells.

### **CARD9 Antibody (aa521-536) - References**

Bertin J.,et al.J. Biol. Chem. 275:41082-41086(2000).  
Ota T.,et al.Nat. Genet. 36:40-45(2004).  
Humphray S.J.,et al.Nature 429:369-374(2004).  
Mural R.J.,et al.Submitted (JUL-2005) to the EMBL/GenBank/DDBJ databases.  
Zahedi R.P.,et al.J. Proteome Res. 7:526-534(2008).