

**NLRP2 / NALP2 Antibody (C-Terminus)**  
**Rabbit Polyclonal Antibody**  
**Catalog # ALS11420****Specification**

---

**NLRP2 / NALP2 Antibody (C-Terminus) - Product Information**

Application	WB, IHC-P
Primary Accession	<a href="#">Q9NX02</a>
Reactivity	Human, Mouse, Rat
Host	Rabbit
Clonality	Polyclonal
Calculated MW	121kDa KDa
Dilution	WB~~1:1000 IHC-P~~N/A

**NLRP2 / NALP2 Antibody (C-Terminus) - Additional Information****Gene ID** 55655**Other Names**

NACHT, LRR and PYD domains-containing protein 2, Nucleotide-binding site protein 1, PYRIN domain and NACHT domain-containing protein 1, PYRIN-containing APAF1-like protein 2, NLRP2, NALP2, NBS1, PAN1, PYPAF2

**Target/Specificity**

peptide corresponding to 12 amino acids near the carboxy-terminus of human NALP2

**Reconstitution & Storage**

Short term 4°C, long term aliquot and store at -20°C, avoid freeze thaw cycles. Store undiluted.

**Precautions**

NLRP2 / NALP2 Antibody (C-Terminus) is for research use only and not for use in diagnostic or therapeutic procedures.

**NLRP2 / NALP2 Antibody (C-Terminus) - Protein Information****Name** NLRP2**Synonyms** NALP2, NBS1, PAN1, PYPAF2**Function**

Suppresses TNF- and CD40-induced NFkB1 activity at the level of the IKK complex, by inhibiting NFkBIA degradation induced by TNF. When associated with PYCARD, activates CASP1, leading to the secretion of mature pro-inflammatory cytokine IL1B. May be a component of the inflammasome, a protein complex which also includes PYCARD, CARD8 and CASP1 and whose function would be the activation of pro-inflammatory caspases.

**Cellular Location**

Cytoplasm

#### Tissue Location

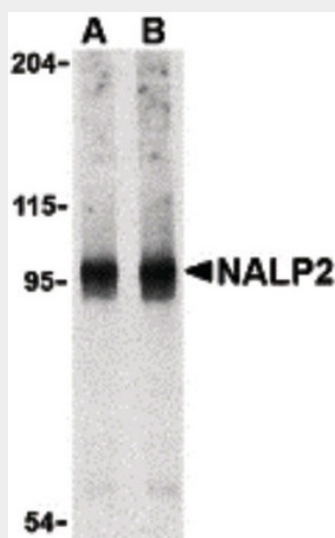
Expressed at high levels in lung, placenta and thymus and at lower levels in ovary, intestine and brain (PubMed:15456791). Highly abundant in oocytes and early embryos, however poorly expressed in somatic tissues such as brain, kidney, liver and spinal cord (PubMed:30877238).

#### NLRP2 / NALP2 Antibody (C-Terminus) - Protocols

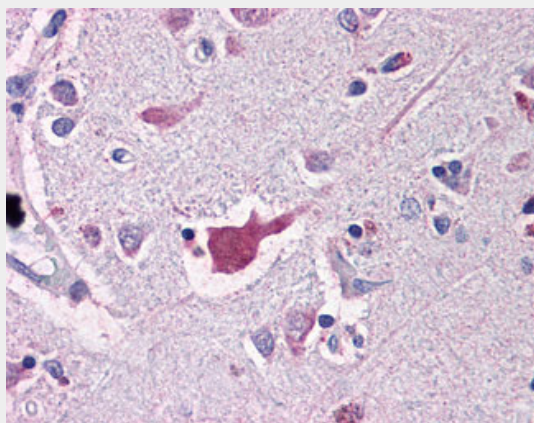
Provided below are standard protocols that you may find useful for product applications.

- [Western Blot](#)
- [Blocking Peptides](#)
- [Dot Blot](#)
- [Immunohistochemistry](#)
- [Immunofluorescence](#)
- [Immunoprecipitation](#)
- [Flow Cytometry](#)
- [Cell Culture](#)

#### NLRP2 / NALP2 Antibody (C-Terminus) - Images



Western blot of NALP2 in PC-3 cell lysate with NALP2 antibody at (A) 1 and (B) 2 ug/ml.



Anti-NALP2 antibody IHC of human brain, cortex.

#### **NLRP2 / NALP2 Antibody (C-Terminus) - Background**

Suppresses TNF- and CD40-induced NFkB1 activity at the level of the IKK complex, by inhibiting NFkBIA degradation induced by TNF. When associated with PYCARD, activates CASP1, leading to the secretion of mature proinflammatory cytokine IL1B. May be a component of the inflammasome, a protein complex which also includes PYCARD, CARD8 and CASP1 and whose function would be the activation of proinflammatory caspases.

#### **NLRP2 / NALP2 Antibody (C-Terminus) - References**

Bertin J.,et al.Cell Death Differ. 7:1273-1274(2000).  
Martinon F.,et al.Curr. Biol. 11:R118-R120(2001).  
Wang L.,et al.J. Biol. Chem. 277:29874-29880(2002).  
Ota T.,et al.Nat. Genet. 36:40-45(2004).  
Suzuki Y.,et al.Submitted (APR-2005) to the EMBL/GenBank/DDBJ databases.