

IPAF / NLRC4 Antibody (C-Terminus)
Rabbit Polyclonal Antibody
Catalog # ALS11424**Specification**

IPAF / NLRC4 Antibody (C-Terminus) - Product Information

Application	WB, IHC-P, IF, ICC
Primary Accession	Q9NPP4
Reactivity	Human
Host	Rabbit
Clonality	Polyclonal
Calculated MW	116kDa KDa
Dilution	WB~~1:1000 IHC-P~~N/A IF~~1:50~200 ICC~~N/A

IPAF / NLRC4 Antibody (C-Terminus) - Additional Information**Gene ID** 58484**Other Names**

NLR family CARD domain-containing protein 4, CARD, LRR, and NACHT-containing protein, Clan protein, Caspase recruitment domain-containing protein 12, Ice protease-activating factor, Ipaf, NLRC4, CARD12, CLAN, CLAN1, IPAF

Target/Specificity

synthetic peptide corresponding to amino acids near the C-terminus of human Ipaf

Reconstitution & Storage

Short term 4°C, long term aliquot and store at -20°C, avoid freeze thaw cycles. Store undiluted.

Precautions

IPAF / NLRC4 Antibody (C-Terminus) is for research use only and not for use in diagnostic or therapeutic procedures.

IPAF / NLRC4 Antibody (C-Terminus) - Protein Information**Name** NLRC4**Function**

Key component of inflammasomes that indirectly senses specific proteins from pathogenic bacteria and fungi and responds by assembling an inflammasome complex that promotes caspase-1 activation, cytokine production and macrophage pyroptosis (PubMed:15107016). The NLRC4 inflammasome is activated as part of the innate immune response to a range of intracellular bacteria (By similarity).

Cellular Location

Cytoplasm. Cytoplasm, cytosol {ECO:0000250|UniProtKB:Q3UP24}. Inflammasome

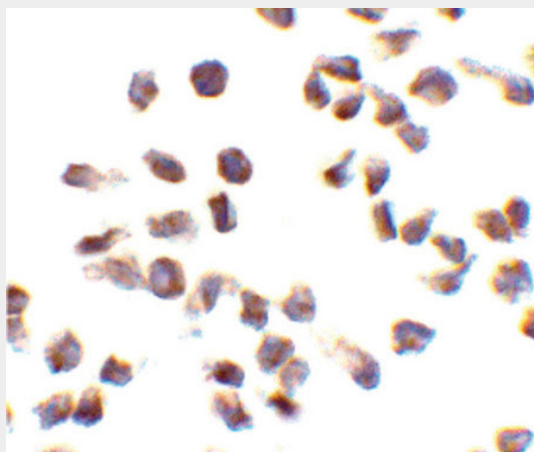
Tissue Location

Isoform 2 is expressed ubiquitously, although highly expressed in lung and spleen. Isoform 1 is highly expressed in lung, followed by leukocytes especially monocytes, lymph node, colon, brain, prostate, placenta, spleen, bone marrow and fetal liver. Isoform 4 is only detected in brain

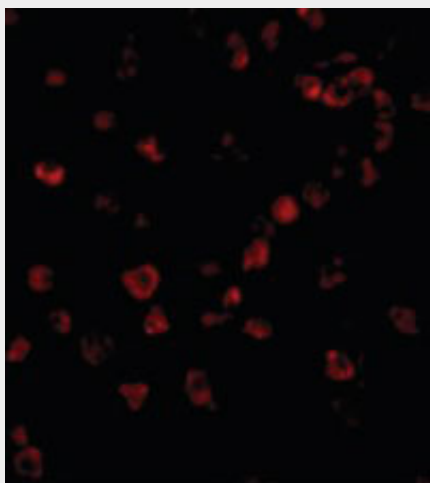
IPAF / NLRC4 Antibody (C-Terminus) - Protocols

Provided below are standard protocols that you may find useful for product applications.

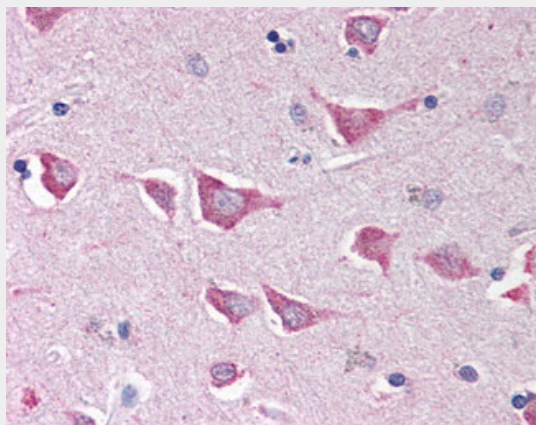
- [Western Blot](#)
- [Blocking Peptides](#)
- [Dot Blot](#)
- [Immunohistochemistry](#)
- [Immunofluorescence](#)
- [Immunoprecipitation](#)
- [Flow Cytometry](#)
- [Cell Culture](#)

IPAF / NLRC4 Antibody (C-Terminus) - Images

Immunocytochemistry of Ipaf in THP-1 cells with Ipaf antibody at 10 ug/ml.



Immunofluorescence of Ipaf in THP1 cells with Ipaf antibody at 10 ug/ml.



Anti-NLRC4 antibody IHC of human brain, cortex.

IPAF / NLRC4 Antibody (C-Terminus) - Background

Key component of inflammasomes that indirectly senses specific proteins from pathogenic bacteria and fungi and responds by assembling an inflammasome complex that promotes caspase-1 activation, cytokine production and macrophage pyroptosis.

IPAF / NLRC4 Antibody (C-Terminus) - References

Geddes B.J.,et al.Biochem. Biophys. Res. Commun. 284:77-82(2001).
Damiano J.S.,et al.Genomics 75:77-83(2001).
Poyet J.-L.,et al.J. Biol. Chem. 276:28309-28313(2001).
Gingras M.,et al.Submitted (MAY-2001) to the EMBL/GenBank/DDBJ databases.
Clark H.F.,et al.Genome Res. 13:2265-2270(2003).