

RPAIN Antibody (C-Terminus)
Rabbit Polyclonal Antibody
Catalog # ALS11435**Specification**

RPAIN Antibody (C-Terminus) - Product Information

Application	WB, IHC
Primary Accession	Q86UA6
Reactivity	Human, Mouse, Rat
Host	Rabbit
Clonality	Polyclonal
Calculated MW	25kDa KDa

RPAIN Antibody (C-Terminus) - Additional Information**Gene ID** 84268**Other Names**

RPA-interacting protein, hRIP, RPAIN, RIP

Target/Specificity

17 amino acid peptide from near the carboxy terminus of human RPA IP.

Reconstitution & Storage

Short term 4°C, long term aliquot and store at -20°C, avoid freeze thaw cycles. Store undiluted.

Precautions

RPAIN Antibody (C-Terminus) is for research use only and not for use in diagnostic or therapeutic procedures.

RPAIN Antibody (C-Terminus) - Protein Information**Name** RPAIN**Synonyms** RIP**Function**

Mediates the import of RPA complex into the nucleus, possibly via some interaction with importin beta. Isoform 2 is sumoylated and mediates the localization of RPA complex into the PML body of the nucleus, thereby participating in RPA function in DNA metabolism.

Cellular Location

[Isoform 1]: Cytoplasm. Nucleus.

Tissue Location

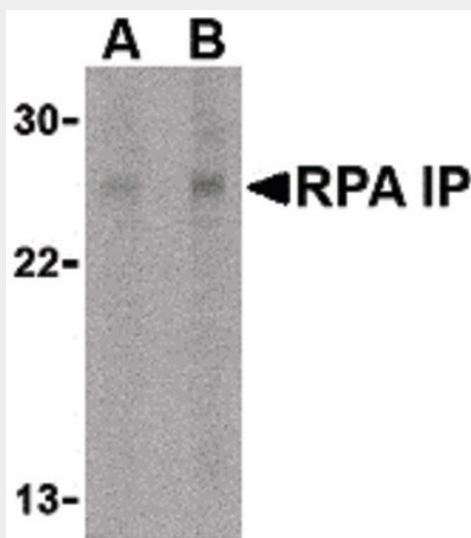
Widely expressed. Expressed in pancreas, kidney, muscle, liver, lung, placenta, brain, heart, leukocytes, colon, intestine, ovary, testis, prostate, thymus and spleen

RPAIN Antibody (C-Terminus) - Protocols

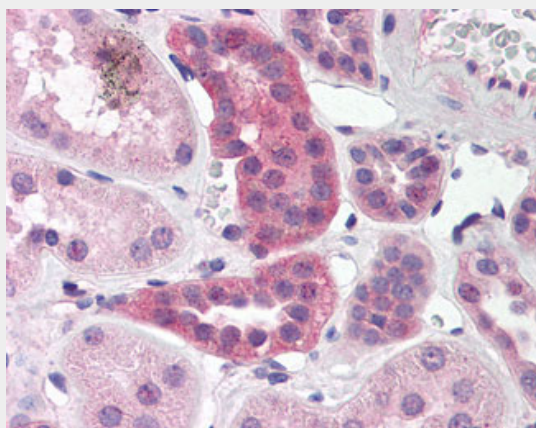
Provided below are standard protocols that you may find useful for product applications.

- [Western Blot](#)
- [Blocking Peptides](#)
- [Dot Blot](#)
- [Immunohistochemistry](#)
- [Immunofluorescence](#)
- [Immunoprecipitation](#)
- [Flow Cytometry](#)
- [Cell Culture](#)

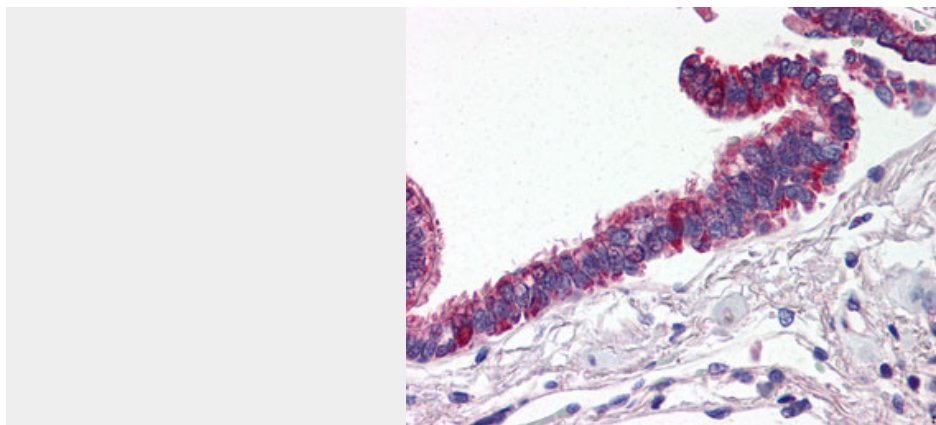
RPAIN Antibody (C-Terminus) - Images



Western blot of RPA Interacting Protein in Jurkat cell lysate with RPA Interacting Protein...



Anti-RPAIN antibody IHC of human kidney.



Anti-RPAIN antibody IHC of human lung, respiratory epithelium.

RPAIN Antibody (C-Terminus) - Background

Mediates the import of RPA complex into the nucleus, possibly via some interaction with importin beta. Isoform 2 is sumoylated and mediates the localization of RPA complex into the PML body of the nucleus, thereby participating in RPA function in DNA metabolism.

RPAIN Antibody (C-Terminus) - References

- Chen J.-Z., et al. DNA Cell Biol. 24:464-469(2005).
- Park J., et al. Mol. Cell. Biol. 25:8202-8214(2005).
- Ota T., et al. Nat. Genet. 36:40-45(2004).
- Zody M.C., et al. Nature 440:1045-1049(2006).
- Gauci S., et al. Anal. Chem. 81:4493-4501(2009).