

RRM2B Antibody (aa2-17)
Rabbit Polyclonal Antibody
Catalog # ALS11436**Specification**

RRM2B Antibody (aa2-17) - Product Information

| | |
|-------------------|------------------------|
| Application | IF, IHC |
| Primary Accession | Q7LG56 |
| Reactivity | Human |
| Host | Rabbit |
| Clonality | Polyclonal |
| Calculated MW | 41kDa KDa |

RRM2B Antibody (aa2-17) - Additional Information**Gene ID** 50484**Other Names**

Ribonucleoside-diphosphate reductase subunit M2 B, 1.17.4.1, TP53-inducible ribonucleotide reductase M2 B, p53-inducible ribonucleotide reductase small subunit 2-like protein, p53R2, RRM2B, P53R2

Target/Specificity

synthetic peptide (GDPERPEAAGLDQDER) corresponding to amino acids 2 to 17 of human p53R2

Reconstitution & Storage

Short term 4°C, long term aliquot and store at -20°C, avoid freeze thaw cycles. Store undiluted.

Precautions

RRM2B Antibody (aa2-17) is for research use only and not for use in diagnostic or therapeutic procedures.

RRM2B Antibody (aa2-17) - Protein Information**Name** RRM2B**Synonyms** P53R2**Function**

Plays a pivotal role in cell survival by repairing damaged DNA in a p53/TP53-dependent manner. Supplies deoxyribonucleotides for DNA repair in cells arrested at G1 or G2. Contains an iron-tyrosyl free radical center required for catalysis. Forms an active ribonucleotide reductase (RNR) complex with RRM1 which is expressed both in resting and proliferating cells in response to DNA damage.

Cellular Location

Cytoplasm. Nucleus. Note=Translocates from cytoplasm to nucleus in response to DNA damage

Tissue Location

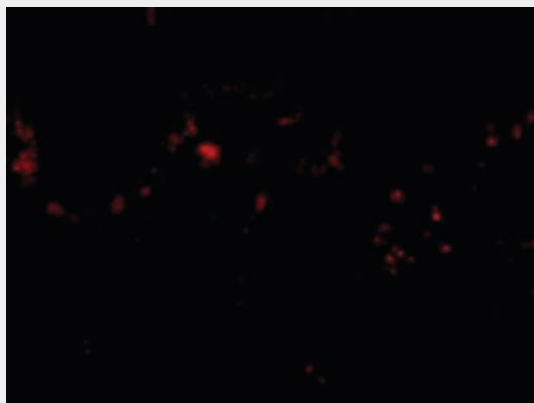
Widely expressed at a high level in skeletal muscle and at a weak level in thymus. Expressed in epithelial dysplasias and squamous cell carcinoma.

RRM2B Antibody (aa2-17) - Protocols

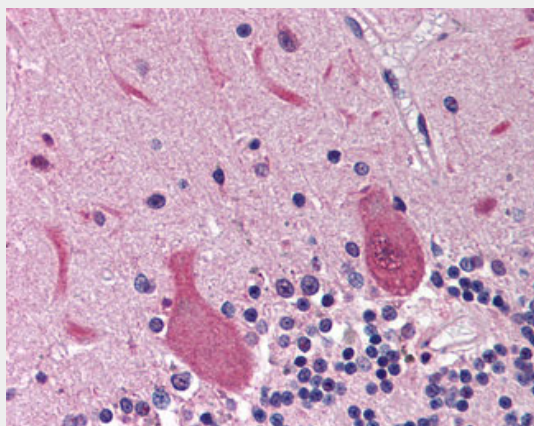
Provided below are standard protocols that you may find useful for product applications.

- [Western Blot](#)
- [Blocking Peptides](#)
- [Dot Blot](#)
- [Immunohistochemistry](#)
- [Immunofluorescence](#)
- [Immunoprecipitation](#)
- [Flow Cytometry](#)
- [Cell Culture](#)

RRM2B Antibody (aa2-17) - Images



Immunofluorescence of p53R2 in Human Lung cells with p53R2 antibody at 20 ug/ml.



Anti-RRM2B / p53R2 antibody IHC of human brain, cerebellum.

RRM2B Antibody (aa2-17) - Background

Plays a pivotal role in cell survival by repairing damaged DNA in a p53/TP53-dependent manner. Supplies deoxyribonucleotides for DNA repair in cells arrested at G1 or G2. Contains an iron-tyrosyl free radical center required for catalysis. Forms an active ribonucleotide reductase (RNR) complex with RRM1 which is expressed both in resting and proliferating cells in response to DNA damage.

RRM2B Antibody (aa2-17) - References

Tanaka H.,et al.Nature 404:42-49(2000).
Ugai H.,et al.Submitted (MAR-2004) to the EMBL/GenBank/DDBJ databases.
Ota T.,et al.Nat. Genet. 36:40-45(2004).
Bechtel S.,et al.BMC Genomics 8:399-399(2007).
Nusbaum C.,et al.Nature 439:331-335(2006).