

IL27RA / WSX-1 Antibody (aa44-59)
Rabbit Polyclonal Antibody
Catalog # ALS11464**Specification**

IL27RA / WSX-1 Antibody (aa44-59) - Product Information

Application	WB, IHC-P, IF
Primary Accession	Q6UWB1
Reactivity	Human
Host	Rabbit
Clonality	Polyclonal
Calculated MW	69kDa KDa
Dilution	WB~~1:1000 IHC-P~~N/A IF~~1:50~200

IL27RA / WSX-1 Antibody (aa44-59) - Additional Information**Gene ID** 9466**Other Names**

Interleukin-27 receptor subunit alpha, IL-27 receptor subunit alpha, IL-27R subunit alpha, IL-27R-alpha, IL-27RA, Cytokine receptor WSX-1, Cytokine receptor-like 1, Type I T-cell cytokine receptor, TCCR, ZcytoR1, IL27RA, CRL1, TCCR, WSX1

Target/Specificity

Synthetic peptide (gsagplqcygvgplgd) corresponding to amino acids 44 to 59 of human TCCR precursor.

Reconstitution & Storage

Short term 4°C, long term aliquot and store at -20°C, avoid freeze thaw cycles. Store undiluted.

Precautions

IL27RA / WSX-1 Antibody (aa44-59) is for research use only and not for use in diagnostic or therapeutic procedures.

IL27RA / WSX-1 Antibody (aa44-59) - Protein Information**Name** IL27RA**Synonyms** CRL1, TCCR, WSX1**Function**

Receptor for IL27. Requires IL6ST/GP130 to mediate signal transduction in response to IL27. This signaling system acts through STAT3 and STAT1. Acts as a receptor for the neuroprotective peptide humanin as part of a complex with IL6ST/GP130 and CNTFR ([PubMed:19386761](http://www.uniprot.org/citations/19386761)). Involved in the regulation of Th1-type immune responses. Also appears to be involved in innate defense

mechanisms.

Cellular Location

Membrane; Single-pass type I membrane protein.

Tissue Location

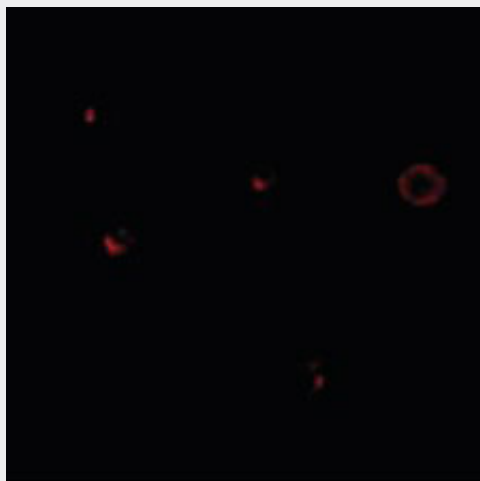
Highly expressed in lymphoid tissues such as spleen, lymph nodes and peripheral blood leukocytes. Weakly expressed in other tissues examined including heart, brain, fetal and adult lung, liver, skeletal muscle, kidney, pancreas, prostate, testis, ovary, small intestine, kidney and colon. In the lymphoid system, higher level expression in CD4+ T-cell subsets than in CD8+ T-cell subsets. Also weaker expression in CD19+ B-cells and monocytes

IL27RA / WSX-1 Antibody (aa44-59) - Protocols

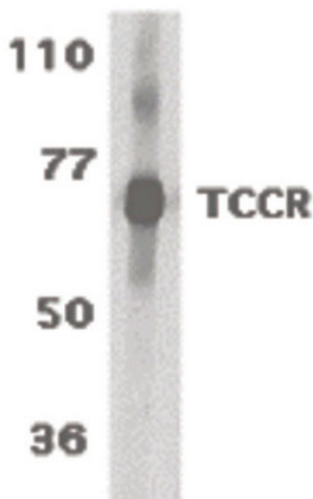
Provided below are standard protocols that you may find useful for product applications.

- [Western Blot](#)
- [Blocking Peptides](#)
- [Dot Blot](#)
- [Immunohistochemistry](#)
- [Immunofluorescence](#)
- [Immunoprecipitation](#)
- [Flow Cytometry](#)
- [Cell Culture](#)

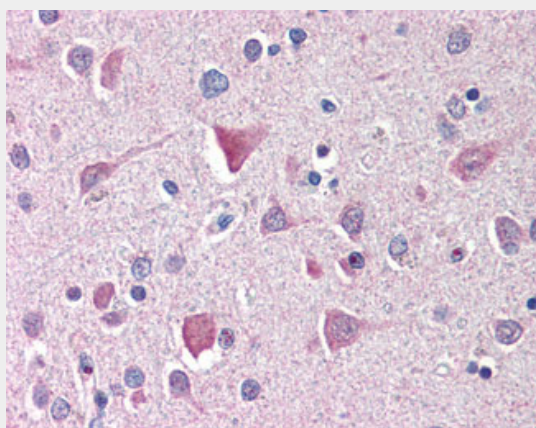
IL27RA / WSX-1 Antibody (aa44-59) - Images



Immunofluorescence of TCCR in A549 cells with TCCR antibody at 20 ug/ml.



Western blot of TCCR expression in human spleen tissue lysates with TCCR antibody at 1 ug /ml.



Anti-IL27RA antibody IHC of human brain, cortex.

IL27RA / WSX-1 Antibody (aa44-59) - Background

Receptor for IL27. Requires IL6ST/gp130 to mediate signal transduction in response to IL27. This signaling system acts through STAT3 and STAT1. Involved in the regulation of Th1- type immune responses. Also appears to be involved in innate defense mechanisms.

IL27RA / WSX-1 Antibody (aa44-59) - References

Sprecher C.A.,et al.Biochem. Biophys. Res. Commun. 246:82-90(1998).
Zhang W.,et al.Submitted (NOV-1998) to the EMBL/GenBank/DDBJ databases.
Chen Q.,et al.Nature 407:916-920(2000).
Livingston R.J.,et al.Submitted (OCT-2006) to the EMBL/GenBank/DDBJ databases.
Clark H.F.,et al.Genome Res. 13:2265-2270(2003).