

IL32 Antibody (C-Terminus)
Rabbit Polyclonal Antibody
Catalog # ALS11466**Specification**

IL32 Antibody (C-Terminus) - Product Information

Application	IF, IHC
Primary Accession	P24001
Reactivity	Human, Mouse
Host	Rabbit
Clonality	Polyclonal
Calculated MW	27kDa KDa

IL32 Antibody (C-Terminus) - Additional Information**Gene ID** 9235**Other Names**

Interleukin-32, IL-32, Natural killer cells protein 4, Tumor necrosis factor alpha-inducing factor, IL32, NK4, TAIF

Target/Specificity

15 amino acid peptide from near the carboxy terminus of human IL-32

Reconstitution & Storage

Short term 4°C, long term aliquot and store at -20°C, avoid freeze thaw cycles. Store undiluted.

Precautions

IL32 Antibody (C-Terminus) is for research use only and not for use in diagnostic or therapeutic procedures.

IL32 Antibody (C-Terminus) - Protein Information**Name** IL32**Synonyms** NK4, TAIF**Function**

Cytokine that may play a role in innate and adaptive immune responses. It induces various cytokines such as TNFA/TNF-alpha and IL8. It activates typical cytokine signal pathways of NF-kappa-B and p38 MAPK.

Cellular Location

Secreted.

Tissue Location

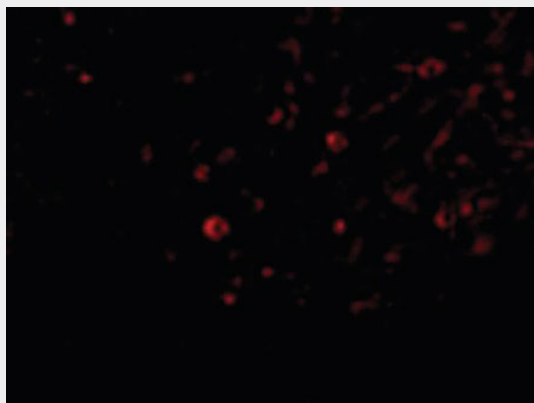
Selectively expressed in lymphocytes. Expression is more prominent in immune cells than in non-immune cells

IL32 Antibody (C-Terminus) - Protocols

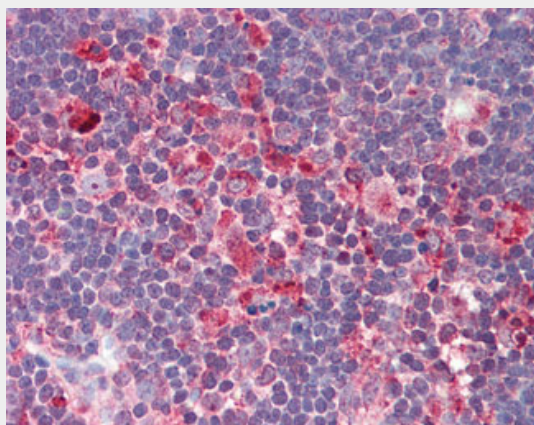
Provided below are standard protocols that you may find useful for product applications.

- [Western Blot](#)
- [Blocking Peptides](#)
- [Dot Blot](#)
- [Immunohistochemistry](#)
- [Immunofluorescence](#)
- [Immunoprecipitation](#)
- [Flow Cytometry](#)
- [Cell Culture](#)

IL32 Antibody (C-Terminus) - Images



Immunofluorescence of IL-32 in Human Spleen cells with IL-32 antibody at 20 ug/ml.



Anti-IL-32 antibody IHC of human thymus.

IL32 Antibody (C-Terminus) - Background

Cytokine that may play a role in innate and adaptive immune responses. It induces various cytokines such as TNFA/TNF- alpha and IL8. It activates typical cytokine signal pathways of NF-kappa-B and p38 MAPK.

IL32 Antibody (C-Terminus) - References

Dahl C.A., et al.J. Immunol. 148:597-603(1992).

Kim S.-H., et al. *Immunity* 22:131-142(2005).

Mao W., et al. Submitted (DEC-2007) to the EMBL/GenBank/DDBJ databases.

Ota T., et al. *Nat. Genet.* 36:40-45(2004).

Oh J.H., et al. *Mamm. Genome* 16:942-954(2005).