

TANK Antibody (C-Terminus)
Rabbit Polyclonal Antibody
Catalog # ALS11485**Specification**

TANK Antibody (C-Terminus) - Product Information

Application	IF, WB, IHC
Primary Accession	O92844
Reactivity	Human, Mouse, Rat
Host	Rabbit
Clonality	Polyclonal
Calculated MW	48kDa KDa

TANK Antibody (C-Terminus) - Additional Information**Gene ID** 10010**Other Names**

TRAF family member-associated NF-kappa-B activator, TRAF-interacting protein, I-TRAF, TANK, ITRAF, TRAF2

Target/Specificity

14 amino acid peptide from near the carboxy terminus of human TANK

Reconstitution & Storage

Short term 4°C, long term aliquot and store at -20°C, avoid freeze thaw cycles. Store undiluted.

Precautions

TANK Antibody (C-Terminus) is for research use only and not for use in diagnostic or therapeutic procedures.

TANK Antibody (C-Terminus) - Protein Information**Name** TANK**Synonyms** ITRAF, TRAF2**Function**

Adapter protein involved in I-kappa-B-kinase (IKK) regulation which constitutively binds TBK1 and IKBKE playing a role in antiviral innate immunity. Acts as a regulator of TRAF function by maintaining them in a latent state. Blocks TRAF2 binding to LMP1 and inhibits LMP1- mediated NF-kappa-B activation. Negatively regulates NF-kappaB signaling and cell survival upon DNA damage (PubMed:25861989). Plays a role as an adapter to assemble ZC3H12A, USP10 in a deubiquitination complex which plays a negative feedback response to attenuate NF-kappaB activation through the deubiquitination of IKBKG or TRAF6 in response to interleukin-1-beta (IL1B) stimulation or upon DNA damage (PubMed:25861989). Promotes UBP10-induced deubiquitination of TRAF6 in response

to DNA damage (PubMed:25861989). May control negatively TRAF2- mediated NF-kappa-B activation signaled by CD40, TNFR1 and TNFR2.

Cellular Location

Cytoplasm.

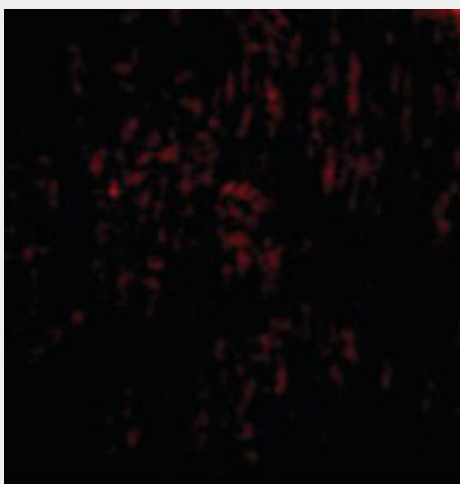
Tissue Location

Ubiquitous.

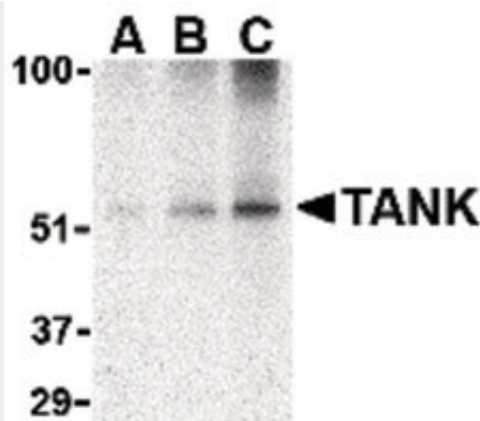
TANK Antibody (C-Terminus) - Protocols

Provided below are standard protocols that you may find useful for product applications.

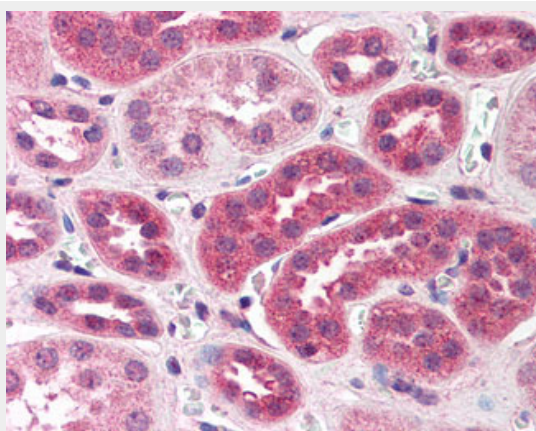
- [Western Blot](#)
- [Blocking Peptides](#)
- [Dot Blot](#)
- [Immunohistochemistry](#)
- [Immunofluorescence](#)
- [Immunoprecipitation](#)
- [Flow Cytometry](#)
- [Cell Culture](#)

TANK Antibody (C-Terminus) - Images

Immunofluorescence of TANK in Rat Spleen cells with TANK antibody at 20 ug/ml.



Western blot of TANK in Daudi cell lysate with TANK antibody at (A) 0.5, (B) 1 and (C) 2 ug/ml.



Anti-TANK antibody IHC of human kidney.

TANK Antibody (C-Terminus) - Background

Adapter protein involved in I-kappa-B-kinase (IKK) regulation which constitutively binds TBK1 and IKKε playing a role in antiviral innate immunity. Acts as a regulator of TRAF function by maintaining them in a latent state. Blocks TRAF2 binding to LMP1 and inhibits LMP1-mediated NF-kappa-B activation. May control negatively TRAF2-mediated NF-kappa-B activation signaled by CD40, TNFR1 and TNFR2.

TANK Antibody (C-Terminus) - References

- Rothe M.,et al.Proc. Natl. Acad. Sci. U.S.A. 93:8241-8246(1996).
- Kaye K.M.,et al.Proc. Natl. Acad. Sci. U.S.A. 93:11085-11090(1996).
- Kalnina N.,et al.Submitted (AUG-2003) to the EMBL/GenBank/DDBJ databases.
- Hillier L.W.,et al.Nature 434:724-731(2005).
- Mural R.J.,et al.Submitted (SEP-2005) to the EMBL/GenBank/DDBJ databases.