

TIMD4 / TIM4 / TIM-4 Antibody (C-Terminus)
Rabbit Polyclonal Antibody
Catalog # ALS11488**Specification**

TIMD4 / TIM4 / TIM-4 Antibody (C-Terminus) - Product Information

Application	WB, IHC-P
Primary Accession	Q96H15
Reactivity	Human, Mouse, Rat
Host	Rabbit
Clonality	Polyclonal
Calculated MW	42kDa KDa
Dilution	WB~~1:1000 IHC-P~~N/A

TIMD4 / TIM4 / TIM-4 Antibody (C-Terminus) - Additional Information**Gene ID** 91937**Other Names**

T-cell immunoglobulin and mucin domain-containing protein 4, TIMD-4, T-cell immunoglobulin mucin receptor 4, TIM-4, T-cell membrane protein 4, TIMD4, TIM4

Target/Specificity

15 amino acid peptide from near the carboxy terminus of human TIM-4

Reconstitution & Storage

Short term 4°C, long term aliquot and store at -20°C, avoid freeze thaw cycles. Store undiluted.

Precautions

TIMD4 / TIM4 / TIM-4 Antibody (C-Terminus) is for research use only and not for use in diagnostic or therapeutic procedures.

TIMD4 / TIM4 / TIM-4 Antibody (C-Terminus) - Protein Information**Name** TIMD4**Synonyms** TIM4**Function**

Phosphatidylserine receptor that plays different role in immune response including phagocytosis of apoptotic cells and T-cell regulation. Controls T-cell activation in a bimodal fashion, decreasing the activation of naive T-cells by inducing cell cycle arrest, while increasing proliferation of activated T-cells by activating AKT1 and ERK1/2 phosphorylations and subsequent signaling pathways (By similarity). Also plays a role in efferocytosis which is the process by which apoptotic cells are removed by phagocytic cells (PubMed:32703939, PubMed:34067457). Mechanistically, promotes the engulfment of apoptotic cells or

exogenous particles by securing them to phagocytes through direct binding to phosphatidylserine present on apoptotic cells, while other engulfment receptors such as MERTK efficiently recognize apoptotic cells and mediate their ingestion (PubMed:32640697). Additionally, promotes autophagy process by suppressing NLRP3 inflammasome activity via activation of LKB1/PRKAA1 pathway in a phosphatidylserine-dependent mechanism (By similarity).

Cellular Location

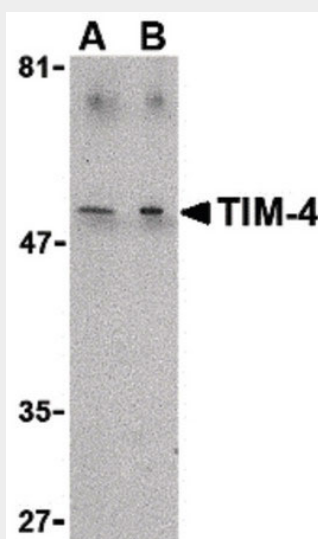
Cell membrane; Single-pass type I membrane protein. Secreted, extracellular exosome

TIMD4 / TIM4 / TIM-4 Antibody (C-Terminus) - Protocols

Provided below are standard protocols that you may find useful for product applications.

- [Western Blot](#)
- [Blocking Peptides](#)
- [Dot Blot](#)
- [Immunohistochemistry](#)
- [Immunofluorescence](#)
- [Immunoprecipitation](#)
- [Flow Cytometry](#)
- [Cell Culture](#)

TIMD4 / TIM4 / TIM-4 Antibody (C-Terminus) - Images



Western blot of TIM-4 in Jurkat lysate with TIM-4 antibody at (A) 1 and (B) 2 ug/ml.

TIMD4 / TIM4 / TIM-4 Antibody (C-Terminus) - Background

Phosphatidylserine receptor that enhances the engulfment of apoptotic cells. Involved in regulating T-cell proliferation and lymphotoxin signaling. Ligand for HAVCR1/TIMD1 (By similarity).

TIMD4 / TIM4 / TIM-4 Antibody (C-Terminus) - References

Ota T.,et al.Nat. Genet. 36:40-45(2004).
Schmutz J.,et al.Nature 431:268-274(2004).