

**TLR5 Antibody (Internal)**  
**Rabbit Polyclonal Antibody**  
**Catalog # ALS11491****Specification**

---

**TLR5 Antibody (Internal) - Product Information**

Application	WB, IHC-P
Primary Accession	<a href="#">O60602</a>
Reactivity	Human, Mouse, Rat
Host	Rabbit
Clonality	Polyclonal
Calculated MW	98kDa KDa
Dilution	WB~~1:1000 IHC-P~~N/A

**TLR5 Antibody (Internal) - Additional Information****Gene ID** 7100**Other Names**

Toll-like receptor 5, Toll/interleukin-1 receptor-like protein 3, TLR5, TIL3

**Target/Specificity**

peptide corresponding to 16 amino acids near the center of human TLR5

**Reconstitution & Storage**

Short term 4°C, long term aliquot and store at -20°C, avoid freeze thaw cycles. Store undiluted.

**Precautions**

TLR5 Antibody (Internal) is for research use only and not for use in diagnostic or therapeutic procedures.

**TLR5 Antibody (Internal) - Protein Information****Name** TLR5**Synonyms** TIL3**Function**

Pattern recognition receptor (PRR) located on the cell surface that participates in the activation of innate immunity and inflammatory response (PubMed: [11323673](http://www.uniprot.org/citations/11323673), PubMed: [18490781](http://www.uniprot.org/citations/18490781)). Recognizes small molecular motifs named pathogen-associated molecular pattern (PAMPs) expressed by pathogens and microbe-associated molecular patterns (MAMPs) usually expressed by resident microbiota (PubMed: [29934223](http://www.uniprot.org/citations/29934223)). Upon ligand binding such as bacterial flagellins, recruits intracellular adapter proteins MYD88 and TRIF leading to NF- kappa-B activation, cytokine

secretion and induction of the inflammatory response (PubMed:<a href="http://www.uniprot.org/citations/11489966" target="\_blank">11489966</a>, PubMed:<a href="http://www.uniprot.org/citations/20855887" target="\_blank">20855887</a>). Plays thereby an important role in the relationship between the intestinal epithelium and enteric microbes and contributes to the gut microbiota composition throughout life (By similarity).

#### Cellular Location

Cell membrane; Single-pass type I membrane protein

#### Tissue Location

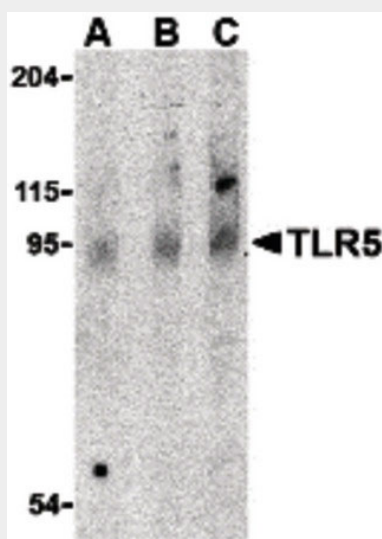
Highly expressed on the basolateral surface of intestinal epithelia (PubMed:11489966). Expressed also in other cells such as lung epithelial cells (PubMed:11489966, PubMed:18490781)

### TLR5 Antibody (Internal) - Protocols

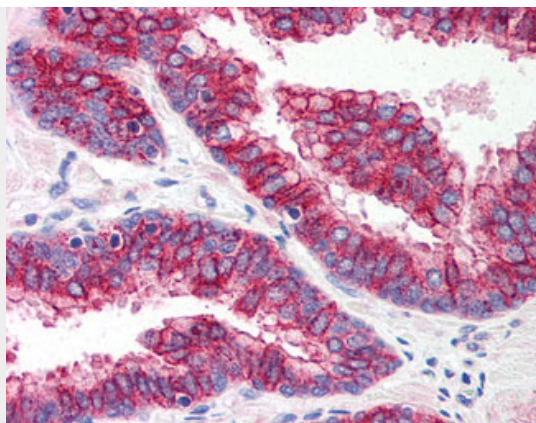
Provided below are standard protocols that you may find useful for product applications.

- [Western Blot](#)
- [Blocking Peptides](#)
- [Dot Blot](#)
- [Immunohistochemistry](#)
- [Immunofluorescence](#)
- [Immunoprecipitation](#)
- [Flow Cytometry](#)
- [Cell Culture](#)

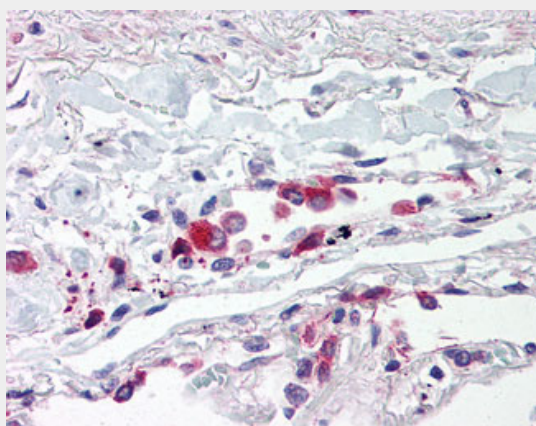
### TLR5 Antibody (Internal) - Images



Western blot of TLR5 in rat brain cell lysate with TLR5 antibody at (A) 0.5, (B) 1 and (C) 2 ug/ml.



Anti-TLR5 antibody IHC of human prostate.



Anti-TLR5 antibody IHC of human lung, alveolar macrophages.

#### **TLR5 Antibody (Internal) - Background**

Participates in the innate immune response to microbial agents. Mediates detection of bacterial flagellins. Acts via MYD88 and TRAF6, leading to NF-kappa-B activation, cytokine secretion and the inflammatory response.

#### **TLR5 Antibody (Internal) - References**

Chaudhary P.M.,et al.Blood 91:4020-4027(1998).  
Seya T.,et al.Submitted (APR-2001) to the EMBL/GenBank/DDBJ databases.  
Nakajima T.,et al.Immunogenetics 60:727-735(2008).  
Wlasiuk G.,et al.Mol. Biol. Evol. 26:937-949(2009).  
Georgel P.,et al.PLoS ONE 4:E7803-E7803(2009).