

TLR6 Antibody (Internal)
Rabbit Polyclonal Antibody
Catalog # ALS11492**Specification**

TLR6 Antibody (Internal) - Product Information

Application	ICC, WB, IHC
Primary Accession	O9Y2C9
Reactivity	Human
Host	Rabbit
Clonality	Polyclonal
Calculated MW	92kDa KDa

TLR6 Antibody (Internal) - Additional Information**Gene ID** 10333**Other Names**

Toll-like receptor 6, CD286, TLR6

Target/Specificity

peptide corresponding to 13 amino acids near the center of human TLR6

Reconstitution & Storage

Short term 4°C, long term aliquot and store at -20°C, avoid freeze thaw cycles. Store undiluted.

Precautions

TLR6 Antibody (Internal) is for research use only and not for use in diagnostic or therapeutic procedures.

TLR6 Antibody (Internal) - Protein Information**Name** TLR6**Function**

Participates in the innate immune response to Gram-positive bacteria and fungi. Specifically recognizes diacylated and, to a lesser extent, triacylated lipopeptides (PubMed:20037584). In response to diacylated lipopeptides, forms the activation cluster TLR2:TLR6:CD14:CD36, this cluster triggers signaling from the cell surface and subsequently is targeted to the Golgi in a lipid-raft dependent pathway (PubMed:16880211). Acts via MYD88 and TRAF6, leading to NF-kappa-B activation, cytokine secretion and the inflammatory response. Recognizes mycoplasmal macrophage-activating lipopeptide-2kD (MALP-2), soluble tuberculosis factor (STF), phenol-soluble modulin (PSM) and B.burgdorferi outer surface protein A lipoprotein (OspA-L) cooperatively with TLR2 (PubMed:11441107). In complex with TLR4, promotes sterile inflammation in monocytes/macrophages in response to oxidized low-density lipoprotein (oxLDL) or amyloid-beta

42. In this context, the initial signal is provided by oxLDL- or amyloid-beta 42- binding to CD36. This event induces the formation of a heterodimer of TLR4 and TLR6, which is rapidly internalized and triggers inflammatory response, leading to the NF-kappa-B-dependent production of CXCL1, CXCL2 and CCL9 cytokines, via MYD88 signaling pathway, and CCL5 cytokine, via TICAM1 signaling pathway, as well as IL1B secretion (PubMed:11441107, PubMed:20037584).

Cellular Location

Cell membrane; Single-pass type I membrane protein. Cytoplasmic vesicle, phagosome membrane {ECO:0000250|UniProtKB:Q9EPW9}; Single-pass type I membrane protein. Membrane raft. Golgi apparatus. Note=Upon complex formation with CD36 and TLR4, internalized through dynamin-dependent endocytosis. Does not reside in lipid rafts before stimulation but accumulates increasingly in the raft upon the presence of the microbial ligand. In response to diacylated lipoproteins, TLR2:TLR6 heterodimers are recruited in lipid rafts, this recruitment determine the intracellular targeting to the Golgi apparatus (PubMed:16880211).

Tissue Location

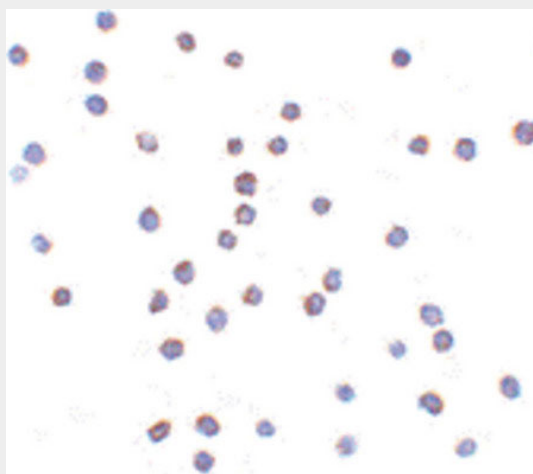
Detected in monocytes, CD11c+ immature dendritic cells, plasmacytoid pre-dendritic cells and dermal microvessel endothelial cells

TLR6 Antibody (Internal) - Protocols

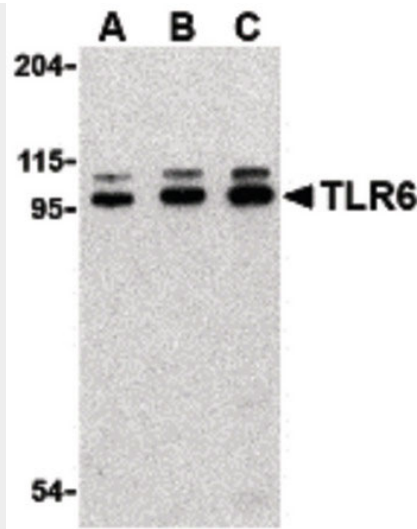
Provided below are standard protocols that you may find useful for product applications.

- [Western Blot](#)
- [Blocking Peptides](#)
- [Dot Blot](#)
- [Immunohistochemistry](#)
- [Immunofluorescence](#)
- [Immunoprecipitation](#)
- [Flow Cytometry](#)
- [Cell Culture](#)

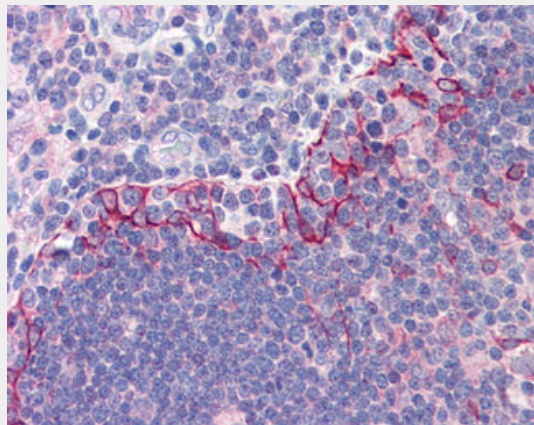
TLR6 Antibody (Internal) - Images



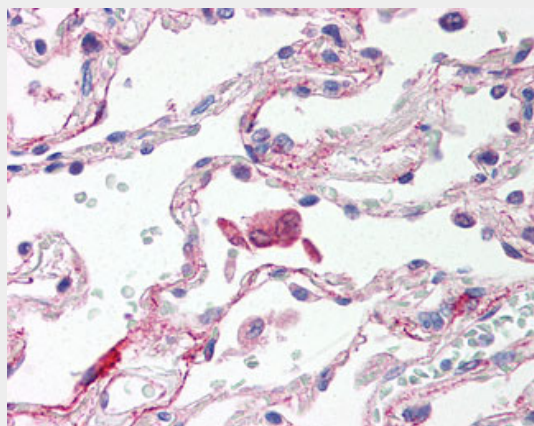
Immunocytochemistry of TLR6 in Jurkat cells with TLR6 antibody at 2 ug/ml.



Western blot of TLR6 in Jurkat cell lysate with TLR6 antibody at (A) 0.5, (B) 1 and (C) 2 ug/ml.



Anti-TLR6 antibody IHC of human thymus.



Anti-TLR6 antibody IHC of human lung, alveolar macrophages.

TLR6 Antibody (Internal) - Background

Participates in the innate immune response to Gram- positive bacteria and fungi. Specifically recognizes diacylated and, to a lesser extent, triacylated lipopeptides. Acts via MYD88 and TRAF6, leading to NF-kappa-B activation, cytokine secretion and the inflammatory response. Recognizes mycoplasmal macrophage- activating lipopeptide-2kD (MALP-2), soluble tuberculosis factor (STF), phenol-soluble modulin (PSM) and B.burgdorferi outer surface protein A lipoprotein (OspA-L)

cooperatively with TLR2. In complex with TLR4, promotes sterile inflammation in monocytes/macrophages in response to oxidized low-density lipoprotein (oxLDL) or amyloid-beta 42. In this context, the initial signal is provided by oxLDL- or amyloid-beta 42-binding to CD36. This event induces the formation of a heterodimer of TLR4 and TLR6, which is rapidly internalized and triggers inflammatory response, leading to the NF-kappa-B-dependent production of CXCL1, CXCL2 and CCL9 cytokines, via MYD88 signaling pathway, and CCL5 cytokine, via TICAM1 signaling pathway, as well as IL1B secretion.

TLR6 Antibody (Internal) - References

- Takeuchi O.,et al.Gene 231:59-65(1999).
Nakajima T.,et al.Immunogenetics 60:727-735(2008).
Liu Z.,et al.Submitted (OCT-2007) to the EMBL/GenBank/DDBJ databases.
Hillier L.W.,et al.Nature 434:724-731(2005).
Mural R.J.,et al.Submitted (JUL-2005) to the EMBL/GenBank/DDBJ databases.