

**SLIT1 Antibody (aa487-504)**  
**Rabbit Polyclonal Antibody**  
**Catalog # ALS11540****Specification**

---

**SLIT1 Antibody (aa487-504) - Product Information**

Application	IHC
Primary Accession	<a href="#">O75093</a>
Reactivity	Human, Mouse, Rat
Host	Rabbit
Clonality	Polyclonal
Calculated MW	168kDa KDa

**SLIT1 Antibody (aa487-504) - Additional Information****Gene ID** 6585**Other Names**

Slit homolog 1 protein, Slit-1, Multiple epidermal growth factor-like domains protein 4, Multiple EGF-like domains protein 4, SLIT1, KIAA0813, MEGF4, SLIL1

**Target/Specificity**

SLIT-1 protein

**Reconstitution & Storage**

+4°C or -20°C, Avoid repeated freezing and thawing.

**Precautions**

SLIT1 Antibody (aa487-504) is for research use only and not for use in diagnostic or therapeutic procedures.

**SLIT1 Antibody (aa487-504) - Protein Information****Name** SLIT1**Synonyms** KIAA0813, MEGF4, SLIL1**Function**

Thought to act as molecular guidance cue in cellular migration, and function appears to be mediated by interaction with roundabout homolog receptors. During neural development involved in axonal navigation at the ventral midline of the neural tube and projection of axons to different regions (By similarity). SLIT1 and SLIT2 together seem to be essential for midline guidance in the forebrain by acting as repulsive signal preventing inappropriate midline crossing by axons projecting from the olfactory bulb.

**Cellular Location**

Secreted.

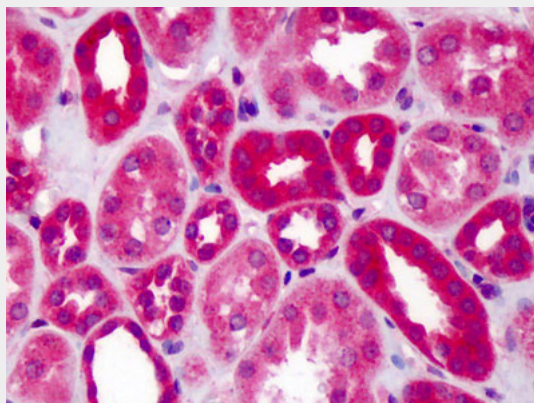
**Tissue Location**

Predominantly expressed in adult forebrain. Expressed in fetal brain, lung and kidney

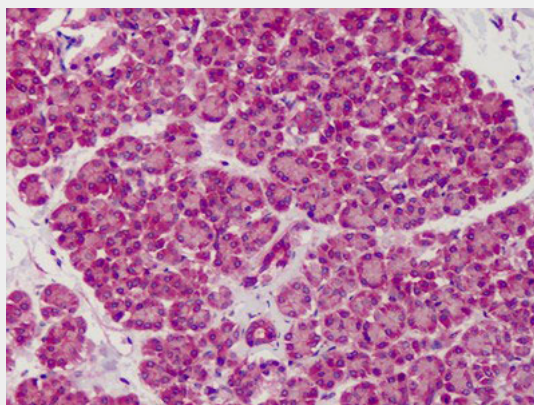
**SLIT1 Antibody (aa487-504) - Protocols**

Provided below are standard protocols that you may find useful for product applications.

- [Western Blot](#)
- [Blocking Peptides](#)
- [Dot Blot](#)
- [Immunohistochemistry](#)
- [Immunofluorescence](#)
- [Immunoprecipitation](#)
- [Flow Cytometry](#)
- [Cell Culture](#)

**SLIT1 Antibody (aa487-504) - Images**

Anti-SLIT1 antibody IHC of human kidney.



Anti-SLIT1 antibody IHC of human pancreas.

**SLIT1 Antibody (aa487-504) - Background**

Thought to act as molecular guidance cue in cellular migration, and function appears to be mediated by interaction with roundabout homolog receptors. During neural development involved in axonal navigation at the ventral midline of the neural tube and projection of axons to different regions (By similarity). SLIT1 and SLIT2 together seem to be essential for midline guidance in the

forebrain by acting as repulsive signal preventing inappropriate midline crossing by axons projecting from the olfactory bulb.

#### **SLIT1 Antibody (aa487-504) - References**

Itoh A.,et al.Brain Res. Mol. Brain Res. 62:175-186(1998).

Nakayama M.,et al.Genomics 51:27-34(1998).

Nakajima D.,et al.DNA Res. 9:99-106(2002).

Nakayama M.,et al.Submitted (APR-2005) to the EMBL/GenBank/DDBJ databases.

Deloukas P.,et al.Nature 429:375-381(2004).