

AP3S2 Antibody
Chicken Polyclonal Antibody
Catalog # ALS11542**Specification**

AP3S2 Antibody - Product Information

Application	WB, IHC-P
Primary Accession	P59780
Reactivity	Human, Mouse
Host	Chicken
Clonality	Polyclonal
Calculated MW	22kDa KDa
Dilution	WB~~1:1000 IHC-P~~N/A

AP3S2 Antibody - Additional Information**Gene ID** 10239**Other Names**

AP-3 complex subunit sigma-2, AP-3 complex subunit sigma-3B, Adaptor-related protein complex 3 subunit sigma-2, Sigma-3B-adaptin, Sigma3B-adaptin, Sigma-adaptin 3b, AP3S2

Target/Specificity

Full length human AP3S2

Reconstitution & Storage

Long term: -20°C; Short term: +4°C. Avoid repeat freeze-thaw cycles.

Precautions

AP3S2 Antibody is for research use only and not for use in diagnostic or therapeutic procedures.

AP3S2 Antibody - Protein Information**Name** AP3S2**Function**

Part of the AP-3 complex, an adaptor-related complex which is not clathrin-associated. The complex is associated with the Golgi region as well as more peripheral structures. It facilitates the budding of vesicles from the Golgi membrane and may be directly involved in trafficking to lysosomes. In concert with the BLOC-1 complex, AP-3 is required to target cargos into vesicles assembled at cell bodies for delivery into neurites and nerve terminals.

Cellular Location

Golgi apparatus. Cytoplasmic vesicle membrane; Peripheral membrane protein; Cytoplasmic side. Note=Component of the coat surrounding the cytoplasmic face of coated vesicles located at the Golgi complex

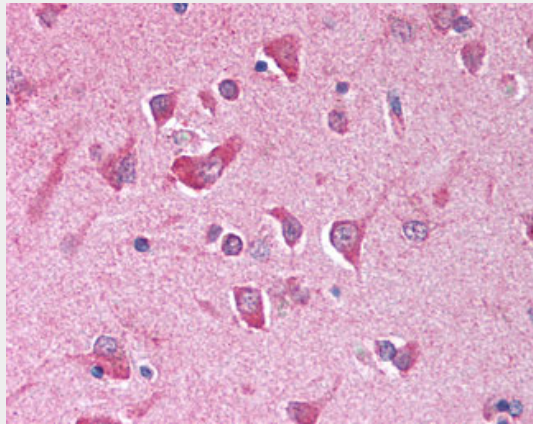
Tissue Location

Present in all adult tissues examined.

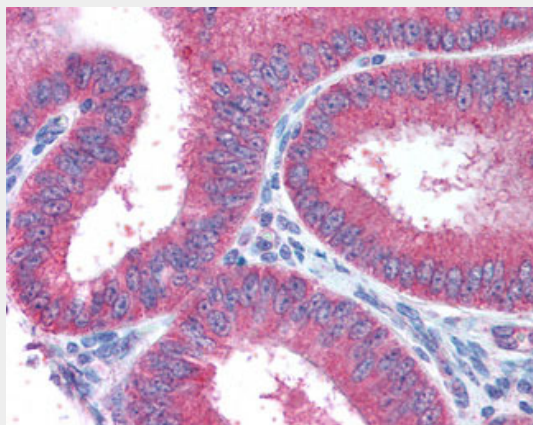
AP3S2 Antibody - Protocols

Provided below are standard protocols that you may find useful for product applications.

- [Western Blot](#)
- [Blocking Peptides](#)
- [Dot Blot](#)
- [Immunohistochemistry](#)
- [Immunofluorescence](#)
- [Immunoprecipitation](#)
- [Flow Cytometry](#)
- [Cell Culture](#)

AP3S2 Antibody - Images

Anti-AP3S2 antibody IHC of human brain, cortex.



Anti-AP3S2 antibody IHC of human uterus.

AP3S2 Antibody - Background

Part of the AP-3 complex, an adaptor-related complex which is not clathrin-associated. The complex is associated with the Golgi region as well as more peripheral structures. It facilitates the budding of vesicles from the Golgi membrane and may be directly involved in trafficking to

lysosomes. In concert with the BLOC-1 complex, AP-3 is required to target cargos into vesicles assembled at cell bodies for delivery into neurites and nerve terminals.

AP3S2 Antibody - References

Dell'Angelica E.C., et al. EMBO J. 16:917-928(1997).

Ota T., et al. Nat. Genet. 36:40-45(2004).

Suzuki Y., et al. Submitted (APR-2005) to the EMBL/GenBank/DDBJ databases.

Zody M.C., et al. Nature 440:671-675(2006).

Mural R.J., et al. Submitted (JUL-2005) to the EMBL/GenBank/DDBJ databases.