

BUB3 Antibody (C-Terminus)
Rabbit Polyclonal Antibody
Catalog # ALS11669**Specification**

BUB3 Antibody (C-Terminus) - Product Information

Application	IHC
Primary Accession	O43684
Reactivity	Human, Mouse
Host	Rabbit
Clonality	Polyclonal
Calculated MW	37kDa KDa

BUB3 Antibody (C-Terminus) - Additional Information**Gene ID** 9184**Other Names**

Mitotic checkpoint protein BUB3, BUB3

Target/Specificity

a 16 amino acid peptide from near the carboxy terminus of human bub3

Reconstitution & Storage

Short term 4°C, long term aliquot and store at -20°C, avoid freeze thaw cycles. Store undiluted.

Precautions

BUB3 Antibody (C-Terminus) is for research use only and not for use in diagnostic or therapeutic procedures.

BUB3 Antibody (C-Terminus) - Protein Information**Name** BUB3**Function**

Has a dual function in spindle-assembly checkpoint signaling and in promoting the establishment of correct kinetochore-microtubule (K-MT) attachments. Promotes the formation of stable end-on bipolar attachments. Necessary for kinetochore localization of BUB1. Regulates chromosome segregation during oocyte meiosis. The BUB1/BUB3 complex plays a role in the inhibition of anaphase-promoting complex or cyclosome (APC/C) when spindle-assembly checkpoint is activated and inhibits the ubiquitin ligase activity of APC/C by phosphorylating its activator CDC20. This complex can also phosphorylate MAD1L1.

Cellular Location

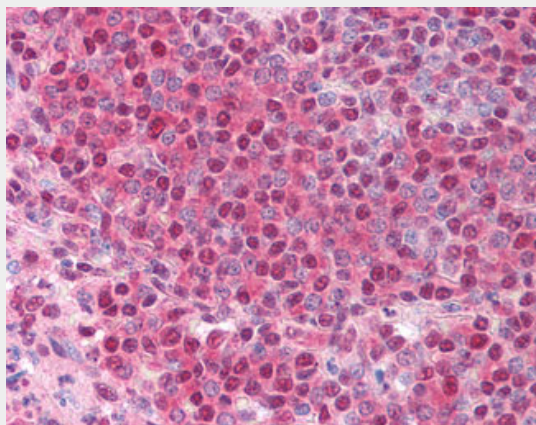
Nucleus. Chromosome, centromere, kinetochore. Note=Starts to localize at kinetochores in prometaphase I (Pro-MI) stage and maintains the localization until the metaphase I- anaphase I (MI-AI) transition.

BUB3 Antibody (C-Terminus) - Protocols

Provided below are standard protocols that you may find useful for product applications.

- [Western Blot](#)
- [Blocking Peptides](#)
- [Dot Blot](#)
- [Immunohistochemistry](#)
- [Immunofluorescence](#)
- [Immunoprecipitation](#)
- [Flow Cytometry](#)
- [Cell Culture](#)

BUB3 Antibody (C-Terminus) - Images



Anti-BUB3 antibody IHC of human spleen.

BUB3 Antibody (C-Terminus) - Background

Has a dual function in spindle-assembly checkpoint signaling and in promoting the establishment of correct kinetochore-microtubule (K-MT) attachments. Promotes the formation of stable end-on bipolar attachments. Necessary for kinetochore localization of BUB1. Regulates chromosome segregation during oocyte meiosis. The BUB1/BUB3 complex plays a role in the inhibition of anaphase-promoting complex or cyclosome (APC/C) when spindle-assembly checkpoint is activated and inhibits the ubiquitin ligase activity of APC/C by phosphorylating its activator CDC20. This complex can also phosphorylate MAD1L1.

BUB3 Antibody (C-Terminus) - References

Seeley T.W., et al. Biochem. Biophys. Res. Commun. 257:589-595(1999).
Taylor S.S., et al. J. Cell Biol. 142:1-11(1998).
Chan G.K.T., et al. Submitted (AUG-1998) to the EMBL/GenBank/DDBJ databases.
Ota T., et al. Nat. Genet. 36:40-45(2004).
Deloukas P., et al. Nature 429:375-381(2004).