

GFRA3 Antibody
Rabbit Polyclonal Antibody
Catalog # ALS11683**Specification**

GFRA3 Antibody - Product Information

Application	IHC
Primary Accession	O60609
Reactivity	Human, Mouse, Rat
Host	Rabbit
Clonality	Polyclonal
Calculated MW	45kDa KDa

GFRA3 Antibody - Additional Information**Gene ID** 2676**Other Names**

GDNF family receptor alpha-3, GDNF receptor alpha-3, GDNFR-alpha-3, GFR-alpha-3, GFRA3

Target/Specificity

peptide corresponding to amino acids from 347 to 360 of murine GFRa-3

Reconstitution & Storage

Short term 4°C, long term aliquot and store at -20°C, avoid freeze thaw cycles. Store undiluted.

Precautions

GFRA3 Antibody is for research use only and not for use in diagnostic or therapeutic procedures.

GFRA3 Antibody - Protein Information**Name** GFRA3**Function**

Receptor for the glial cell line-derived neurotrophic factor, ARTN (artemin). Mediates the artemin-induced autophosphorylation and activation of the RET receptor tyrosine kinase.

Cellular Location

Cell membrane; Lipid-anchor, GPI-anchor.

Tissue Location

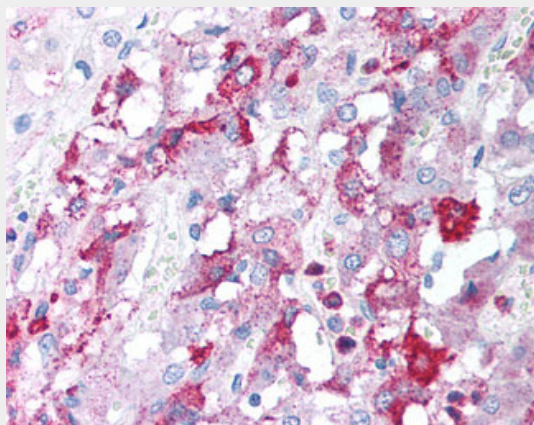
Widely expressed in adult and fetus which exhibit a similar pattern. Essentially not expressed in the central nervous system, but highly expressed in several sensory and sympathetic ganglia of the peripheral nervous system. Moderate expression in many non- neuronal tissues, particularly those of the digestive and urogenital systems, but high expression in stomach and appendix. Several types of glandular tissues show low expression. Very low or no expression detected in the hematopoietic system.

GFRA3 Antibody - Protocols

Provided below are standard protocols that you may find useful for product applications.

- [Western Blot](#)
- [Blocking Peptides](#)
- [Dot Blot](#)
- [Immunohistochemistry](#)
- [Immunofluorescence](#)
- [Immunoprecipitation](#)
- [Flow Cytometry](#)
- [Cell Culture](#)

GFRA3 Antibody - Images



Anti-GFRA3 antibody IHC of human adrenal.

GFRA3 Antibody - Background

Receptor for the glial cell line-derived neurotrophic factor, ARTN (artemin). Mediates the artemin-induced autophosphorylation and activation of the RET receptor tyrosine kinase.

GFRA3 Antibody - References

Baloh R.H.,et al.Proc. Natl. Acad. Sci. U.S.A. 95:5801-5806(1998).
Clark H.F.,et al.Genome Res. 13:2265-2270(2003).
Ota T.,et al.Nat. Genet. 36:40-45(2004).
Mural R.J.,et al.Submitted (SEP-2005) to the EMBL/GenBank/DDBJ databases.
Zhang Z.,et al.Protein Sci. 13:2819-2824(2004).