

PAK7 Antibody (Internal)
Rabbit Polyclonal Antibody
Catalog # ALS11703**Specification**

PAK7 Antibody (Internal) - Product Information

Application	IHC
Primary Accession	Q9P286
Reactivity	Human
Host	Rabbit
Clonality	Polyclonal
Calculated MW	81kDa KDa

PAK7 Antibody (Internal) - Additional Information**Gene ID** 57144**Other Names**

Serine/threonine-protein kinase PAK 7, 2.7.11.1, p21-activated kinase 5, PAK-5, p21-activated kinase 7, PAK-7, PAK7, KIAA1264, PAK5

Target/Specificity

13 amino acid peptide from near the center of human PAK5

Reconstitution & Storage

Short term 4°C, long term aliquot and store at -20°C, avoid freeze thaw cycles. Store undiluted.

Precautions

PAK7 Antibody (Internal) is for research use only and not for use in diagnostic or therapeutic procedures.

PAK7 Antibody (Internal) - Protein Information**Name** PAK5 ([HGNC:15916](#))**Synonyms** KIAA1264, PAK7**Function**

Serine/threonine protein kinase that plays a role in a variety of different signaling pathways including cytoskeleton regulation, cell migration, proliferation or cell survival. Activation by various effectors including growth factor receptors or active CDC42 and RAC1 results in a conformational change and a subsequent autophosphorylation on several serine and/or threonine residues. Phosphorylates the proto-oncogene RAF1 and stimulates its kinase activity. Promotes cell survival by phosphorylating the BCL2 antagonist of cell death BAD. Phosphorylates CTNND1, probably to regulate cytoskeletal organization and cell morphology. Keeps microtubules stable through MARK2 inhibition and destabilizes the F-actin network leading to the disappearance of stress fibers and focal adhesions.

Cellular Location

Mitochondrion. Cytoplasm. Nucleus. Note=Shuttles between the nucleus and the mitochondria, and mitochondrial localization is essential for the role in cell survival

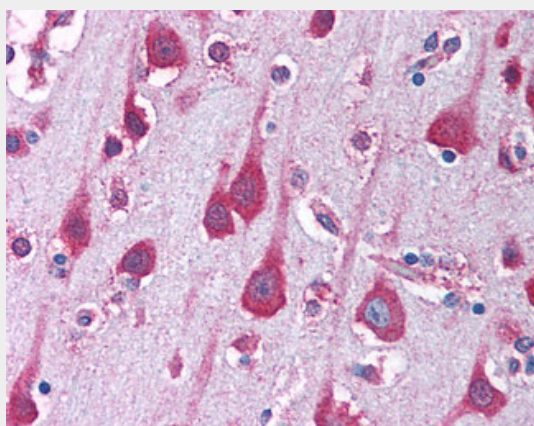
Tissue Location

Predominantly expressed in brain.

PAK7 Antibody (Internal) - Protocols

Provided below are standard protocols that you may find useful for product applications.

- [Western Blot](#)
- [Blocking Peptides](#)
- [Dot Blot](#)
- [Immunohistochemistry](#)
- [Immunofluorescence](#)
- [Immunoprecipitation](#)
- [Flow Cytometry](#)
- [Cell Culture](#)

PAK7 Antibody (Internal) - Images

Anti-PAK7 antibody IHC of human brain, cortex.

PAK7 Antibody (Internal) - Background

Serine/threonine protein kinase that plays a role in a variety of different signaling pathways including cytoskeleton regulation, cell migration, proliferation or cell survival. Activation by various effectors including growth factor receptors or active CDC42 and RAC1 results in a conformational change and a subsequent autophosphorylation on several serine and/or threonine residues. Phosphorylates the proto-oncogene RAF1 and stimulates its kinase activity. Promotes cell survival by phosphorylating the BCL2 antagonist of cell death BAD. Phosphorylates CTNND1, probably to regulate cytoskeletal organization and cell morphology. Keeps microtubules stable through MARK2 inhibition and destabilizes the F-actin network leading to the disappearance of stress fibers and focal adhesions.

PAK7 Antibody (Internal) - References

Pandey A., et al. *Oncogene* 21:3939-3948(2002).
Nagase T., et al. *DNA Res.* 6:337-345(1999).

Ota T.,et al.Nat. Genet. 36:40-45(2004).

Deloukas P.,et al.Nature 414:865-871(2001).

Mural R.J.,et al.Submitted (SEP-2005) to the EMBL/GenBank/DDBJ databases.