

**TBC1 / TBC1D1 Antibody (C-Terminus)**  
**Rabbit Polyclonal Antibody**  
**Catalog # ALS11719****Specification**

---

**TBC1 / TBC1D1 Antibody (C-Terminus) - Product Information**

Application	IHC
Primary Accession	<a href="#">Q86TI0</a>
Reactivity	Human
Host	Rabbit
Clonality	Polyclonal
Calculated MW	133kDa KDa

**TBC1 / TBC1D1 Antibody (C-Terminus) - Additional Information****Gene ID** 23216**Other Names**

TBC1 domain family member 1, TBC1D1, KIAA1108

**Target/Specificity**

a 22 amino acid peptide from near the carboxy terminus of human TBC1D1

**Reconstitution & Storage**

Short term 4°C, long term aliquot and store at -20°C, avoid freeze thaw cycles. Store undiluted.

**Precautions**

TBC1 / TBC1D1 Antibody (C-Terminus) is for research use only and not for use in diagnostic or therapeutic procedures.

**TBC1 / TBC1D1 Antibody (C-Terminus) - Protein Information****Name** TBC1D1**Synonyms** KIAA1108**Function**

May act as a GTPase-activating protein for Rab family protein(s). May play a role in the cell cycle and differentiation of various tissues. Involved in the trafficking and translocation of GLUT4-containing vesicles and insulin-stimulated glucose uptake into cells (By similarity).

**Cellular Location**

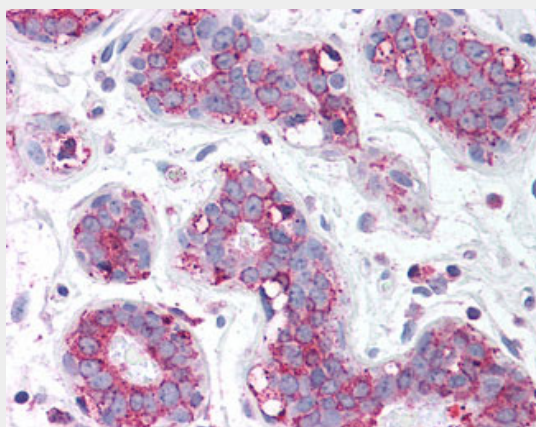
Nucleus.

**TBC1 / TBC1D1 Antibody (C-Terminus) - Protocols**

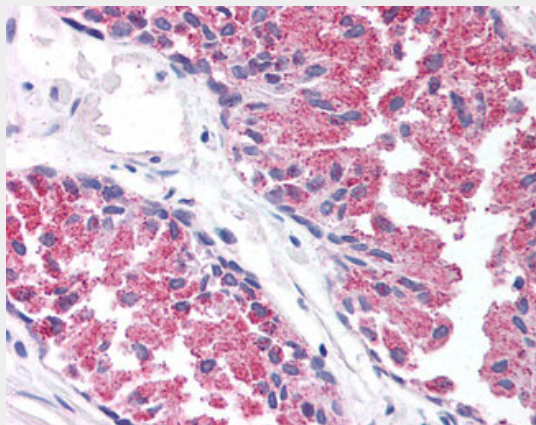
Provided below are standard protocols that you may find useful for product applications.

- [Western Blot](#)
- [Blocking Peptides](#)
- [Dot Blot](#)
- [Immunohistochemistry](#)
- [Immunofluorescence](#)
- [Immunoprecipitation](#)
- [Flow Cytometry](#)
- [Cell Culture](#)

#### **TBC1 / TBC1D1 Antibody (C-Terminus) - Images**



Anti-TBC1D1 antibody IHC of human breast.



Anti-TBC1D1 antibody IHC of human prostate.

#### **TBC1 / TBC1D1 Antibody (C-Terminus) - Background**

May act as a GTPase-activating protein for Rab family protein(s). May play a role in the cell cycle and differentiation of various tissues. Involved in the trafficking and translocation of GLUT4-containing vesicles and insulin-stimulated glucose uptake into cells (By similarity).

#### **TBC1 / TBC1D1 Antibody (C-Terminus) - References**

Ota T.,et al.Nat. Genet. 36:40-45(2004).  
Hillier L.W.,et al.Nature 434:724-731(2005).  
Kikuno R.,et al.DNA Res. 6:197-205(1999).  
Nakajima D.,et al.DNA Res. 9:99-106(2002).

Rush J.,et al.Nat. Biotechnol. 23:94-101(2005).