

PACSIN2 Antibody (aa400-450)
Rabbit Polyclonal Antibody
Catalog # ALS11918**Specification**

PACSIN2 Antibody (aa400-450) - Product Information

Application	WB, IHC
Primary Accession	Q9UNF0
Reactivity	Human, Mouse, Rat, Chicken, Xenopus, Bovine, Dog
Host	Rabbit
Clonality	Polyclonal
Calculated MW	56kDa KDa

PACSIN2 Antibody (aa400-450) - Additional Information**Gene ID** 11252**Other Names**

Protein kinase C and casein kinase substrate in neurons protein 2, Syndapin-2, Syndapin-II, PACSIN2

Target/Specificity

A portion of amino acids 400-450 of human PACSIN2

Reconstitution & Storage

Short term 4°C, long term aliquot and store at -20°C, avoid freeze thaw cycles.

Precautions

PACSIN2 Antibody (aa400-450) is for research use only and not for use in diagnostic or therapeutic procedures.

PACSIN2 Antibody (aa400-450) - Protein Information**Name** PACSIN2**Function**

Regulates the morphogenesis and endocytosis of caveolae (By similarity). Lipid-binding protein that is able to promote the tubulation of the phosphatidic acid-containing membranes it preferentially binds. Plays a role in intracellular vesicle-mediated transport. Involved in the endocytosis of cell-surface receptors like the EGF receptor, contributing to its internalization in the absence of EGF stimulus.

Cellular Location

Cytoplasm. Cytoplasm, cytoskeleton. Cytoplasmic vesicle membrane; Peripheral membrane protein; Cytoplasmic side. Early endosome. Recycling endosome membrane Cell projection, ruffle membrane; Peripheral membrane protein; Cytoplasmic side. Cell membrane; Peripheral membrane protein; Cytoplasmic side. Cell projection Membrane, caveola. Note=Detected at the

neck of flask-shaped caveolae. Localization to tubular recycling endosomes probably requires interaction with MICALL1 and EHD1

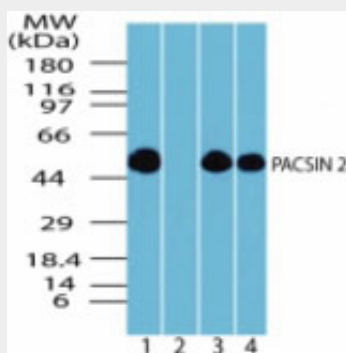
Tissue Location

Widely expressed.

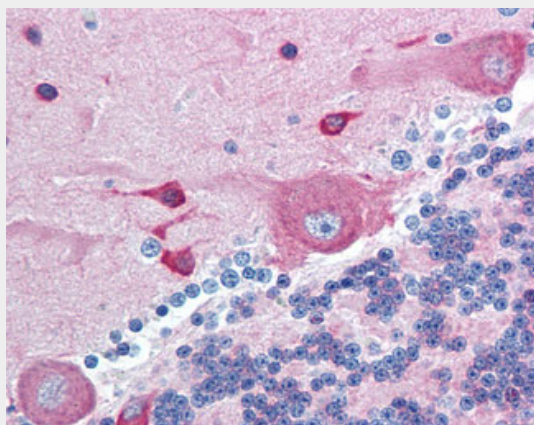
PACSIN2 Antibody (aa400-450) - Protocols

Provided below are standard protocols that you may find useful for product applications.

- [Western Blot](#)
- [Blocking Peptides](#)
- [Dot Blot](#)
- [Immunohistochemistry](#)
- [Immunofluorescence](#)
- [Immunoprecipitation](#)
- [Flow Cytometry](#)
- [Cell Culture](#)

PACSIN2 Antibody (aa400-450) - Images

Western blot of PACSIN2 in human brain lysate in the 1) absence and 2) presence of immunizing...



Anti-PACSIN2 antibody IHC of human brain, cerebellum.

PACSIN2 Antibody (aa400-450) - Background

Lipid-binding protein that is able to promote the tubulation of the phosphatidic acid-containing membranes it preferentially binds. Plays a role in intracellular vesicle-mediated transport. Involved

in the endocytosis of cell-surface receptors like the EGF receptor, contributing to its internalization in the absence of EGF stimulus. May also play a role in the formation of caveolae at the cell membrane. Recruits DNM2 to caveolae, and thereby plays a role in caveola-mediated endocytosis.

PACSIN2 Antibody (aa400-450) - References

Ritter B.,et al.FEBS Lett. 454:356-362(1999).
Wiemann S.,et al.Genome Res. 11:422-435(2001).
Collins J.E.,et al.Genome Biol. 5:R84.1-R84.11(2004).
Dunham I.,et al.Nature 402:489-495(1999).
Modregger J.,et al.J. Cell Sci. 113:4511-4521(2000).