

**ARHGEF11 Antibody (aa1-50)**  
**Rabbit Polyclonal Antibody**  
**Catalog # ALS11932****Specification**

---

**ARHGEF11 Antibody (aa1-50) - Product Information**

Application	IHC
Primary Accession	<a href="#">O15085</a>
Reactivity	Human, Mouse, Rat, Monkey, Chicken, Horse, Bovine, Dog
Host	Rabbit
Clonality	Polyclonal
Calculated MW	168kDa KDa

**ARHGEF11 Antibody (aa1-50) - Additional Information****Gene ID** 9826**Other Names**

Rho guanine nucleotide exchange factor 11, PDZ-RhoGEF, ARHGEF11, KIAA0380

**Target/Specificity**

A portion of amino acids 1-50 of human ARHGEF11

**Reconstitution & Storage**

Short term 4°C, long term aliquot and store at -20°C, avoid freeze thaw cycles.

**Precautions**

ARHGEF11 Antibody (aa1-50) is for research use only and not for use in diagnostic or therapeutic procedures.

**ARHGEF11 Antibody (aa1-50) - Protein Information****Name** ARHGEF11**Synonyms** KIAA0380**Function**

May play a role in the regulation of RhoA GTPase by guanine nucleotide-binding alpha-12 (GNA12) and alpha-13 (GNA13). Acts as guanine nucleotide exchange factor (GEF) for RhoA GTPase and may act as GTPase-activating protein (GAP) for GNA12 and GNA13. Involved in neurotrophin-induced neurite outgrowth.

**Cellular Location**

Cytoplasm. Membrane. Note=Translocated to the membrane upon stimulation

**Tissue Location**

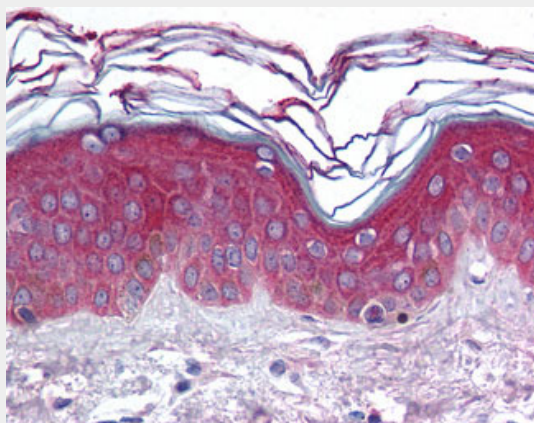
Ubiquitously expressed.

## ARHGEF11 Antibody (aa1-50) - Protocols

Provided below are standard protocols that you may find useful for product applications.

- [Western Blot](#)
- [Blocking Peptides](#)
- [Dot Blot](#)
- [Immunohistochemistry](#)
- [Immunofluorescence](#)
- [Immunoprecipitation](#)
- [Flow Cytometry](#)
- [Cell Culture](#)

## ARHGEF11 Antibody (aa1-50) - Images



Anti-ARHGEF11 antibody IHC of human skin.

## ARHGEF11 Antibody (aa1-50) - Background

May play a role in the regulation of RhoA GTPase by guanine nucleotide-binding alpha-12 (GNA12) and alpha-13 (GNA13). Acts as guanine nucleotide exchange factor (GEF) for RhoA GTPase and may act as GTPase-activating protein (GAP) for GNA12 and GNA13. Involved in neurotrophin-induced neurite outgrowth.

## ARHGEF11 Antibody (aa1-50) - References

- Nagase T., et al. DNA Res. 4:141-150(1997).  
Gregory S.G., et al. Nature 441:315-321(2006).  
Mural R.J., et al. Submitted (SEP-2005) to the EMBL/GenBank/DBJ databases.  
Ruemenapp U., et al. FEBS Lett. 459:313-318(1999).  
Fukuhara S., et al. J. Biol. Chem. 274:5868-5879(1999).