

Derlin-3 / DERL3 Antibody (N-Terminus)
Rabbit Polyclonal Antibody
Catalog # ALS11953**Specification**

Derlin-3 / DERL3 Antibody (N-Terminus) - Product Information

Application	IHC
Primary Accession	O96Q80
Reactivity	Human
Host	Rabbit
Clonality	Polyclonal
Calculated MW	27kDa KDa

Derlin-3 / DERL3 Antibody (N-Terminus) - Additional Information**Gene ID** 91319**Other Names**

Derlin-3, Degradation in endoplasmic reticulum protein 3, DERtrin-3, Der1-like protein 3, DERL3, C22orf14, DER3, LLN2

Target/Specificity

synthetic peptide corresponding to N-terminal residues of human DERL3 (Derlin-3)

Reconstitution & Storage

+4°C or -20°C, Avoid repeated freezing and thawing.

Precautions

Derlin-3 / DERL3 Antibody (N-Terminus) is for research use only and not for use in diagnostic or therapeutic procedures.

Derlin-3 / DERL3 Antibody (N-Terminus) - Protein Information**Name** DERL3 ([HGNC:14236](#))**Function**

Functional component of endoplasmic reticulum-associated degradation (ERAD) for misfolded luminal glycoproteins, but not that of misfolded nonglycoproteins. May act by forming a channel that allows the retrotranslocation of misfolded glycoproteins into the cytosol where they are ubiquitinated and degraded by the proteasome. May mediate the interaction between VCP and the misfolded glycoproteins (PubMed: [16449189](http://www.uniprot.org/citations/16449189), PubMed: [22607976](http://www.uniprot.org/citations/22607976)). May be involved in endoplasmic reticulum stress-induced pre-emptive quality control, a mechanism that selectively attenuates the translocation of newly synthesized proteins into the endoplasmic reticulum and reroutes them to the cytosol for proteasomal degradation (PubMed: [26565908](http://www.uniprot.org/citations/26565908)).

Cellular Location

Endoplasmic reticulum membrane; Multi-pass membrane protein

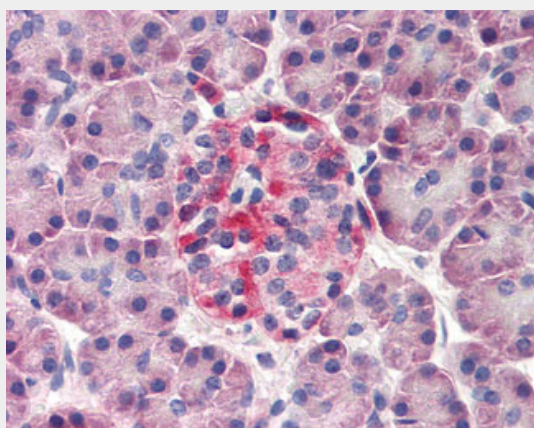
Tissue Location

Unlike DERL1 and DERL2, restricted to several tissues. Expressed at high levels in placenta, pancreas, spleen and small intestine.

Derlin-3 / DERL3 Antibody (N-Terminus) - Protocols

Provided below are standard protocols that you may find useful for product applications.

- [Western Blot](#)
- [Blocking Peptides](#)
- [Dot Blot](#)
- [Immunohistochemistry](#)
- [Immunofluorescence](#)
- [Immunoprecipitation](#)
- [Flow Cytometry](#)
- [Cell Culture](#)

Derlin-3 / DERL3 Antibody (N-Terminus) - Images

Anti-DERL3 antibody IHC of human pancreas.

Derlin-3 / DERL3 Antibody (N-Terminus) - Background

Functional component of endoplasmic reticulum-associated degradation (ERAD) for misfolded luminal glycoproteins, but not that of misfolded nonglycoproteins. May act by forming a channel that allows the retrotranslocation of misfolded glycoproteins into the cytosol where they are ubiquitinated and degraded by the proteasome. May mediate the interaction between VCP and the degradation substrate.

Derlin-3 / DERL3 Antibody (N-Terminus) - References

Shimizu N., et al. Submitted (SEP-2000) to the EMBL/GenBank/DDBJ databases.
Ota T., et al. Nat. Genet. 36:40-45(2004).
Collins J.E., et al. Genome Biol. 5:R84.1-R84.11(2004).
Dunham I., et al. Nature 402:489-495(1999).
Oda Y., et al. J. Cell Biol. 172:383-393(2006).