

**TF / Transferrin Antibody (clone HTF-14)**  
**Mouse Monoclonal Antibody**  
**Catalog # ALS11977****Specification**

---

**TF / Transferrin Antibody (clone HTF-14) - Product Information**

Application	IHC
Primary Accession	<a href="#">P02787</a>
Reactivity	Human, Rabbit, Pig
Host	Mouse
Clonality	Monoclonal
Calculated MW	77kDa KDa

**TF / Transferrin Antibody (clone HTF-14) - Additional Information****Gene ID** 7018**Other Names**

Serotransferrin, Transferrin, Beta-1 metal-binding globulin, Siderophilin, TF

**Target/Specificity**

Detects human, porcine and rabbit transferrin.

**Reconstitution & Storage**

Short term 4°C, long term aliquot and store at -20°C, avoid freeze thaw cycles.

**Precautions**

TF / Transferrin Antibody (clone HTF-14) is for research use only and not for use in diagnostic or therapeutic procedures.

**TF / Transferrin Antibody (clone HTF-14) - Protein Information****Name** TF ([HGNC:11740](#))**Function**

Transferrins are iron binding transport proteins which can bind two Fe(3+) ions in association with the binding of an anion, usually bicarbonate. It is responsible for the transport of iron from sites of absorption and heme degradation to those of storage and utilization. Serum transferrin may also have a further role in stimulating cell proliferation. (Microbial infection) Serves as an iron source for parasite *T.brucei* (strain 427), which capture TF via its own transferrin receptor ESAG6:ESAG7 and extract its iron for its own use.

**Cellular Location**

Secreted.

**Tissue Location**

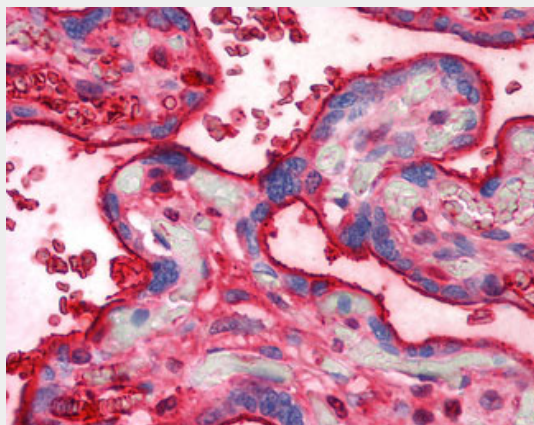
Expressed by the liver and secreted in plasma.

## TF / Transferrin Antibody (clone HTF-14) - Protocols

Provided below are standard protocols that you may find useful for product applications.

- [Western Blot](#)
- [Blocking Peptides](#)
- [Dot Blot](#)
- [Immunohistochemistry](#)
- [Immunofluorescence](#)
- [Immunoprecipitation](#)
- [Flow Cytometry](#)
- [Cell Culture](#)

## TF / Transferrin Antibody (clone HTF-14) - Images



Anti-TF / Transferrin antibody IHC of human placenta.

## TF / Transferrin Antibody (clone HTF-14) - Background

Transferrins are iron binding transport proteins which can bind two  $\text{Fe}(3+)$  ions in association with the binding of an anion, usually bicarbonate. It is responsible for the transport of iron from sites of absorption and heme degradation to those of storage and utilization. Serum transferrin may also have a further role in stimulating cell proliferation.

## TF / Transferrin Antibody (clone HTF-14) - References

Yang F., et al. Proc. Natl. Acad. Sci. U.S.A. 81:2752-2756(1984).  
Schaeffer E., et al. Gene 56:109-116(1987).  
Hershberger C.L., et al. Ann. N. Y. Acad. Sci. 646:140-154(1991).  
Beutler E., et al. Blood 96:4071-4074(2000).  
Muzny D.M., et al. Nature 440:1194-1198(2006).