

TUBB / Beta Tubulin Antibody (clone TU-06)
Mouse Monoclonal Antibody
Catalog # ALS11985

Specification

TUBB / Beta Tubulin Antibody (clone TU-06) - Product Information

Application	WB, IHC-P, ICC
Primary Accession	P07437
Reactivity	Human, Pig
Host	Mouse
Clonality	Monoclonal
Calculated MW	50kDa KDa
Dilution	WB~~1:1000 IHC-P~~N/A ICC~~N/A

TUBB / Beta Tubulin Antibody (clone TU-06) - Additional Information

Gene ID 203068

Other Names

Tubulin beta chain, Tubulin beta-5 chain, TUBB, TUBB5

Target/Specificity

Beta-subunits of porcine brain tubulin

Reconstitution & Storage

+4°C, avoid freezing

Precautions

TUBB / Beta Tubulin Antibody (clone TU-06) is for research use only and not for use in diagnostic or therapeutic procedures.

TUBB / Beta Tubulin Antibody (clone TU-06) - Protein Information

Name TUBB

Synonyms TUBB5

Function

Tubulin is the major constituent of microtubules, a cylinder consisting of laterally associated linear protofilaments composed of alpha- and beta-tubulin heterodimers. Microtubules grow by the addition of GTP-tubulin dimers to the microtubule end, where a stabilizing cap forms. Below the cap, tubulin dimers are in GDP-bound state, owing to GTPase activity of alpha-tubulin.

Cellular Location

Cytoplasm, cytoskeleton

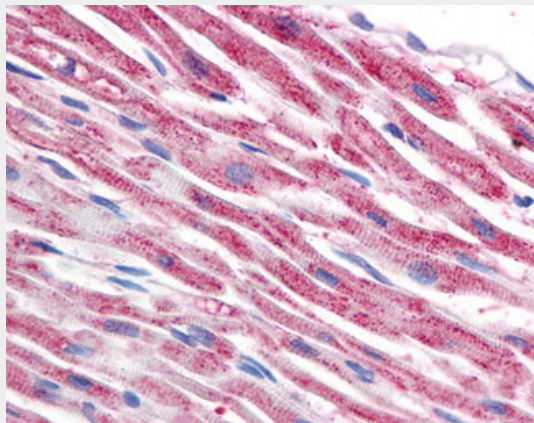
Tissue Location

Ubiquitously expressed with highest levels in spleen, thymus and immature brain.

TUBB / Beta Tubulin Antibody (clone TU-06) - Protocols

Provided below are standard protocols that you may find useful for product applications.

- [Western Blot](#)
- [Blocking Peptides](#)
- [Dot Blot](#)
- [Immunohistochemistry](#)
- [Immunofluorescence](#)
- [Immunoprecipitation](#)
- [Flow Cytometry](#)
- [Cell Culture](#)

TUBB / Beta Tubulin Antibody (clone TU-06) - Images

Anti-TUBB / Tubulin, Beta antibody IHC of human heart.

TUBB / Beta Tubulin Antibody (clone TU-06) - Background

Tubulin is the major constituent of microtubules. It binds two moles of GTP, one at an exchangeable site on the beta chain and one at a non-exchangeable site on the alpha chain.

TUBB / Beta Tubulin Antibody (clone TU-06) - References

- Lee M.G.-S., et al. Cell 33:477-487(1983).
Hall J.L., et al. Mol. Cell. Biol. 3:854-862(1983).
Crabtree D.V., et al. Bioorg. Med. Chem. 9:1967-1976(2001).
Yu W., et al. Submitted (JUN-1998) to the EMBL/GenBank/DDBJ databases.
Shiina S., et al. Submitted (SEP-1999) to the EMBL/GenBank/DDBJ databases.