

**VCP Antibody (clone 4G9)**  
**Mouse Monoclonal Antibody**  
**Catalog # ALS12010****Specification**

---

**VCP Antibody (clone 4G9) - Product Information**

Application	WB, IHC-P, IF, ICC, IP
Primary Accession	<a href="#">P55072</a>
Reactivity	Human
Host	Mouse
Clonality	Monoclonal
Calculated MW	89kDa KDa
Dilution	WB~~1:1000 IHC-P~~N/A IF~~1:50~200 ICC~~N/A IP~~N/A

**VCP Antibody (clone 4G9) - Additional Information****Gene ID** 7415**Other Names**

Transitional endoplasmic reticulum ATPase, TER ATPase, 3.6.4.6, 15S Mg(2+)-ATPase p97 subunit, Valosin-containing protein, VCP, VCP

**Target/Specificity**

Recombinant human valosin containing protein

**Reconstitution & Storage**

Long term: -20°C; Short term: +4°C; Avoid freeze-thaw cycles.

**Precautions**

VCP Antibody (clone 4G9) is for research use only and not for use in diagnostic or therapeutic procedures.

**VCP Antibody (clone 4G9) - Protein Information****Name** VCP**Function**

Necessary for the fragmentation of Golgi stacks during mitosis and for their reassembly after mitosis. Involved in the formation of the transitional endoplasmic reticulum (tER). The transfer of membranes from the endoplasmic reticulum to the Golgi apparatus occurs via 50-70 nm transition vesicles which derive from part-rough, part-smooth transitional elements of the endoplasmic reticulum (tER). Vesicle budding from the tER is an ATP-dependent process. The ternary complex containing UFD1, VCP and NPLOC4 binds ubiquitinated proteins and is necessary for the export of misfolded proteins from the ER to the cytoplasm, where they are degraded by the proteasome.

The NPLOC4- UFD1-VCP complex regulates spindle disassembly at the end of mitosis and is necessary for the formation of a closed nuclear envelope. Regulates E3 ubiquitin-protein ligase activity of RNF19A. Component of the VCP/p97-AMFR/gp78 complex that participates in the final step of the sterol-mediated ubiquitination and endoplasmic reticulum-associated degradation (ERAD) of HMGCR. Mediates the endoplasmic reticulum- associated degradation of CHRNA3 in cortical neurons as part of the STUB1-VCP-UBXN2A complex (PubMed:<a href="http://www.uniprot.org/citations/26265139" target="\_blank">26265139</a>). Involved in endoplasmic reticulum stress-induced pre-emptive quality control, a mechanism that selectively attenuates the translocation of newly synthesized proteins into the endoplasmic reticulum and reroutes them to the cytosol for proteasomal degradation (PubMed:<a href="http://www.uniprot.org/citations/26565908" target="\_blank">26565908</a>). Involved in clearance process by mediating G3BP1 extraction from stress granules (PubMed:<a href="http://www.uniprot.org/citations/29804830" target="\_blank">29804830</a>, PubMed:<a href="http://www.uniprot.org/citations/34739333" target="\_blank">34739333</a>). Also involved in DNA damage response: recruited to double-strand breaks (DSBs) sites in a RNF8- and RNF168-dependent manner and promotes the recruitment of TP53BP1 at DNA damage sites (PubMed:<a href="http://www.uniprot.org/citations/22020440" target="\_blank">22020440</a>, PubMed:<a href="http://www.uniprot.org/citations/22120668" target="\_blank">22120668</a>). Recruited to stalled replication forks by SPRTN: may act by mediating extraction of DNA polymerase eta (POLH) to prevent excessive translesion DNA synthesis and limit the incidence of mutations induced by DNA damage (PubMed:<a href="http://www.uniprot.org/citations/23042605" target="\_blank">23042605</a>, PubMed:<a href="http://www.uniprot.org/citations/23042607" target="\_blank">23042607</a>). Together with SPRTN metalloprotease, involved in the repair of covalent DNA-protein cross- links (DPCs) during DNA synthesis (PubMed:<a href="http://www.uniprot.org/citations/32152270" target="\_blank">32152270</a>). Involved in interstrand cross-link repair in response to replication stress by mediating unloading of the ubiquitinated CMG helicase complex (By similarity). Mediates extraction of PARP1 trapped to chromatin: recognizes and binds ubiquitinated PARP1 and promotes its removal (PubMed:<a href="http://www.uniprot.org/citations/35013556" target="\_blank">35013556</a>). Required for cytoplasmic retrotranslocation of stressed/damaged mitochondrial outer-membrane proteins and their subsequent proteasomal degradation (PubMed:<a href="http://www.uniprot.org/citations/16186510" target="\_blank">16186510</a>, PubMed:<a href="http://www.uniprot.org/citations/21118995" target="\_blank">21118995</a>). Essential for the maturation of ubiquitin-containing autophagosomes and the clearance of ubiquitinated protein by autophagy (PubMed:<a href="http://www.uniprot.org/citations/20104022" target="\_blank">20104022</a>, PubMed:<a href="http://www.uniprot.org/citations/27753622" target="\_blank">27753622</a>). Acts as a negative regulator of type I interferon production by interacting with RIGI: interaction takes place when RIGI is ubiquitinated via 'Lys-63'-linked ubiquitin on its CARD domains, leading to recruit RNF125 and promote ubiquitination and degradation of RIGI (PubMed:<a href="http://www.uniprot.org/citations/26471729" target="\_blank">26471729</a>). May play a role in the ubiquitin-dependent sorting of membrane proteins to lysosomes where they undergo degradation (PubMed:<a href="http://www.uniprot.org/citations/21822278" target="\_blank">21822278</a>). May more particularly play a role in caveolins sorting in cells (PubMed:<a href="http://www.uniprot.org/citations/21822278" target="\_blank">21822278</a>, PubMed:<a href="http://www.uniprot.org/citations/23335559" target="\_blank">23335559</a>). By controlling the steady-state expression of the IGF1R receptor, indirectly regulates the insulin-like growth factor receptor signaling pathway (PubMed:<a href="http://www.uniprot.org/citations/26692333" target="\_blank">26692333</a>).

### Cellular Location

Cytoplasm, cytosol. Endoplasmic reticulum. Nucleus. Cytoplasm, Stress granule. Note=Present in the neuronal hyaline inclusion bodies specifically found in motor neurons from amyotrophic lateral sclerosis patients (PubMed:15456787). Present in the Lewy bodies specifically found in neurons from Parkinson disease patients (PubMed:15456787). Recruited to the cytoplasmic surface of the endoplasmic reticulum via interaction with AMFR/gp78 (PubMed:16168377) Following DNA double-strand breaks, recruited to the sites of damage (PubMed:22120668). Recruited to stalled

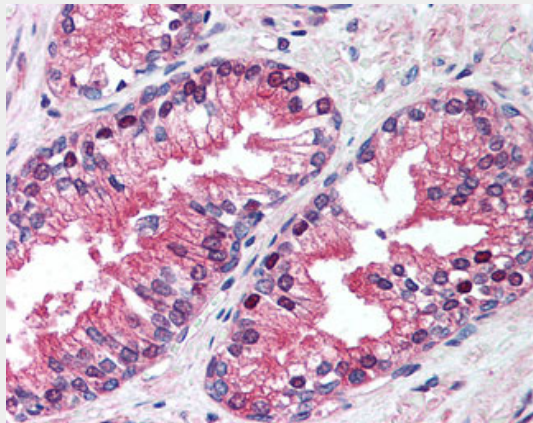
replication forks via interaction with SPRTN (PubMed:23042605). Recruited to damaged lysosomes decorated with K48-linked ubiquitin chains (PubMed:27753622) Colocalizes with TIA1, ZFAND1 and G3BP1 in cytoplasmic stress granules (SGs) in response to arsenite-induced stress treatment (PubMed:29804830).

### **VCP Antibody (clone 4G9) - Protocols**

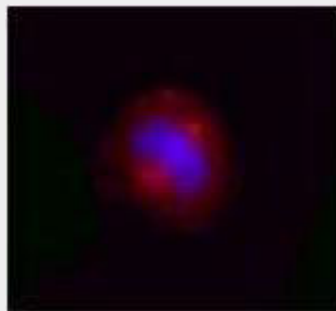
Provided below are standard protocols that you may find useful for product applications.

- [Western Blot](#)
- [Blocking Peptides](#)
- [Dot Blot](#)
- [Immunohistochemistry](#)
- [Immunofluorescence](#)
- [Immunoprecipitation](#)
- [Flow Cytometry](#)
- [Cell Culture](#)

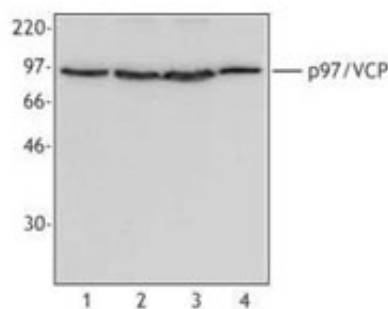
### **VCP Antibody (clone 4G9) - Images**



Anti-VCP antibody IHC of human prostate.



Overnight nocodazole treated Hela cells stained with purified mouse monoclonal antibody against...



Western blot of extracts from HeLa cells (Lane 1), Jurkat cells (Lane 2), MCF7 cells (Lane 3),...

### **VCP Antibody (clone 4G9) - Background**

Necessary for the fragmentation of Golgi stacks during mitosis and for their reassembly after mitosis. Involved in the formation of the transitional endoplasmic reticulum (tER). The transfer of membranes from the endoplasmic reticulum to the Golgi apparatus occurs via 50-70 nm transition vesicles which derive from part-rough, part-smooth transitional elements of the endoplasmic reticulum (tER). Vesicle budding from the tER is an ATP-dependent process. The ternary complex containing UFD1L, VCP and NPLOC4 binds ubiquitinated proteins and is necessary for the export of misfolded proteins from the ER to the cytoplasm, where they are degraded by the proteasome. The NPLOC4-UFD1L-VCP complex regulates spindle disassembly at the end of mitosis and is necessary for the formation of a closed nuclear envelope. Regulates E3 ubiquitin-protein ligase activity of RNF19A. Component of the VCP/p97-AMFR/gp78 complex that participates in the final step of the sterol-mediated ubiquitination and endoplasmic reticulum-associated degradation (ERAD) of HMGCR. Also involved in DNA damage response: recruited to double-strand breaks (DSBs) sites in a RNF8- and RNF168-dependent manner and promotes the recruitment of TP53BP1 at DNA damage sites. Recruited to stalled replication forks by SPRTN: may act by mediating extraction of DNA polymerase eta (POLH) to prevent excessive translesion DNA synthesis and limit the incidence of mutations induced by DNA damage. Required for cytoplasmic retrotranslocation of stressed/damaged mitochondrial outer-membrane proteins and their subsequent proteasomal degradation.

### **VCP Antibody (clone 4G9) - References**

Lamerdin J.E., et al. Submitted (MAR-1998) to the EMBL/GenBank/DDBJ databases.  
Hu R.-M., et al. Proc. Natl. Acad. Sci. U.S.A. 97:9543-9548(2000).  
Ota T., et al. Nat. Genet. 36:40-45(2004).  
Humphray S.J., et al. Nature 429:369-374(2004).  
Mural R.J., et al. Submitted (SEP-2005) to the EMBL/GenBank/DDBJ databases.