

**CRP / C-Reactive Protein Antibody**  
**Rabbit Polyclonal Antibody**  
**Catalog # ALS12043****Specification**

---

**CRP / C-Reactive Protein Antibody - Product Information**

|                   |                        |
|-------------------|------------------------|
| Application       | WB, IHC                |
| Primary Accession | <a href="#">P02741</a> |
| Reactivity        | Human                  |
| Host              | Rabbit                 |
| Clonality         | Polyclonal             |
| Calculated MW     | 25kDa KDa              |

**CRP / C-Reactive Protein Antibody - Additional Information****Gene ID** 1401**Other Names**

C-reactive protein, C-reactive protein(1-205), CRP, PTX1

**Target/Specificity**

Recombinant (partial)

**Reconstitution & Storage**

Aliquot and store at -20°C. Minimize freezing and thawing.

**Precautions**

CRP / C-Reactive Protein Antibody is for research use only and not for use in diagnostic or therapeutic procedures.

**CRP / C-Reactive Protein Antibody - Protein Information****Name** CRP**Synonyms** PTX1**Function**

Displays several functions associated with host defense: it promotes agglutination, bacterial capsular swelling, phagocytosis and complement fixation through its calcium-dependent binding to phosphorylcholine. Can interact with DNA and histones and may scavenge nuclear material released from damaged circulating cells.

**Cellular Location**

Secreted.

**Tissue Location**

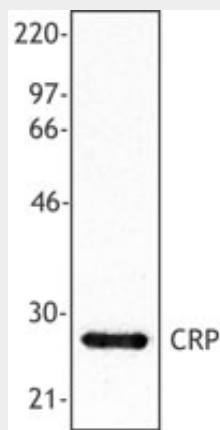
Found in plasma.

## CRP / C-Reactive Protein Antibody - Protocols

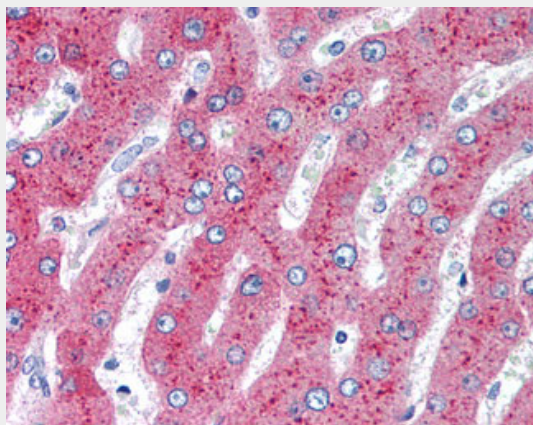
Provided below are standard protocols that you may find useful for product applications.

- [Western Blot](#)
- [Blocking Peptides](#)
- [Dot Blot](#)
- [Immunohistochemistry](#)
- [Immunofluorescence](#)
- [Immunoprecipitation](#)
- [Flow Cytometry](#)
- [Cell Culture](#)

## CRP / C-Reactive Protein Antibody - Images



Recombinant human C-reactive protein (20 ng per lane) was resolved by electrophoresis,...



Anti-CRP / C-Reactive Protein antibody IHC of human liver.

## CRP / C-Reactive Protein Antibody - Background

Displays several functions associated with host defense: it promotes agglutination, bacterial capsular swelling, phagocytosis and complement fixation through its calcium-dependent binding to phosphorylcholine. Can interact with DNA and histones and may scavenge nuclear material released from damaged circulating cells.

## CRP / C-Reactive Protein Antibody - References

Lei K.-J., et al. J. Biol. Chem. 260:13377-13383(1985).

Woo P., et al. J. Biol. Chem. 260:13384-13388(1985).

Murphy T.M., et al. Submitted (NOV-1990) to the EMBL/GenBank/DDBJ databases.

Tenchini M.L., et al. Submitted (MAY-1992) to the EMBL/GenBank/DDBJ databases.

Harraghy N., et al. Submitted (DEC-2001) to the EMBL/GenBank/DDBJ databases.