

HTRA3 Antibody (aa250-300)
Rabbit Polyclonal Antibody
Catalog # ALS12086**Specification**

HTRA3 Antibody (aa250-300) - Product Information

Application	WB, IHC
Primary Accession	P83110
Reactivity	Human, Rat, Monkey
Host	Rabbit
Clonality	Polyclonal
Calculated MW	49kDa KDa

HTRA3 Antibody (aa250-300) - Additional Information**Gene ID** 94031**Other Names**

Serine protease HTRA3, 3.4.21.-, High-temperature requirement factor A3, Pregnancy-related serine protease, HTRA3, PRSP

Target/Specificity

A synthetic peptide within amino acid residues 250-300 of human HtrA3 was used as immunogen.

Reconstitution & Storage

Short term 4°C, long term aliquot and store at -20°C, avoid freeze thaw cycles.

Precautions

HTRA3 Antibody (aa250-300) is for research use only and not for use in diagnostic or therapeutic procedures.

HTRA3 Antibody (aa250-300) - Protein Information**Name** HTRA3**Synonyms** PRSP**Function**

Serine protease that cleaves beta-casein/CSN2 as well as several extracellular matrix (ECM) proteoglycans such as decorin/DCN, biglycan/BGN and fibronectin/FN1. Inhibits signaling mediated by TGF- beta family proteins possibly indirectly by degradation of these ECM proteoglycans (By similarity). May act as a tumor suppressor. Negatively regulates, in vitro, trophoblast invasion during placental development and may be involved in the development of the placenta in vivo. May also have a role in ovarian development, granulosa cell differentiation and luteinization (PubMed:21321049, PubMed:22229724).

Cellular Location

Secreted. Note=Secretion increased during decidualization of endometrial stromal cells

Tissue Location

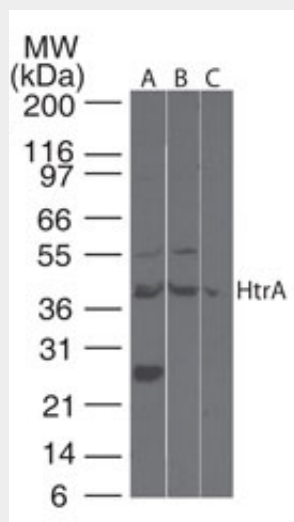
Widely expressed, with highest levels in both adult and fetal heart, ovary, uterus placenta, and bladder. In the endometrium, expressed in epithelial glands and the stroma. Also present in leukocytes. Isoform 1 is predominant in heart and skeletal muscle, whereas isoform 2 is predominant in placenta and kidney

HTRA3 Antibody (aa250-300) - Protocols

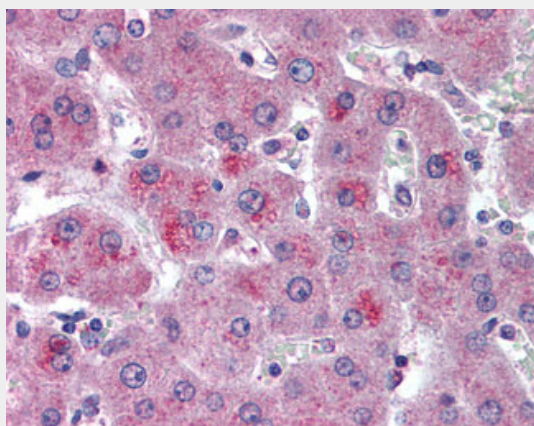
Provided below are standard protocols that you may find useful for product applications.

- [Western Blot](#)
- [Blocking Peptides](#)
- [Dot Blot](#)
- [Immunohistochemistry](#)
- [Immunofluorescence](#)
- [Immunoprecipitation](#)
- [Flow Cytometry](#)
- [Cell Culture](#)

HTRA3 Antibody (aa250-300) - Images



Western blot of HtrA3 in rat heart lysate using antibody at 2 ug/ml.



Anti-HTRA3 antibody IHC of human liver.

HTRA3 Antibody (aa250-300) - Background

Serine protease that cleaves beta-casein/CSN2 as well as several extracellular matrix (ECM) proteoglycans such as decorin/DCN, biglycan/BGN and fibronectin/FN1. Inhibits signaling mediated by TGF-beta family proteins possibly indirectly by degradation of these ECM proteoglycans (By similarity). May act as a tumor suppressor. Negatively regulates, in vitro, trophoblast invasion during placental development and may be involved in the development of the placenta in vivo. May also have a role in ovarian development, granulosa cell differentiation and luteinization.

HTRA3 Antibody (aa250-300) - References

Nie G.-Y.,et al.Biochem. J. 371:39-48(2003).
Southan C.,et al.Submitted (JUN-2002) to the EMBL/GenBank/DDBJ databases.
Hillier L.W.,et al.Nature 434:724-731(2005).
Bowden M.A.,et al.Gynecol. Oncol. 103:253-260(2006).
Narkiewicz J.,et al.Oncol. Rep. 21:1529-1537(2009).