

**OLFM4 / Olfactomedin 4 Antibody (aa400-450)**  
**Rabbit Polyclonal Antibody**  
**Catalog # ALS12097****Specification**

---

**OLFM4 / Olfactomedin 4 Antibody (aa400-450) - Product Information**

Application	IHC, WB
Primary Accession	<a href="#">Q6UX06</a>
Reactivity	Human
Host	Rabbit
Clonality	Polyclonal
Calculated MW	57kDa KDa

**OLFM4 / Olfactomedin 4 Antibody (aa400-450) - Additional Information****Gene ID** 10562**Other Names**

Olfactomedin-4, OLM4, Antiapoptotic protein GW112, G-CSF-stimulated clone 1 protein, hGC-1, hOLfD, OLFM4, GW112

**Target/Specificity**

A portion of amino acids 400-450 of human Olfactomedin 4

**Reconstitution & Storage**

Long term: -20°C; Short term: -20°C

**Precautions**

OLFM4 / Olfactomedin 4 Antibody (aa400-450) is for research use only and not for use in diagnostic or therapeutic procedures.

**OLFM4 / Olfactomedin 4 Antibody (aa400-450) - Protein Information****Name** OLFM4**Synonyms** GW112**Function**

May promote proliferation of pancreatic cancer cells by favoring the transition from the S to G2/M phase. In myeloid leukemic cell lines, inhibits cell growth and induces cell differentiation and apoptosis. May play a role in the inhibition of EIF4EBP1 phosphorylation/deactivation. Facilitates cell adhesion, most probably through interaction with cell surface lectins and cadherin.

**Cellular Location**

Secreted, extracellular space. Mitochondrion. Note=Subcellular location is not clearly defined: has been shown to be secreted (PubMed:16566923), but also in the mitochondrion (PubMed:15059901, PubMed:20724538), cytoplasm and plasma membrane (PubMed:20724538) and in the nucleus (PubMed:15059901)

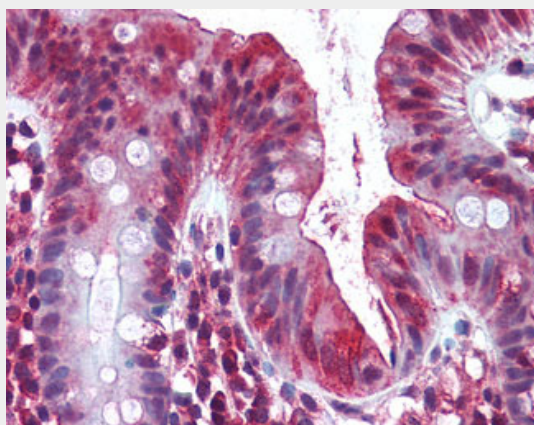
**Tissue Location**

Expressed during myeloid lineage development. Much higher expression in bone marrow neutrophils than in peripheral blood neutrophils (at protein level). Strongly expressed in the prostate, small intestine and colon and moderately expressed in the bone marrow and stomach. Overexpressed in some pancreatic cancer tissues

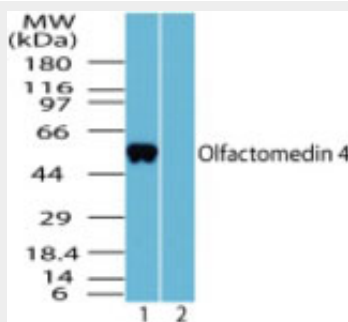
**OLFM4 / Olfactomedin 4 Antibody (aa400-450) - Protocols**

Provided below are standard protocols that you may find useful for product applications.

- [Western Blot](#)
- [Blocking Peptides](#)
- [Dot Blot](#)
- [Immunohistochemistry](#)
- [Immunofluorescence](#)
- [Immunoprecipitation](#)
- [Flow Cytometry](#)
- [Cell Culture](#)

**OLFM4 / Olfactomedin 4 Antibody (aa400-450) - Images**

Anti-OLFM4 antibody IHC of human colon.



Western blot of human Olfactomedin 4 in human liver lysate in the 1) absence and 2) presence of...

**OLFM4 / Olfactomedin 4 Antibody (aa400-450) - Background**

May promote proliferation of pancreatic cancer cells by favoring the transition from the S to G2/M phase. In myeloid leukemic cell lines, inhibits cell growth and induces cell differentiation and

apoptosis. May play a role in the inhibition of EIF4EBP1 phosphorylation/deactivation. Facilitates cell adhesion, most probably through interaction with cell surface lectins and cadherin.

#### **OLFM4 / Olfactomedin 4 Antibody (aa400-450) - References**

Clark H.F., et al. Genome Res. 13:2265-2270(2003).

Dunham A., et al. Nature 428:522-528(2004).

Mural R.J., et al. Submitted (JUL-2005) to the EMBL/GenBank/DDBJ databases.

Zhang J., et al. Gene 283:83-93(2002).

Zhang X., et al. Cancer Res. 64:2474-2481(2004).