

ARL6 Antibody (N-Terminus)
Rabbit Polyclonal Antibody
Catalog # ALS12151**Specification**

ARL6 Antibody (N-Terminus) - Product Information

Application	IHC
Primary Accession	Q9H0F7
Reactivity	Human
Host	Rabbit
Clonality	Polyclonal
Calculated MW	21kDa KDa

ARL6 Antibody (N-Terminus) - Additional Information**Gene ID** 84100**Other Names**

ADP-ribosylation factor-like protein 6, Bardet-Biedl syndrome 3 protein, ARL6, BBS3

Target/Specificity

Synthetic peptide corresponding to N-terminal residues of human ARL6 (ADP-ribosylation factor-like protein 6).

Reconstitution & Storage

+4°C or -20°C, Avoid repeated freezing and thawing.

Precautions

ARL6 Antibody (N-Terminus) is for research use only and not for use in diagnostic or therapeutic procedures.

ARL6 Antibody (N-Terminus) - Protein Information**Name** ARL6**Synonyms** BBS3**Function**

Involved in membrane protein trafficking at the base of the ciliary organelle. Mediates recruitment onto plasma membrane of the BBSome complex which would constitute a coat complex required for sorting of specific membrane proteins to the primary cilia (PubMed: [20603001](http://www.uniprot.org/citations/20603001)). Together with BBS1, is necessary for correct trafficking of PKD1 to primary cilia (By similarity). Together with the BBSome complex and LTZL1, controls SMO ciliary trafficking and contributes to the sonic hedgehog (SHH) pathway regulation (PubMed: [22072986](http://www.uniprot.org/citations/22072986)). May regulate cilia assembly and disassembly and subsequent ciliary signaling events such as the Wnt signaling cascade (PubMed: [20207729](http://www.uniprot.org/citations/20207729))

target="_blank">20207729). Isoform 2 may be required for proper retinal function and organization (By similarity).

Cellular Location

Cell projection, cilium membrane; Peripheral membrane protein; Cytoplasmic side. Cytoplasm, cytoskeleton, cilium axoneme. Cytoplasm, cytoskeleton, cilium basal body. Note=Appears in a pattern of punctae flanking the microtubule axoneme that likely correspond to small membrane-associated patches. Localizes to the so- called ciliary gate where vesicles carrying ciliary cargo fuse with the membrane

Volume

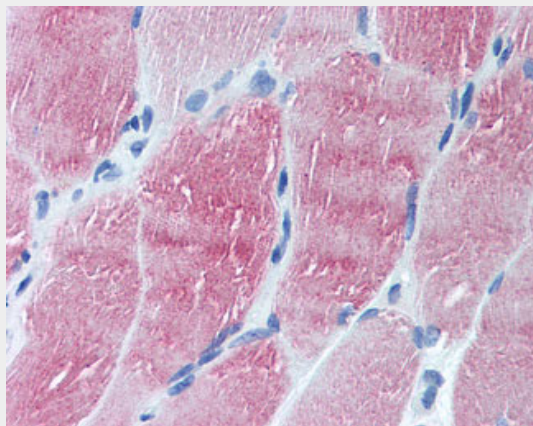
125 µl

ARL6 Antibody (N-Terminus) - Protocols

Provided below are standard protocols that you may find useful for product applications.

- [Western Blot](#)
- [Blocking Peptides](#)
- [Dot Blot](#)
- [Immunohistochemistry](#)
- [Immunofluorescence](#)
- [Immunoprecipitation](#)
- [Flow Cytometry](#)
- [Cell Culture](#)

ARL6 Antibody (N-Terminus) - Images



Anti-ARL6 antibody IHC of human skeletal muscle.

ARL6 Antibody (N-Terminus) - Background

Involved in membrane protein trafficking at the base of the ciliary organelle. Mediates recruitment onto plasma membrane of the BBSome complex which would constitute a coat complex required for sorting of specific membrane proteins to the primary cilia (PubMed:20603001). Together with BBS1, is necessary for correct trafficking of PKD1 to primary cilia (By similarity). Together with the BBSome complex and LTZL1, controls SMO ciliary trafficking and contributes to the sonic hedgehog (SHH) pathway regulation (PubMed:22072986). May regulate cilia assembly and disassembly and subsequent ciliary signaling events such as the Wnt signaling cascade (PubMed:20207729). Isoform 2 may be required for proper retinal function and organization (By similarity).

ARL6 Antibody (N-Terminus) - References

Wiemann S.,et al.Genome Res. 11:422-435(2001).
Ota T.,et al.Nat. Genet. 36:40-45(2004).
Muzny D.M.,et al.Nature 440:1194-1198(2006).
Mural R.J.,et al.Submitted (SEP-2005) to the EMBL/GenBank/DDBJ databases.
Chiang A.P.,et al.Am. J. Hum. Genet. 75:475-484(2004).