

**Endostatin Antibody**  
**Mouse Monoclonal Antibody**  
**Catalog # ALS12175****Specification**

---

**Endostatin Antibody - Product Information**

Application	WB, IHC-P
Primary Accession	<a href="#">P39060</a>
Reactivity	Human, Mouse, Rat
Host	Mouse
Clonality	Monoclonal
Calculated MW	178kDa KDa
Dilution	WB~~1:1000 IHC-P~~N/A

**Endostatin Antibody - Additional Information****Gene ID** 80781**Other Names**

Collagen alpha-1(XVIII) chain, Endostatin, COL18A1

**Target/Specificity**

Recognizes mouse endostatin, Mr 22kD, an unidentified protein is also weakly detected, Mr 54kD. Detects human protein in IHC-FFPE. It is predicted that the antibody will also detect the rat protein. Cross-reactivity is predicted based on sequence ho ...

**Reconstitution & Storage**

Long term: -20°C; Short term: +4°C. Avoid repeat freeze-thaw cycles.

**Precautions**

Endostatin Antibody is for research use only and not for use in diagnostic or therapeutic procedures.

**Endostatin Antibody - Protein Information****Name** COL18A1 ([HGNC:2195](#))**Function**

Probably plays a major role in determining the retinal structure as well as in the closure of the neural tube.

**Cellular Location**

Secreted, extracellular space, extracellular matrix. Secreted, extracellular space, extracellular matrix, basement membrane {ECO:0000250|UniProtKB:P39061} [Endostatin]: Secreted. Secreted, extracellular space, extracellular matrix, basement membrane

**Tissue Location**

Detected in placenta (at protein level) (PubMed:32337544). Present in multiple organs with highest levels in liver, lung and kidney.

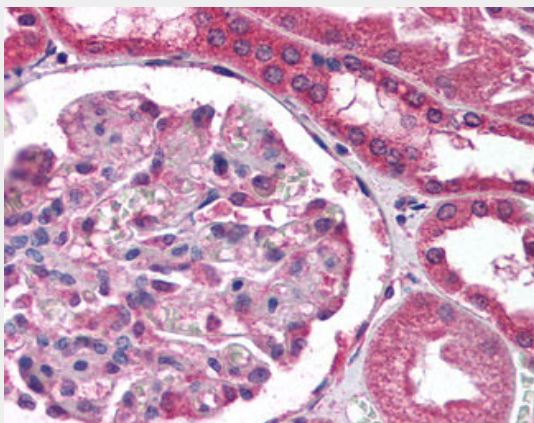
**Volume**

50  $\mu$ l

**Endostatin Antibody - Protocols**

Provided below are standard protocols that you may find useful for product applications.

- [Western Blot](#)
- [Blocking Peptides](#)
- [Dot Blot](#)
- [Immunohistochemistry](#)
- [Immunofluorescence](#)
- [Immunoprecipitation](#)
- [Flow Cytometry](#)
- [Cell Culture](#)

**Endostatin Antibody - Images**

Anti-COL18A1 / Endostatin antibody IHC of human kidney.

**Endostatin Antibody - Background**

COLA18A probably plays a major role in determining the retinal structure as well as in the closure of the neural tube.

**Endostatin Antibody - References**

- Saarela J.,et al.Matrix Biol. 16:319-328(1998).  
Elamaa H.,et al.Matrix Biol. 22:427-442(2003).  
Hattori M.,et al.Nature 405:311-319(2000).  
Oh S.P.,et al.Genomics 19:494-499(1994).  
Feng Y.,et al.Sheng Wu Gong Cheng Xue Bao 17:278-282(2001).