

CREB3L4 / AIBZIP Antibody (C-Terminus)
Goat Polyclonal Antibody
Catalog # ALS12189**Specification**

CREB3L4 / AIBZIP Antibody (C-Terminus) - Product Information

Application	WB, IHC-P, E
Primary Accession	Q8TEY5
Reactivity	Human
Host	Goat
Clonality	Polyclonal
Calculated MW	43kDa KDa
Dilution	WB~~1:1000 IHC-P~~N/A E~~N/A

CREB3L4 / AIBZIP Antibody (C-Terminus) - Additional Information**Gene ID** 148327**Other Names**

Cyclic AMP-responsive element-binding protein 3-like protein 4, cAMP-responsive element-binding protein 3-like protein 4, Androgen-induced basic leucine zipper protein, AibZIP, Attaching to CRE-like 1, ATCE1, Cyclic AMP-responsive element-binding protein 4, CREB-4, cAMP-responsive element-binding protein 4, Transcript induced in spermiogenesis protein 40, Tisp40, hJAL, Processed cyclic AMP-responsive element-binding protein 3-like protein 4, CREB3L4, AIBZIP, CREB4, JAL

Target/Specificity

Human CREB3L4.

Reconstitution & Storage

Store at -20°C. Minimize freezing and thawing.

Precautions

CREB3L4 / AIBZIP Antibody (C-Terminus) is for research use only and not for use in diagnostic or therapeutic procedures.

CREB3L4 / AIBZIP Antibody (C-Terminus) - Protein Information**Name** CREB3L4**Synonyms** AIBZIP, CREB4, JAL**Function**

Transcriptional activator that may play a role in the unfolded protein response. Binds to the UPR element (UPRE) but not to CRE element. Preferentially binds DNA with to the consensus sequence 5'-T[GT]ACGT[GA][GT]-3' and has transcriptional activation activity from UPRE. Binds to

NF-kappa-B site and has transcriptional activation activity from NF-kappa-B-containing regulatory elements (By similarity).

Cellular Location

Endoplasmic reticulum membrane; Single-pass type II membrane protein. Golgi apparatus membrane; Single- pass type II membrane protein. Note=May also be located in Golgi apparatus

Tissue Location

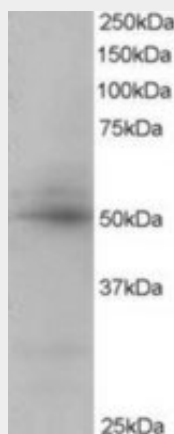
According to PubMed:11830526, exclusively expressed in the prostate. Expressed in breast and prostate cancer cell lines Expressed in prostatic luminal epithelial cells (at protein level) Expression is significantly more abundant in prostate cancer than in benign prostatic tissue (prostatic hyperplasia). According to PubMed:12111373, also expressed in brain, pancreas and skeletal muscle, and at lower levels in small intestine, testis, leukocyte and thymus

CREB3L4 / AIBZIP Antibody (C-Terminus) - Protocols

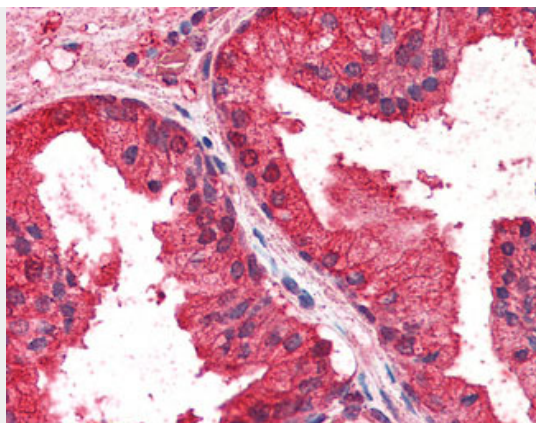
Provided below are standard protocols that you may find useful for product applications.

- [Western Blot](#)
- [Blocking Peptides](#)
- [Dot Blot](#)
- [Immunohistochemistry](#)
- [Immunofluorescence](#)
- [Immunoprecipitation](#)
- [Flow Cytometry](#)
- [Cell Culture](#)

CREB3L4 / AIBZIP Antibody (C-Terminus) - Images



Antibody staining (0.5 ug/ml) of Human Placenta lysate (RIPA buffer, 35 ug total protein per lane).



Anti-CREB3L4 antibody IHC of human prostate.

CREB3L4 / AIBZIP Antibody (C-Terminus) - Background

Transcriptional activator that may play a role in the unfolded protein response. Binds to the UPR element (UPRE) but not to CRE element. Preferentially binds DNA with to the consensus sequence 5'-T[GT]ACGT[GA][GT]-3' and has transcriptional activation activity from UPRE. Binds to NF-kappa-B site and has transcriptional activation activity from NF-kappa-B-containing regulatory elements (By similarity).

CREB3L4 / AIBZIP Antibody (C-Terminus) - References

- Qi H.,et al.Cancer Res. 62:721-733(2002).
- Cao G.,et al.J. Hum. Genet. 47:373-376(2002).
- Fujita K.,et al.Submitted (DEC-2000) to the EMBL/GenBank/DDBJ databases.
- Guo J.H.,et al.Submitted (AUG-2001) to the EMBL/GenBank/DDBJ databases.
- Ota T.,et al.Nat. Genet. 36:40-45(2004).