

IFT74 / CCDC2 Antibody (C-Terminus)
Goat Polyclonal Antibody
Catalog # ALS12205**Specification**

IFT74 / CCDC2 Antibody (C-Terminus) - Product Information

Application	IHC
Primary Accession	O96LB3
Reactivity	Human, Monkey
Host	Goat
Clonality	Polyclonal
Calculated MW	69kDa KDa

IFT74 / CCDC2 Antibody (C-Terminus) - Additional Information**Gene ID** 80173**Other Names**

Intraflagellar transport protein 74 homolog, Capillary morphogenesis gene 1 protein, CMG-1, Coiled-coil domain-containing protein 2, IFT74, CCDC2, CMG1

Target/Specificity

Human IFT74.

Reconstitution & Storage

Store at -20°C. Minimize freezing and thawing.

Precautions

IFT74 / CCDC2 Antibody (C-Terminus) is for research use only and not for use in diagnostic or therapeutic procedures.

IFT74 / CCDC2 Antibody (C-Terminus) - Protein Information**Name** IFT74**Synonyms** CCDC2, CMG1**Function**

Component of the intraflagellar transport (IFT) complex B: together with IFT81, forms a tubulin-binding module that specifically mediates transport of tubulin within the cilium (PubMed: [23990561](http://www.uniprot.org/citations/23990561)). Binds beta-tubulin via its basic region (PubMed: [23990561](http://www.uniprot.org/citations/23990561)). Required for ciliogenesis (PubMed: [23990561](http://www.uniprot.org/citations/23990561)). Essential for flagellogenesis during spermatogenesis (PubMed: [33689014](http://www.uniprot.org/citations/33689014)).

Cellular Location

Cell projection, cilium. Cytoplasmic vesicle. Cell projection, cilium, flagellum. Cytoplasmic vesicle, secretory vesicle, acrosome {ECO:0000250|UniProtKB:Q8BKE9}. Note=Localizes along primary cilia at interphase and around the basal body/centriole at interphase and mitosis (PubMed:15024030). In male germ cells, strongly expressed in the vesicles of spermatocytes and round spermatids and also in the acrosome and centrosome regions of elongating spermatids and in developing sperm tails (By similarity). {ECO:0000250|UniProtKB:Q8BKE9, ECO:0000269|PubMed:15024030}

Tissue Location

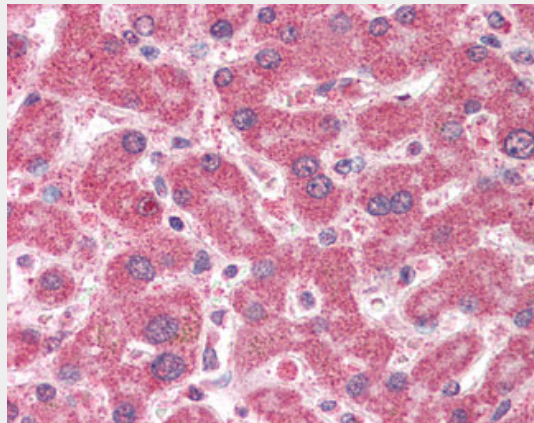
Highly expressed in adult and fetal kidney and expressed at lower level in adult heart, placenta, lung, liver and pancreas, and in fetal heart, lung and liver. Little to no expression was detected in adult brain and skeletal muscle or in fetal brain, thymus and spleen (PubMed:11683410). Detected in sperm (at protein level) (PubMed:33689014).

IFT74 / CCDC2 Antibody (C-Terminus) - Protocols

Provided below are standard protocols that you may find useful for product applications.

- [Western Blot](#)
- [Blocking Peptides](#)
- [Dot Blot](#)
- [Immunohistochemistry](#)
- [Immunofluorescence](#)
- [Immunoprecipitation](#)
- [Flow Cytometry](#)
- [Cell Culture](#)

IFT74 / CCDC2 Antibody (C-Terminus) - Images



Anti-IFT74 antibody IHC of human liver.

IFT74 / CCDC2 Antibody (C-Terminus) - Background

Component of the intraflagellar transport (IFT) complex B: together with IFT81, forms a tubulin-binding module that specifically mediates transport of tubulin within the cilium. Binds beta-tubulin via its basic region. Required for ciliogenesis.

IFT74 / CCDC2 Antibody (C-Terminus) - References

Bell S.E., et al. J. Cell Sci. 114:2755-2773(2001).
Ota T., et al. Nat. Genet. 36:40-45(2004).

Humphray S.J.,et al.Nature 429:369-374(2004).

Mural R.J.,et al.Submitted (SEP-2005) to the EMBL/GenBank/DDBJ databases.

Li W.B.,et al.Submitted (APR-2003) to the EMBL/GenBank/DDBJ databases.