

EXOC7 Antibody (Internal)
Goat Polyclonal Antibody
Catalog # ALS12208**Specification**

EXOC7 Antibody (Internal) - Product Information

Application	WB, IHC
Primary Accession	Q9UPT5
Reactivity	Human, Mouse, Rat, Monkey, Pig, Chicken, Horse, Bovine, Dog
Host	Goat
Clonality	Polyclonal
Calculated MW	83kDa KDa

EXOC7 Antibody (Internal) - Additional Information**Gene ID** 23265**Other Names**

Exocyst complex component 7, Exocyst complex component Exo70, EXOC7, EXO70, KIAA1067

Target/Specificity

Human EXOC7. This antibody is expected to recognise all five reported isoforms (NP_001013861.1; NP_056034.2; NP_001138769.1; NP_001138771.1; NP_001138770.1).

Reconstitution & Storage

Store at -20°C. Minimize freezing and thawing.

Precautions

EXOC7 Antibody (Internal) is for research use only and not for use in diagnostic or therapeutic procedures.

EXOC7 Antibody (Internal) - Protein Information**Name** EXOC7**Synonyms** EXO70, KIAA1067**Function**

Component of the exocyst complex involved in the docking of exocytic vesicles with fusion sites on the plasma membrane. In adipocytes, plays a crucial role in targeting SLC2A4 vesicle to the plasma membrane in response to insulin, perhaps directing the vesicle to the precise site of fusion (By similarity). It is required for neuron survival and plays an essential role in cortical development (By similarity).

Cellular Location

Cytoplasm, cytosol {ECO:0000250|UniProtKB:O35250}. Cell membrane {ECO:0000250|UniProtKB:O35250}; Peripheral membrane protein. Midbody, Midbody ring

Note=Translocates, as a preformed complex with EXOC3/SEC6 and EXOC4/SEC8, to the plasma membrane in response to insulin through the activation of ARHQ (By similarity). Colocalizes with CNTRL/centriolin at the midbody ring (PubMed:16213214). {ECO:0000250|UniProtKB:O35250, ECO:0000269|PubMed:16213214}

Tissue Location

Abundant in the ventricular zone, the outer subventricular zone and the cortical plate of the fetal cortex

EXOC7 Antibody (Internal) - Protocols

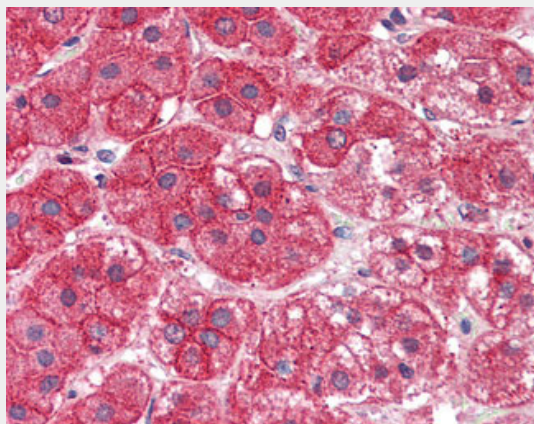
Provided below are standard protocols that you may find useful for product applications.

- [Western Blot](#)
- [Blocking Peptides](#)
- [Dot Blot](#)
- [Immunohistochemistry](#)
- [Immunofluorescence](#)
- [Immunoprecipitation](#)
- [Flow Cytometry](#)
- [Cell Culture](#)

EXOC7 Antibody (Internal) - Images



Antibody (0.5 ug/ml) staining of Human Lung lysate (35 ug protein in RIPA buffer).



Anti-EXOC7 antibody IHC of human adrenal.

EXOC7 Antibody (Internal) - Background

Component of the exocyst complex involved in the docking of exocytic vesicles with fusion sites on the plasma membrane. In adipocytes, plays a crucial role in targeting SLC2A4 vesicle to the plasma membrane in response to insulin, perhaps directing the vesicle to the precise site of fusion (By similarity).

EXOC7 Antibody (Internal) - References

Dellago H.,et al.Submitted (NOV-2008) to the EMBL/GenBank/DDBJ databases.
Kikuno R.,et al.DNA Res. 6:197-205(1999).
Ota T.,et al.Nat. Genet. 36:40-45(2004).
Bechtel S.,et al.BMC Genomics 8:399-399(2007).
Zody M.C.,et al.Nature 440:1045-1049(2006).