

LRP1 / CD91 Antibody
Mouse Monoclonal Antibody
Catalog # ALS12225**Specification**

LRP1 / CD91 Antibody - Product Information

Application	IHC
Primary Accession	Q07954
Reactivity	Human
Host	Mouse
Clonality	Monoclonal
Calculated MW	505kDa KDa

LRP1 / CD91 Antibody - Additional Information**Gene ID** 4035**Other Names**

Prolow-density lipoprotein receptor-related protein 1, LRP-1, Alpha-2-macroglobulin receptor, A2MR, Apolipoprotein E receptor, APOER, CD91, Low-density lipoprotein receptor-related protein 1 85 kDa subunit, LRP-85, Low-density lipoprotein receptor-related protein 1 515 kDa subunit, LRP-515, Low-density lipoprotein receptor-related protein 1 intracellular domain, LRPICD, LRP1, A2MR, APR

Target/Specificity

Recognizes human CD91, a type I membrane protein which is also known as the alpha 2 macroglobulin receptor (alpha 2 MR). Recognizes an epitope in the extracellular region of the 500kD alpha chain.

Reconstitution & Storage

Long term: Add glycerol (40-50%) -20°C; Short term: +4°C

Precautions

LRP1 / CD91 Antibody is for research use only and not for use in diagnostic or therapeutic procedures.

LRP1 / CD91 Antibody - Protein Information**Name** LRP1 ([HGNC:6692](#))**Synonyms** A2MR, APR**Function**

Endocytic receptor involved in endocytosis and in phagocytosis of apoptotic cells (PubMed:11907044, PubMed:12713657). Required for early embryonic development (By similarity). Involved in cellular lipid homeostasis. Involved in the plasma clearance of chylomicron remnants and activated LRPAP1 (alpha 2-macroglobulin), as well

as the local metabolism of complexes between plasminogen activators and their endogenous inhibitors. Acts as an LRPAP1 alpha-2- macroglobulin receptor (PubMed:26142438, PubMed:1702392). Acts as TAU/MAPT receptor and controls the endocytosis of TAU/MAPT as well as its subsequent spread (PubMed:32296178). May modulate cellular events, such as APP metabolism, kinase-dependent intracellular signaling, neuronal calcium signaling as well as neurotransmission (PubMed:12888553).

Cellular Location

[Low-density lipoprotein receptor-related protein 1 85 kDa subunit]: Cell membrane; Single-pass type I membrane protein Membrane, coated pit [Low-density lipoprotein receptor-related protein 1 intracellular domain]: Cytoplasm Nucleus. Note=After cleavage, the intracellular domain (LRPICD) is detected both in the cytoplasm and in the nucleus.

Tissue Location

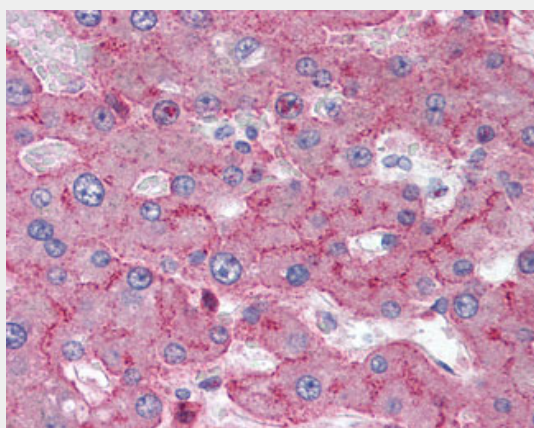
Most abundant in liver, brain and lung.

LRP1 / CD91 Antibody - Protocols

Provided below are standard protocols that you may find useful for product applications.

- [Western Blot](#)
- [Blocking Peptides](#)
- [Dot Blot](#)
- [Immunohistochemistry](#)
- [Immunofluorescence](#)
- [Immunoprecipitation](#)
- [Flow Cytometry](#)
- [Cell Culture](#)

LRP1 / CD91 Antibody - Images



Anti-LRP1 / Low Density LRP antibody IHC of human liver.

LRP1 / CD91 Antibody - Background

Endocytic receptor involved in endocytosis and in phagocytosis of apoptotic cells. Required for early embryonic development. Involved in cellular lipid homeostasis. Involved in the plasma clearance of chylomicron remnants and activated LRPAP1 (alpha 2-macroglobulin), as well as the

local metabolism of complexes between plasminogen activators and their endogenous inhibitors. May modulate cellular events, such as APP metabolism, kinase-dependent intracellular signaling, neuronal calcium signaling as well as neurotransmission.

LRP1 / CD91 Antibody - References

Herz J.,et al.EMBO J. 7:4119-4127(1988).
Van Leuven F.,et al.Genomics 24:78-89(1994).
Van Leuven F.,et al.Genomics 52:138-144(1998).
Scherer S.E.,et al.Nature 440:346-351(2006).
Kutt H.,et al.Biochim. Biophys. Acta 1009:229-236(1989).