

**CBX5 / HP1 Alpha Antibody (Internal)**  
**Goat Polyclonal Antibody**  
**Catalog # ALS12244****Specification**

---

**CBX5 / HP1 Alpha Antibody (Internal) - Product Information**

Application	IHC
Primary Accession	<a href="#">P45973</a>
Reactivity	Human, Monkey, Pig, Sheep, Horse, Bovine
Host	Goat
Clonality	Polyclonal
Calculated MW	22kDa KDa

**CBX5 / HP1 Alpha Antibody (Internal) - Additional Information****Gene ID** 23468**Other Names**

Chromobox protein homolog 5, Antigen p25, Heterochromatin protein 1 homolog alpha, HP1 alpha, CBX5, HP1A

**Target/Specificity**

Human CBX5 / HP1. Variants (NP\_036249.1; NP\_001120793.1; NP\_001120794.1) encode the same protein.

**Reconstitution & Storage**

Store at -20°C. Minimize freezing and thawing.

**Precautions**

CBX5 / HP1 Alpha Antibody (Internal) is for research use only and not for use in diagnostic or therapeutic procedures.

**CBX5 / HP1 Alpha Antibody (Internal) - Protein Information****Name** CBX5**Synonyms** HP1A**Function**

Component of heterochromatin that recognizes and binds histone H3 tails methylated at 'Lys-9' (H3K9me), leading to epigenetic repression. In contrast, it is excluded from chromatin when 'Tyr-41' of histone H3 is phosphorylated (H3Y41ph). Can interact with lamin-B receptor (LBR). This interaction can contribute to the association of the heterochromatin with the inner nuclear membrane. Involved in the formation of functional kinetochore through interaction with MIS12 complex proteins.

**Cellular Location**

Nucleus. Chromosome. Chromosome, centromere Note=Colocalizes with HNRNPU in the nucleus

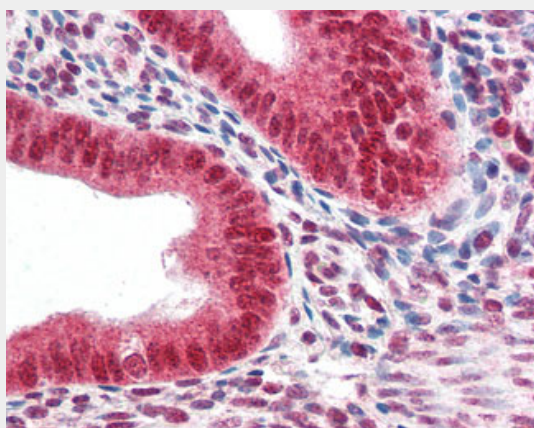
(PubMed:19617346) Component of centromeric and pericentromeric heterochromatin Associates with chromosomes during mitosis. Associates specifically with chromatin during metaphase and anaphase (PubMed:19617346) Localizes to sites of DNA damage (PubMed:28977666)

### **CBX5 / HP1 Alpha Antibody (Internal) - Protocols**

Provided below are standard protocols that you may find useful for product applications.

- [Western Blot](#)
- [Blocking Peptides](#)
- [Dot Blot](#)
- [Immunohistochemistry](#)
- [Immunofluorescence](#)
- [Immunoprecipitation](#)
- [Flow Cytometry](#)
- [Cell Culture](#)

### **CBX5 / HP1 Alpha Antibody (Internal) - Images**



Anti-CBX5 / HP1 antibody IHC of human uterus.

### **CBX5 / HP1 Alpha Antibody (Internal) - Background**

Component of heterochromatin that recognizes and binds histone H3 tails methylated at 'Lys-9' (H3K9me), leading to epigenetic repression. In contrast, it is excluded from chromatin when 'Tyr-41' of histone H3 is phosphorylated (H3Y41ph). Can interact with lamin-B receptor (LBR). This interaction can contribute to the association of the heterochromatin with the inner nuclear membrane. Involved in the formation of functional kinetochore through interaction with MIS12 complex proteins.

### **CBX5 / HP1 Alpha Antibody (Internal) - References**

Saunders W.S., et al. J. Cell Sci. 104:573-582(1993).  
Ota T., et al. Nat. Genet. 36:40-45(2004).  
Mural R.J., et al. Submitted (JUL-2005) to the EMBL/GenBank/DDBJ databases.  
Ye Q., et al. J. Biol. Chem. 271:14653-14656(1996).  
Lubec G., et al. Submitted (DEC-2008) to UniProtKB.