

CBX3 / HP1 Gamma Antibody (Internal)
Goat Polyclonal Antibody
Catalog # ALS12246**Specification**

CBX3 / HP1 Gamma Antibody (Internal) - Product Information

Application	IHC, WB
Primary Accession	Q13185
Reactivity	Human, Mouse, Rat, Rabbit, Hamster, Monkey, Pig, Horse, Bovine, Dog
Host	Goat
Clonality	Polyclonal
Calculated MW	21kDa KDa

CBX3 / HP1 Gamma Antibody (Internal) - Additional Information**Gene ID** 11335**Other Names**

Chromobox protein homolog 3, HECH, Heterochromatin protein 1 homolog gamma, HP1 gamma, Modifier 2 protein, CBX3

Target/Specificity

Human CBX3. No cross-reactivity expected with HP1-alpha and HP1-beta. NP_009207.2 and NP_057671.2 represent same protein.

Reconstitution & Storage

Store at -20°C. Minimize freezing and thawing.

Precautions

CBX3 / HP1 Gamma Antibody (Internal) is for research use only and not for use in diagnostic or therapeutic procedures.

CBX3 / HP1 Gamma Antibody (Internal) - Protein Information**Name** CBX3**Function**

Seems to be involved in transcriptional silencing in heterochromatin-like complexes. Recognizes and binds histone H3 tails methylated at 'Lys-9', leading to epigenetic repression. May contribute to the association of the heterochromatin with the inner nuclear membrane through its interaction with lamin B receptor (LBR). Involved in the formation of functional kinetochore through interaction with MIS12 complex proteins. Contributes to the conversion of local chromatin to a heterochromatin-like repressive state through H3 'Lys-9' trimethylation, mediates the recruitment of the methyltransferases SUV39H1 and/or SUV39H2 by the PER complex to the E-box elements of the circadian target genes such as PER2 itself or PER1. Mediates the recruitment of NIPBL to sites of DNA damage at double-strand breaks (DSBs) (PubMed:28167679).

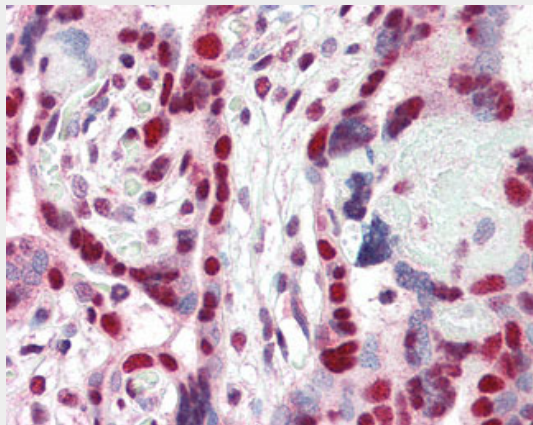
Cellular Location

Nucleus. Note=Associates with euchromatin and is largely excluded from constitutive heterochromatin. May be associated with microtubules and mitotic poles during mitosis (Potential).

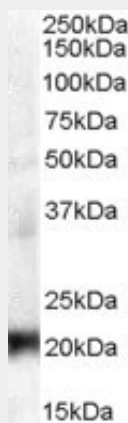
CBX3 / HP1 Gamma Antibody (Internal) - Protocols

Provided below are standard protocols that you may find useful for product applications.

- [Western Blot](#)
- [Blocking Peptides](#)
- [Dot Blot](#)
- [Immunohistochemistry](#)
- [Immunofluorescence](#)
- [Immunoprecipitation](#)
- [Flow Cytometry](#)
- [Cell Culture](#)

CBX3 / HP1 Gamma Antibody (Internal) - Images

Anti-CBX3 antibody IHC of human placenta.



(0.3 ug/ml) Staining of A431 lysate (35 ug protein in RIPA buffer).

CBX3 / HP1 Gamma Antibody (Internal) - Background

Seems to be involved in transcriptional silencing in heterochromatin-like complexes. Recognizes and binds histone H3 tails methylated at 'Lys-9', leading to epigenetic repression. May contribute to

the association of the heterochromatin with the inner nuclear membrane through its interaction with lamin B receptor (LBR). Involved in the formation of functional kinetochore through interaction with MIS12 complex proteins. Contributes to the conversion of local chromatin to a heterochromatin-like repressive state through H3 'Lys-9' trimethylation, mediates the recruitment of the methyltransferases SUV39H1 and/or SUV39H2 by the PER complex to the E-box elements of the circadian target genes such as PER2 itself or PER1.

CBX3 / HP1 Gamma Antibody (Internal) - References

Ye Q., et al. J. Biol. Chem. 271:14653-14656(1996).
Ye Q., et al. Submitted (JAN-1997) to the EMBL/GenBank/DDBJ databases.
Koike N., et al. FEBS Lett. 467:17-21(2000).
Chen J.H., et al. Submitted (MAR-1999) to the EMBL/GenBank/DDBJ databases.
Lubec G., et al. Submitted (MAR-2007) to UniProtKB.