

VPS25 Antibody (N-Terminus)
Rabbit Polyclonal Antibody
Catalog # ALS12256**Specification**

VPS25 Antibody (N-Terminus) - Product Information

Application	IHC
Primary Accession	Q9BRG1
Reactivity	Human
Host	Rabbit
Clonality	Polyclonal
Calculated MW	21kDa KDa

VPS25 Antibody (N-Terminus) - Additional Information**Gene ID** 84313**Other Names**

Vacuolar protein-sorting-associated protein 25, hVps25, Dermal papilla-derived protein 9, ELL-associated protein of 20 kDa, ESCRT-II complex subunit VPS25, VPS25, DERP9, EAP20

Target/Specificity

Synthetic peptide corresponding to N-terminal residues of human VPS25(Vacuolar protein sorting protein 25).

Reconstitution & Storage

+4°C or -20°C, Avoid repeated freezing and thawing.

Precautions

VPS25 Antibody (N-Terminus) is for research use only and not for use in diagnostic or therapeutic procedures.

VPS25 Antibody (N-Terminus) - Protein Information**Name** VPS25**Synonyms** DERP9, EAP20**Function**

Component of the ESCRT-II complex (endosomal sorting complex required for transport II), which is required for multivesicular body (MVB) formation and sorting of endosomal cargo proteins into MVBs. The MVB pathway mediates delivery of transmembrane proteins into the lumen of the lysosome for degradation. The ESCRT-II complex is probably involved in the recruitment of the ESCRT-III complex. The ESCRT-II complex may also play a role in transcription regulation, possibly via its interaction with ELL. The ESCRT-II complex may be involved in facilitating the budding of certain RNA viruses.

Cellular Location

Cytoplasm. Endosome membrane. Nucleus, nucleoplasm. Note=Distributes diffusely throughout the cytoplasm and nucleoplasm, but exhibits a punctate distribution on coexpression with CHMP6

Tissue Location

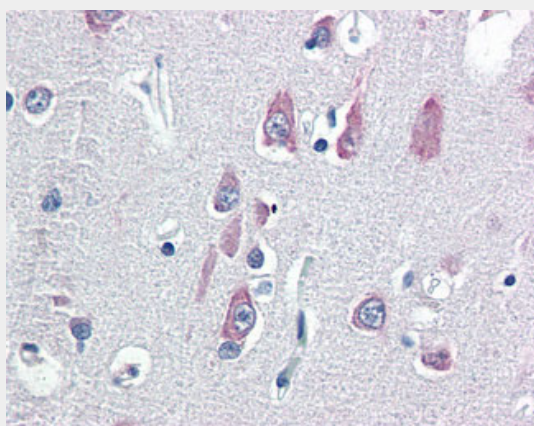
Expressed at the mRNA level in kidney, liver, pancreas, and placenta. Lower levels of expression are found in heart, skeletal muscle, brain and lung.

VPS25 Antibody (N-Terminus) - Protocols

Provided below are standard protocols that you may find useful for product applications.

- [Western Blot](#)
- [Blocking Peptides](#)
- [Dot Blot](#)
- [Immunohistochemistry](#)
- [Immunofluorescence](#)
- [Immunoprecipitation](#)
- [Flow Cytometry](#)
- [Cell Culture](#)

VPS25 Antibody (N-Terminus) - Images



Anti-VPS25 antibody IHC of human brain, cortex.

VPS25 Antibody (N-Terminus) - Background

Component of the ESCRT-II complex (endosomal sorting complex required for transport II), which is required for multivesicular body (MVB) formation and sorting of endosomal cargo proteins into MVBs. The MVB pathway mediates delivery of transmembrane proteins into the lumen of the lysosome for degradation. The ESCRT-II complex is probably involved in the recruitment of the ESCRT-III complex. The ESCRT-II complex may also play a role in transcription regulation, possibly via its interaction with ELL. The ESCRT-II complex may be involved in facilitating the budding of certain RNA viruses.

VPS25 Antibody (N-Terminus) - References

Ikeda A., et al. Submitted (MAY-1998) to the EMBL/GenBank/DDBJ databases.
Ota T., et al. Nat. Genet. 36:40-45(2004).
Mural R.J., et al. Submitted (JUL-2005) to the EMBL/GenBank/DDBJ databases.
von Schwedler U.K., et al. Cell 114:701-713(2003).

Martin-Serrano J., et al. Proc. Natl. Acad. Sci. U.S.A. 100:12414-12419(2003).