

CD34 Antibody (clone MEC14.7)
Rat Monoclonal Antibody
Catalog # ALS12262**Specification**

CD34 Antibody (clone MEC14.7) - Product Information

Application	IHC-P, IP, FC
Primary Accession	P28906
Reactivity	Human, Mouse
Host	Rat
Clonality	Monoclonal
Calculated MW	41kDa KDa
Dilution	IHC-P~~N/A IP~~N/A FC~~1:10~50

CD34 Antibody (clone MEC14.7) - Additional Information**Gene ID** 947**Other Names**

Hematopoietic progenitor cell antigen CD34, CD34, CD34

Target/Specificity

Recognizes the mouse CD34 cell surface glycoprotein. mouse CD34 is expressed by hematopoietic progenitor cells in the bone marrow and also by endothelial cells.

Reconstitution & Storage

Long term: -20°C; Short term: +4°C. Avoid repeat freeze-thaw cycles.

Precautions

CD34 Antibody (clone MEC14.7) is for research use only and not for use in diagnostic or therapeutic procedures.

CD34 Antibody (clone MEC14.7) - Protein Information**Name** CD34**Function**

Possible adhesion molecule with a role in early hematopoiesis by mediating the attachment of stem cells to the bone marrow extracellular matrix or directly to stromal cells. Could act as a scaffold for the attachment of lineage specific glycans, allowing stem cells to bind to lectins expressed by stromal cells or other marrow components. Presents carbohydrate ligands to selectins.

Cellular Location

Membrane; Single-pass type I membrane protein.

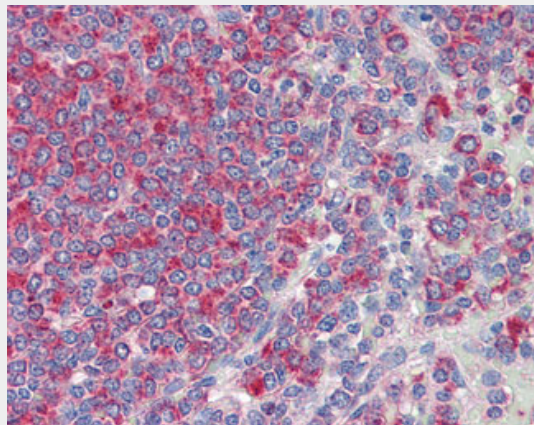
Tissue Location

Selectively expressed on hematopoietic progenitor cells and the small vessel endothelium of a variety of tissues

CD34 Antibody (clone MEC14.7) - Protocols

Provided below are standard protocols that you may find useful for product applications.

- [Western Blot](#)
- [Blocking Peptides](#)
- [Dot Blot](#)
- [Immunohistochemistry](#)
- [Immunofluorescence](#)
- [Immunoprecipitation](#)
- [Flow Cytometry](#)
- [Cell Culture](#)

CD34 Antibody (clone MEC14.7) - Images

Anti-CD34 antibody IHC of human spleen.

CD34 Antibody (clone MEC14.7) - Background

Possible adhesion molecule with a role in early hematopoiesis by mediating the attachment of stem cells to the bone marrow extracellular matrix or directly to stromal cells. Could act as a scaffold for the attachment of lineage specific glycans, allowing stem cells to bind to lectins expressed by stromal cells or other marrow components. Presents carbohydrate ligands to selectins.

CD34 Antibody (clone MEC14.7) - References

Simmons D.L., et al. J. Immunol. 148:267-271(1992).
Satterthwaite A.B., et al. Genomics 12:788-794(1992).
Nakamura Y., et al. Exp. Hematol. 21:236-242(1993).
Freund D., et al. Submitted (JUN-2002) to the EMBL/GenBank/DBJ databases.
Ota T., et al. Nat. Genet. 36:40-45(2004).