

TFEC Antibody (Internal)
Goat Polyclonal Antibody
Catalog # ALS12274**Specification**

TFEC Antibody (Internal) - Product Information

Application	IHC-P, E
Primary Accession	O14948
Reactivity	Human, Mouse
Host	Goat
Clonality	Polyclonal
Calculated MW	39kDa KDa
Dilution	IHC-P~~N/A E~~N/A

TFEC Antibody (Internal) - Additional Information**Gene ID** 22797**Other Names**

Transcription factor EC, TFE-C, Class E basic helix-loop-helix protein 34, bHLHe34, Transcription factor EC-like, hTFEC-L, TFEC, BHLHE34, TC FEC, TFECL

Target/Specificity

Mouse TFEC.

Reconstitution & Storage

Store at -20°C. Minimize freezing and thawing.

Precautions

TFEC Antibody (Internal) is for research use only and not for use in diagnostic or therapeutic procedures.

TFEC Antibody (Internal) - Protein Information**Name** TFEC**Synonyms** BHLHE34, TC FEC, TFECL**Function**

Transcriptional regulator that acts as a repressor or an activator. Acts as a transcriptional repressor on minimal promoter containing element F (that includes an E-box sequence). Binds to element F in an E-box sequence-specific manner. Acts as a transcriptional transactivator on the proximal promoter region of the tartrate-resistant acid phosphatase (TRAP) E-box containing promoter (By similarity). Collaborates with MITF in target gene activation (By similarity). Acts as a transcriptional repressor on minimal promoter containing mu E3 enhancer sequence (By similarity). Binds to mu E3 DNA sequence of the immunoglobulin heavy-chain gene enhancer (By similarity). Binds DNA in a homo- or heterodimeric form.

Cellular Location

Nucleus {ECO:0000255|PROSITE-ProRule:PRU00981, ECO:0000269|PubMed:11467950}

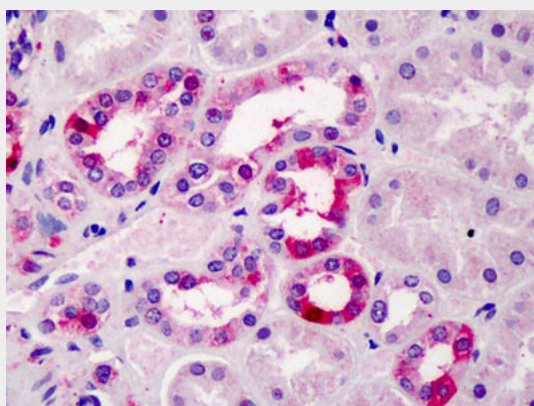
Tissue Location

Expressed moderately in spleen, kidney, bone marrow, small intestine and leukocytes. Expressed weakly in testis, trachea and colon.

TFEC Antibody (Internal) - Protocols

Provided below are standard protocols that you may find useful for product applications.

- [Western Blot](#)
- [Blocking Peptides](#)
- [Dot Blot](#)
- [Immunohistochemistry](#)
- [Immunofluorescence](#)
- [Immunoprecipitation](#)
- [Flow Cytometry](#)
- [Cell Culture](#)

TFEC Antibody (Internal) - Images

Anti-TFEC antibody IHC of human kidney.

TFEC Antibody (Internal) - Background

Transcriptional regulator that acts as a repressor or an activator. Acts as a transcriptional repressor on minimal promoter containing element F (that includes an E-box sequence). Binds to element F in an E-box sequence-specific manner. Acts as a transcriptional transactivator on the proximal promoter region of the tartrate-resistant acid phosphatase (TRAP) E-box containing promoter (By similarity). Collaborates with MITF in target gene activation (By similarity). Acts as a transcriptional repressor on minimal promoter containing mu E3 enhancer sequence (By similarity). Binds to mu E3 DNA sequence of the immunoglobulin heavy-chain gene enhancer (By similarity). Binds DNA in a homo- or heterodimeric form.

TFEC Antibody (Internal) - References

Yasumoto K.,et al.Biochim. Biophys. Acta 1353:23-31(1997).
Ota T.,et al.Nat. Genet. 36:40-45(2004).
Bechtel S.,et al.BMC Genomics 8:399-399(2007).
Scherer S.W.,et al.Science 300:767-772(2003).

Mural R.J.,et al.Submitted (JUN-2004) to the EMBL/GenBank/DDBJ databases.