

**TPSAB1 / Mast Cell Tryptase Antibody**  
**Mouse Monoclonal Antibody**  
**Catalog # ALS12280****Specification**

---

**TPSAB1 / Mast Cell Tryptase Antibody - Product Information**

Application	WB, IHC-P, E, IHC-F
Primary Accession	<a href="#">Q15661</a>
Reactivity	Human, Monkey, Dog, Cat
Host	Mouse
Clonality	Monoclonal
Calculated MW	31kDa KDa
Dilution	WB~~1:1000 IHC-P~~N/A E~~N/A IHC-F~~N/A

**TPSAB1 / Mast Cell Tryptase Antibody - Additional Information****Gene ID** 7177**Other Names**

Tryptase alpha/beta-1, Tryptase-1, 3.4.21.59, Tryptase I, Tryptase alpha-1, TPSAB1, TPS1, TPS2, TPSB1

**Target/Specificity**

Recognizes human mast cell tryptase, both alpha and beta isoforms. The antibody is an excellent marker for mast cells and does not bind to any other cell type in Immunohistochemistry. Species cross-reactivity: feline, canine and monkey.

**Reconstitution & Storage**

Long term: -20°C; Short term: +4°C. Avoid repeat freeze-thaw cycles.

**Precautions**

TPSAB1 / Mast Cell Tryptase Antibody is for research use only and not for use in diagnostic or therapeutic procedures.

**TPSAB1 / Mast Cell Tryptase Antibody - Protein Information****Name** TPSAB1**Synonyms** TPS1, TPS2, TPSB1**Function**

Tryptase is the major neutral protease present in mast cells and is secreted upon the coupled activation-degranulation response of this cell type. May play a role in innate immunity. Isoform 2 cleaves large substrates, such as fibronectin, more efficiently than isoform 1, but seems less efficient toward small substrates (PubMed:<a href="http://www.uniprot.org/citations/18854315"

target="\_blank">18854315</a>).

#### **Cellular Location**

Secreted. Note=Released from the secretory granules upon mast cell activation.

#### **Tissue Location**

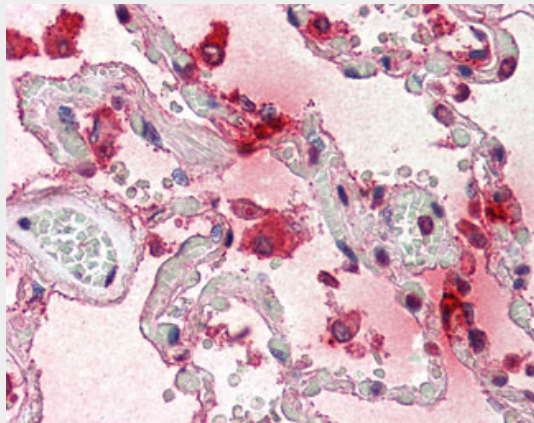
Isoform 1 and isoform 2 are expressed in lung, stomach, spleen, heart and skin; in these tissues, isoform 1 is predominant. Isoform 2 is expressed in aorta, spleen, and breast tumor, with highest levels in the endothelial cells of some blood vessels surrounding the aorta, as well as those surrounding the tumor and low levels, if any, in mast cells (at protein level)

### **TPSAB1 / Mast Cell Tryptase Antibody - Protocols**

Provided below are standard protocols that you may find useful for product applications.

- [Western Blot](#)
- [Blocking Peptides](#)
- [Dot Blot](#)
- [Immunohistochemistry](#)
- [Immunofluorescence](#)
- [Immunoprecipitation](#)
- [Flow Cytometry](#)
- [Cell Culture](#)

### **TPSAB1 / Mast Cell Tryptase Antibody - Images**



Anti-TPSAB1 / Mast Cell Tryptase antibody IHC of human lung.

### **TPSAB1 / Mast Cell Tryptase Antibody - Background**

Tryptase is the major neutral protease present in mast cells and is secreted upon the coupled activation-degranulation response of this cell type.

### **TPSAB1 / Mast Cell Tryptase Antibody - References**

Miller J.S.,et al.J. Clin. Invest. 84:1188-1195(1989).  
Schwartz L.B.,et al.Submitted (MAR-1990) to the EMBL/GenBank/DDBJ databases.  
Vanderslice P.,et al.Proc. Natl. Acad. Sci. U.S.A. 87:3811-3815(1990).  
Pallaoro M.,et al.J. Biol. Chem. 274:3355-3362(1999).  
Wang H.W.,et al.Submitted (NOV-1999) to the EMBL/GenBank/DDBJ databases.