

**SLIM / FHL1 Antibody (Internal)**  
**Goat Polyclonal Antibody**  
**Catalog # ALS12287****Specification**

---

**SLIM / FHL1 Antibody (Internal) - Product Information**

Application	IHC
Primary Accession	<a href="#">Q13642</a>
Reactivity	Human, Mouse, Rat, Hamster
Host	Goat
Clonality	Polyclonal
Calculated MW	36kDa KDa

**SLIM / FHL1 Antibody (Internal) - Additional Information****Gene ID** 2273**Other Names**

Four and a half LIM domains protein 1, FHL-1, Skeletal muscle LIM-protein 1, SLIM, SLIM-1, FHL1, SLIM1

**Target/Specificity**

Human FHL1. This antibody is expected to recognise isoforms 2( NP\_001440.1) and 5 (NP\_001153171.1). Since June 2009 the second N residue in the immunizing peptide is no longer representative as it has been substituted by Q at position 284 of NP\_00144 ...

**Reconstitution & Storage**

Store at -20°C. Minimize freezing and thawing.

**Precautions**

SLIM / FHL1 Antibody (Internal) is for research use only and not for use in diagnostic or therapeutic procedures.

**SLIM / FHL1 Antibody (Internal) - Protein Information****Name** FHL1**Synonyms** SLIM1**Function**

May have an involvement in muscle development or hypertrophy.

**Cellular Location**

[Isoform 1]: Cytoplasm. [Isoform 2]: Nucleus. Cytoplasm, cytosol. Note=Predominantly nuclear in myoblasts but is cytosolic in differentiated myotubes

**Tissue Location**

Isoform 1 is highly expressed in skeletal muscle and to a lesser extent in heart, placenta, ovary,

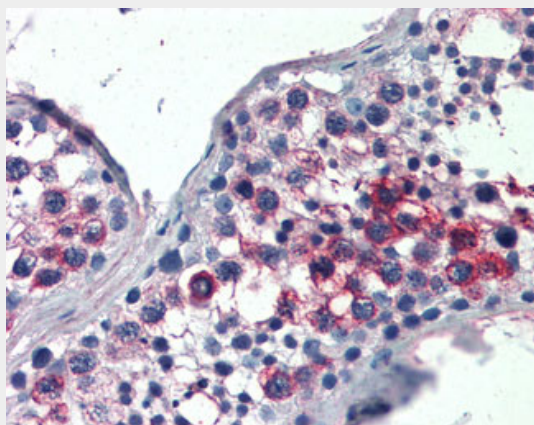
prostate, testis, small intestine, colon and spleen. Expression is barely detectable in brain, lung, liver, kidney, pancreas, thymus and peripheral blood leukocytes. Isoform 2 is expressed in brain, skeletal muscle and to a lesser extent in heart, colon, prostate and small intestine. Isoform 3 is expressed in testis, heart and skeletal muscle

### **SLIM / FHL1 Antibody (Internal) - Protocols**

Provided below are standard protocols that you may find useful for product applications.

- [Western Blot](#)
- [Blocking Peptides](#)
- [Dot Blot](#)
- [Immunohistochemistry](#)
- [Immunofluorescence](#)
- [Immunoprecipitation](#)
- [Flow Cytometry](#)
- [Cell Culture](#)

### **SLIM / FHL1 Antibody (Internal) - Images**



Anti-FHL1 antibody IHC of human testis.

### **SLIM / FHL1 Antibody (Internal) - Background**

May have an involvement in muscle development or hypertrophy.

### **SLIM / FHL1 Antibody (Internal) - References**

Morgan M.J., et al. Biochem. Biophys. Res. Commun. 225:632-638(1996).  
Morgan M.J., et al. Submitted (FEB-1998) to the EMBL/GenBank/DDBJ databases.  
Lee S.M.Y., et al. Gene 216:163-170(1998).  
Greene W.K., et al. Gene 232:203-207(1999).  
Lee S.M.Y., et al. Gene 237:253-263(1999).