

**TBC1D4 / AS160 Antibody (Internal)**  
**Goat Polyclonal Antibody**  
**Catalog # ALS12459****Specification**

---

**TBC1D4 / AS160 Antibody (Internal) - Product Information**

Application	IHC
Primary Accession	<a href="#">O60343</a>
Reactivity	Human
Host	Goat
Clonality	Polyclonal
Calculated MW	147kDa KDa

**TBC1D4 / AS160 Antibody (Internal) - Additional Information****Gene ID** 9882**Other Names**

TBC1 domain family member 4, Akt substrate of 160 kDa, AS160, TBC1D4, AS160, KIAA0603

**Target/Specificity**

Human TBC1D4.

**Reconstitution & Storage**

Store at -20°C. Minimize freezing and thawing.

**Precautions**

TBC1D4 / AS160 Antibody (Internal) is for research use only and not for use in diagnostic or therapeutic procedures.

**TBC1D4 / AS160 Antibody (Internal) - Protein Information****Name** TBC1D4**Synonyms** AS160, KIAA0603**Function**

May act as a GTPase-activating protein for RAB2A, RAB8A, RAB10 and RAB14. Isoform 2 promotes insulin-induced glucose transporter SLC2A4/GLUT4 translocation at the plasma membrane, thus increasing glucose uptake.

**Cellular Location**

Cytoplasm. Note=Isoform 2 shows a cytoplasmic perinuclear localization in a myoblastic cell line in resting and insulin-stimulated cells

**Tissue Location**

Widely expressed. Isoform 2 is the highest overexpressed in most tissues. Isoform 1 is highly expressed in skeletal muscle and heart, but was not detectable in the liver nor in adipose tissue.

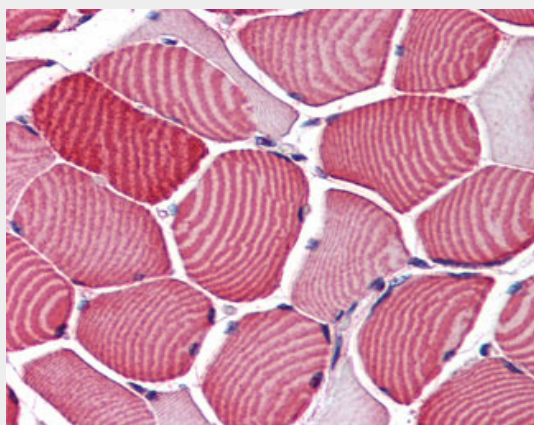
Isoform 2 is strongly expressed in adrenal and thyroid gland, and also in lung, kidney, colon, brain and adipose tissue. Isoform 2 is moderately expressed in skeletal muscle. Expressed in pancreatic Langerhans islets, including beta cells (at protein level). Expression is decreased by twofold in pancreatic islets in type 2 diabetes patients compared to control subjects. Up-regulated in T-cells from patients with atopic dermatitis.

#### **TBC1D4 / AS160 Antibody (Internal) - Protocols**

Provided below are standard protocols that you may find useful for product applications.

- [Western Blot](#)
- [Blocking Peptides](#)
- [Dot Blot](#)
- [Immunohistochemistry](#)
- [Immunofluorescence](#)
- [Immunoprecipitation](#)
- [Flow Cytometry](#)
- [Cell Culture](#)

#### **TBC1D4 / AS160 Antibody (Internal) - Images**



Anti-TBC1D4 antibody IHC of human skeletal muscle.

#### **TBC1D4 / AS160 Antibody (Internal) - Background**

May act as a GTPase-activating protein for RAB2A, RAB8A, RAB10 and RAB14. Isoform 2 promotes insulin-induced glucose transporter SLC2A4/GLUT4 translocation at the plasma membrane, thus increasing glucose uptake.

#### **TBC1D4 / AS160 Antibody (Internal) - References**

Baus D., et al. Cell. Signal. 20:2237-2246(2008).  
Ishibashi K., et al. Genes Cells 14:41-52(2009).  
Nagase T., et al. DNA Res. 5:31-39(1998).  
Ota T., et al. Nat. Genet. 36:40-45(2004).  
Dunham A., et al. Nature 428:522-528(2004).