

**PAG1 Antibody (C-Terminus, clone PAG-C1)**  
**Mouse Monoclonal Antibody**  
**Catalog # ALS12480**

**Specification**

---

**PAG1 Antibody (C-Terminus, clone PAG-C1) - Product Information**

Application	IHC
Primary Accession	<a href="#">O9NWO8</a>
Reactivity	Human, Mouse, Rat, Bovine
Host	Mouse
Clonality	Monoclonal
Calculated MW	47kDa KDa

**PAG1 Antibody (C-Terminus, clone PAG-C1) - Additional Information**

**Gene ID** 55824

**Other Names**

Phosphoprotein associated with glycosphingolipid-enriched microdomains 1, Csk-binding protein, Transmembrane adapter protein PAG, Transmembrane phosphoprotein Cbp, PAG1, CBP, PAG

**Target/Specificity**

Recognizes an epitope located in the C-terminal domain of Csk-binding protein (Cbp / PAG), a 46 kD ubiquitously expressed transmembrane adaptor protein present in membrane rafts (glycosphingolipid-enriched microdomains), which however migrates on SDS ...

**Reconstitution & Storage**

+4°C or -20°C, Avoid repeated freezing and thawing.

**Precautions**

PAG1 Antibody (C-Terminus, clone PAG-C1) is for research use only and not for use in diagnostic or therapeutic procedures.

**PAG1 Antibody (C-Terminus, clone PAG-C1) - Protein Information**

**Name** PAG1

**Synonyms** CBP, PAG

**Function**

Negatively regulates TCR (T-cell antigen receptor)-mediated signaling in T-cells and FCER1 (high affinity immunoglobulin epsilon receptor)-mediated signaling in mast cells. Promotes CSK activation and recruitment to lipid rafts, which results in LCK inhibition. Inhibits immunological synapse formation by preventing dynamic arrangement of lipid raft proteins. May be involved in cell adhesion signaling.

**Cellular Location**

Cell membrane; Single-pass type III membrane protein Note=Present in lipid rafts

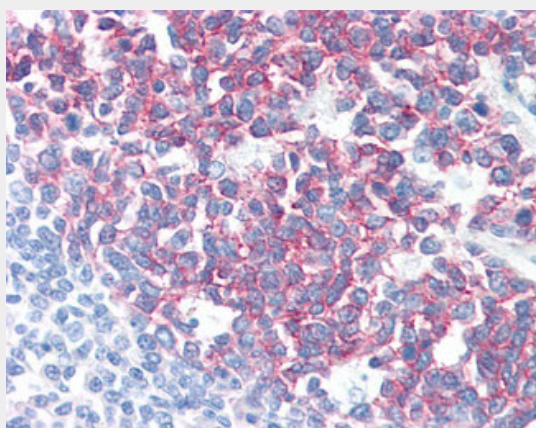
**Tissue Location**

Ubiquitously expressed. Present in germinal center B-cells, plasma cells, T-cells, monocytes and platelets (at protein level).

**PAG1 Antibody (C-Terminus, clone PAG-C1) - Protocols**

Provided below are standard protocols that you may find useful for product applications.

- [Western Blot](#)
- [Blocking Peptides](#)
- [Dot Blot](#)
- [Immunohistochemistry](#)
- [Immunofluorescence](#)
- [Immunoprecipitation](#)
- [Flow Cytometry](#)
- [Cell Culture](#)

**PAG1 Antibody (C-Terminus, clone PAG-C1) - Images**

Anti-PAG1 / PAG antibody IHC of human tonsil.

**PAG1 Antibody (C-Terminus, clone PAG-C1) - Background**

Negatively regulates TCR (T-cell antigen receptor)- mediated signaling in T-cells and FCER1 (high affinity immunoglobulin epsilon receptor)-mediated signaling in mast cells. Promotes CSK activation and recruitment to lipid rafts, which results in LCK inhibition. Inhibits immunological synapse formation by preventing dynamic arrangement of lipid raft proteins. May be involved in cell adhesion signaling.

**PAG1 Antibody (C-Terminus, clone PAG-C1) - References**

Brdicka T., et al. J. Exp. Med. 191:1591-1604(2000).  
Ota T., et al. Nat. Genet. 36:40-45(2004).  
Mural R.J., et al. Submitted (JUL-2005) to the EMBL/GenBank/DDBJ databases.  
Brdickova N., et al. FEBS Lett. 507:133-136(2001).  
Brill L.M., et al. Anal. Chem. 76:2763-2772(2004).