

CD68 Antibody (clone KP1)
Mouse Monoclonal Antibody
Catalog # ALS12508**Specification**

CD68 Antibody (clone KP1) - Product Information

Application	IHC
Primary Accession	P34810
Reactivity	Human, Rat, Monkey, Cat
Host	Mouse
Clonality	Monoclonal
Calculated MW	37kDa KDa

CD68 Antibody (clone KP1) - Additional Information**Gene ID** 968**Other Names**

Macrosialin, Gp110, CD68, CD68

Target/Specificity

Recognizes the human glycoprotein of 110kD, which is identified as CD68. Species cross-reactivity: Monkey, feline, rat. Does not react with porcine, canine, chicken.

Reconstitution & Storage

Long term: -20°C; Short term: +4°C. Avoid repeat freeze-thaw cycles.

Precautions

CD68 Antibody (clone KP1) is for research use only and not for use in diagnostic or therapeutic procedures.

CD68 Antibody (clone KP1) - Protein Information**Name** CD68**Function**

Could play a role in phagocytic activities of tissue macrophages, both in intracellular lysosomal metabolism and extracellular cell-cell and cell-pathogen interactions. Binds to tissue- and organ-specific lectins or selectins, allowing homing of macrophage subsets to particular sites. Rapid recirculation of CD68 from endosomes and lysosomes to the plasma membrane may allow macrophages to crawl over selectin-bearing substrates or other cells.

Cellular Location

[Isoform Short]: Cell membrane; Single-pass type I membrane protein

Tissue Location

Highly expressed by blood monocytes and tissue macrophages. Also expressed in lymphocytes, fibroblasts and endothelial cells. Expressed in many tumor cell lines which could allow them to

attach to selectins on vascular endothelium, facilitating their dissemination to secondary sites.

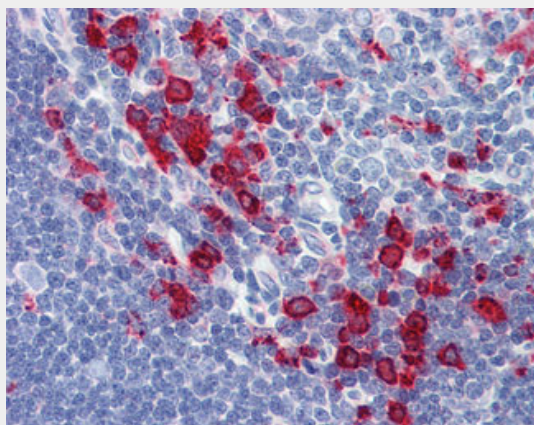
Volume
50 µl

CD68 Antibody (clone KP1) - Protocols

Provided below are standard protocols that you may find useful for product applications.

- [Western Blot](#)
- [Blocking Peptides](#)
- [Dot Blot](#)
- [Immunohistochemistry](#)
- [Immunofluorescence](#)
- [Immunoprecipitation](#)
- [Flow Cytometry](#)
- [Cell Culture](#)

CD68 Antibody (clone KP1) - Images



Anti-CD68 antibody IHC of human thymus.

CD68 Antibody (clone KP1) - Background

Could play a role in phagocytic activities of tissue macrophages, both in intracellular lysosomal metabolism and extracellular cell-cell and cell-pathogen interactions. Binds to tissue- and organ-specific lectins or selectins, allowing homing of macrophage subsets to particular sites. Rapid recirculation of CD68 from endosomes and lysosomes to the plasma membrane may allow macrophages to crawl over selectin-bearing substrates or other cells.

CD68 Antibody (clone KP1) - References

Holness C.L., et al. Blood 81:1607-1613(1993).
Kalnine N., et al. Submitted (JUL-2003) to the EMBL/GenBank/DDBJ databases.
Ota T., et al. Nat. Genet. 36:40-45(2004).
Suzuki Y., et al. Submitted (APR-2005) to the EMBL/GenBank/DDBJ databases.
Zody M.C., et al. Nature 440:1045-1049(2006).