

**APOC1 / Apolipoprotein C I Antibody**  
**Goat Polyclonal Antibody**  
**Catalog # ALS12534****Specification**

---

**APOC1 / Apolipoprotein C I Antibody - Product Information**

Application	IHC
Primary Accession	<a href="#">P02654</a>
Reactivity	Human
Host	Goat
Clonality	Polyclonal
Calculated MW	9kDa KDa

**APOC1 / Apolipoprotein C I Antibody - Additional Information****Gene ID** 341**Other Names**

Apolipoprotein C-I, Apo-CI, ApoC-I, Apolipoprotein C1, Truncated apolipoprotein C-I, APOC1

**Target/Specificity**

Recognizes human Apo C-I in plasma and lipoproteins. Does not cross-react with plasma Apo A-I, Apo A-II, Apo B-100, Apo C-II, Apo C-III and Apo-E.

**Reconstitution & Storage**

Long term: -20°C; Short term: +4°C. Avoid repeat freeze-thaw cycles.

**Precautions**

APOC1 / Apolipoprotein C I Antibody is for research use only and not for use in diagnostic or therapeutic procedures.

**APOC1 / Apolipoprotein C I Antibody - Protein Information****Name** APOC1**Function**

Inhibitor of lipoprotein binding to the low density lipoprotein (LDL) receptor, LDL receptor-related protein, and very low density lipoprotein (VLDL) receptor. Associates with high density lipoproteins (HDL) and the triacylglycerol-rich lipoproteins in the plasma and makes up about 10% of the protein of the VLDL and 2% of that of HDL. Appears to interfere directly with fatty acid uptake and is also the major plasma inhibitor of cholesteryl ester transfer protein (CETP). Binds free fatty acids and reduces their intracellular esterification. Modulates the interaction of APOE with beta-migrating VLDL and inhibits binding of beta-VLDL to the LDL receptor-related protein.

**Cellular Location**

Secreted.

**Tissue Location**

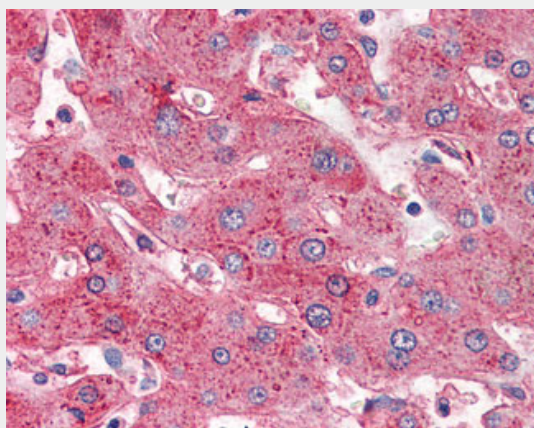
Synthesized mainly in liver and to a minor degree in intestine. Also found in the lung and spleen

### **APOC1 / Apolipoprotein C I Antibody - Protocols**

Provided below are standard protocols that you may find useful for product applications.

- [Western Blot](#)
- [Blocking Peptides](#)
- [Dot Blot](#)
- [Immunohistochemistry](#)
- [Immunofluorescence](#)
- [Immunoprecipitation](#)
- [Flow Cytometry](#)
- [Cell Culture](#)

### **APOC1 / Apolipoprotein C I Antibody - Images**



Anti-APOC1 / Apolipoprotein C I antibody IHC of human liver.

### **APOC1 / Apolipoprotein C I Antibody - Background**

Inhibitor of lipoprotein binding to the low density lipoprotein (LDL) receptor, LDL receptor-related protein, and very low density lipoprotein (VLDL) receptor. Associates with high density lipoproteins (HDL) and the triacylglycerol-rich lipoproteins in the plasma and makes up about 10% of the protein of the VLDL and 2% of that of HDL. Appears to interfere directly with fatty acid uptake and is also the major plasma inhibitor of cholesteryl ester transfer protein (CETP). Binds free fatty acids and reduces their intracellular esterification. Modulates the interaction of APOE with beta-migrating VLDL and inhibits binding of beta-VLDL to the LDL receptor-related protein.

### **APOC1 / Apolipoprotein C I Antibody - References**

Knott T.J., et al. Nucleic Acids Res. 12:3909-3915(1984).  
Lauer S.J., et al. J. Biol. Chem. 263:7277-7286(1988).  
Freitas E.M., et al. DNA Seq. 9:89-100(1998).  
Nickerson D.A., et al. Submitted (SEP-2003) to the EMBL/GenBank/DDBJ databases.  
Kallnine N., et al. Submitted (MAY-2003) to the EMBL/GenBank/DDBJ databases.