

HSPB1 / HSP27 Antibody (aa1-205, clone 2A5)
Mouse Monoclonal Antibody
Catalog # ALS12548**Specification**

HSPB1 / HSP27 Antibody (aa1-205, clone 2A5) - Product Information

Application	IHC, WB
Primary Accession	P04792
Reactivity	Human
Host	Mouse
Clonality	Monoclonal
Calculated MW	23kDa KDa

HSPB1 / HSP27 Antibody (aa1-205, clone 2A5) - Additional Information**Gene ID** 3315**Other Names**

Heat shock protein beta-1, HspB1, 28 kDa heat shock protein, Estrogen-regulated 24 kDa protein, Heat shock 27 kDa protein, HSP 27, Stress-responsive protein 27, SRP27, HSPB1, HSP27, HSP28

Reconstitution & Storage

Long term: -20°C; Short term: +4°C; Avoid freeze-thaw cycles.

Precautions

HSPB1 / HSP27 Antibody (aa1-205, clone 2A5) is for research use only and not for use in diagnostic or therapeutic procedures.

HSPB1 / HSP27 Antibody (aa1-205, clone 2A5) - Protein Information**Name** HSPB1**Synonyms** HSP27, HSP28**Function**

Small heat shock protein which functions as a molecular chaperone probably maintaining denatured proteins in a folding-competent state (PubMed:10383393, PubMed:20178975). Plays a role in stress resistance and actin organization (PubMed:19166925). Through its molecular chaperone activity may regulate numerous biological processes including the phosphorylation and the axonal transport of neurofilament proteins (PubMed:23728742).

Cellular Location

Cytoplasm. Nucleus Cytoplasm, cytoskeleton, spindle Note=Cytoplasmic in interphase cells. Colocalizes with mitotic spindles in mitotic cells. Translocates to the nucleus during heat shock and

resides in sub-nuclear structures known as SC35 speckles or nuclear splicing speckles.

Tissue Location

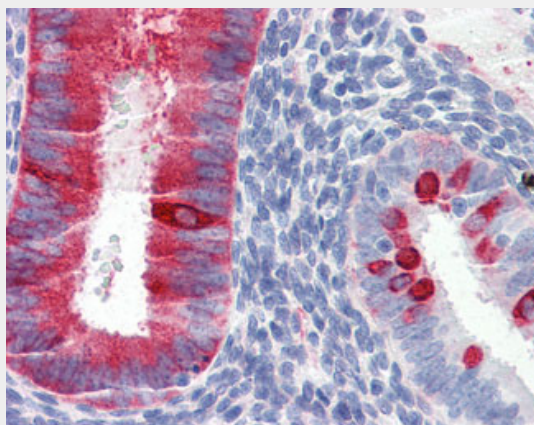
Detected in all tissues tested: skeletal muscle, heart, aorta, large intestine, small intestine, stomach, esophagus, bladder, adrenal gland, thyroid, pancreas, testis, adipose tissue, kidney, liver, spleen, cerebral cortex, blood serum and cerebrospinal fluid. Highest levels are found in the heart and in tissues composed of striated and smooth muscle.

HSPB1 / HSP27 Antibody (aa1-205, clone 2A5) - Protocols

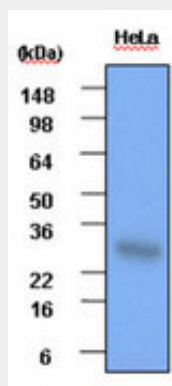
Provided below are standard protocols that you may find useful for product applications.

- [Western Blot](#)
- [Blocking Peptides](#)
- [Dot Blot](#)
- [Immunohistochemistry](#)
- [Immunofluorescence](#)
- [Immunoprecipitation](#)
- [Flow Cytometry](#)
- [Cell Culture](#)

HSPB1 / HSP27 Antibody (aa1-205, clone 2A5) - Images



Anti-HSPB1 antibody IHC of human uterus.



Cell lysates of HeLa (each 30 ug) were resolved by SDS-PAGE, transferred to PVDF membrane and...

HSPB1 / HSP27 Antibody (aa1-205, clone 2A5) - Background

Involved in stress resistance and actin organization.

HSPB1 / HSP27 Antibody (aa1-205, clone 2A5) - References

Hickey E., et al. Nucleic Acids Res. 14:4127-4145(1986).
Carper S.W., et al. Nucleic Acids Res. 18:6457-6457(1990).
Hino M., et al. Biochem. Biophys. Res. Commun. 271:164-169(2000).
Briolay J., et al. Submitted (JUN-1993) to the EMBL/GenBank/DDBJ databases.
Yu W., et al. Genome Res. 7:353-358(1997).