

**PDCD4 Antibody (aa1-469, clone K4C1)**  
**Mouse Monoclonal Antibody**  
**Catalog # ALS12564**

**Specification**

---

**PDCD4 Antibody (aa1-469, clone K4C1) - Product Information**

Application	IHC, WB
Primary Accession	<a href="#">Q53EL6</a>
Reactivity	Human
Host	Mouse
Clonality	Monoclonal
Calculated MW	52kDa KDa

**PDCD4 Antibody (aa1-469, clone K4C1) - Additional Information**

**Gene ID** 27250

**Other Names**

Programmed cell death protein 4, Neoplastic transformation inhibitor protein, Nuclear antigen H731-like, Protein 197/15a, PDCD4, H731

**Reconstitution & Storage**

Long term: -20°C; Short term: +4°C; Avoid freeze-thaw cycles.

**Precautions**

PDCD4 Antibody (aa1-469, clone K4C1) is for research use only and not for use in diagnostic or therapeutic procedures.

**PDCD4 Antibody (aa1-469, clone K4C1) - Protein Information**

**Name** PDCD4

**Synonyms** H731

**Function**

Inhibits translation initiation and cap-dependent translation. May exert its function by hindering the interaction between EIF4A1 and EIF4G. Inhibits the helicase activity of EIF4A. Modulates the activation of JUN kinase. Down-regulates the expression of MAP4K1, thus inhibiting events important in driving invasion, namely, MAPK85 activation and consequent JUN-dependent transcription. May play a role in apoptosis. Tumor suppressor. Inhibits tumor promoter-induced neoplastic transformation. Binds RNA (By similarity).

**Cellular Location**

Nucleus {ECO:0000250|UniProtKB:Q61823}. Cytoplasm {ECO:0000250|UniProtKB:Q61823}. Note=Shuttles between the nucleus and cytoplasm (By similarity). Predominantly nuclear under normal growth conditions, and when phosphorylated at Ser-457 (PubMed:16357133)

**Tissue Location**

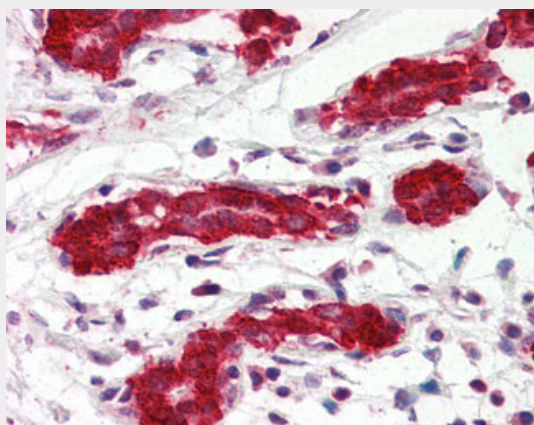
Up-regulated in proliferative cells. Highly expressed in epithelial cells of the mammary gland.  
Reduced expression in lung cancer and colon carcinoma.

#### **PDCD4 Antibody (aa1-469, clone K4C1) - Protocols**

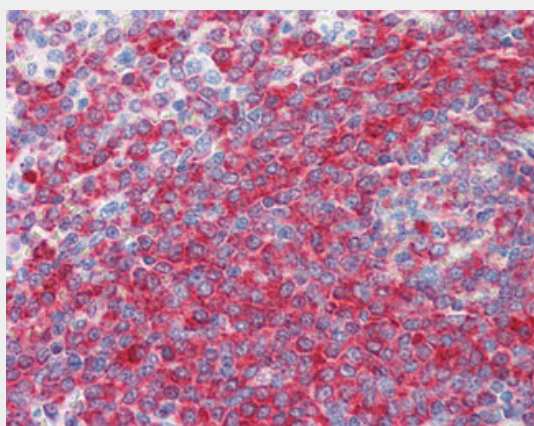
Provided below are standard protocols that you may find useful for product applications.

- [Western Blot](#)
- [Blocking Peptides](#)
- [Dot Blot](#)
- [Immunohistochemistry](#)
- [Immunofluorescence](#)
- [Immunoprecipitation](#)
- [Flow Cytometry](#)
- [Cell Culture](#)

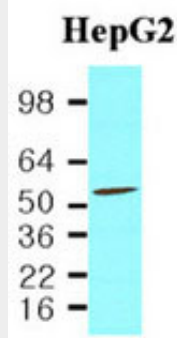
#### **PDCD4 Antibody (aa1-469, clone K4C1) - Images**



Anti-PDCD4 antibody IHC of human breast.



Anti-PDCD4 antibody IHC of human spleen.



Cell lysates of HepG2(40 ug) were resolved by SDS-PAGE, transferred to NC membrane and probed...

#### **PDCD4 Antibody (aa1-469, clone K4C1) - Background**

Inhibits translation initiation and cap-dependent translation. May exert its function by hindering the interaction between EIF4A1 and EIF4G. Inhibits the helicase activity of EIF4A. Modulates the activation of JUN kinase. Down-regulates the expression of MAP4K1, thus inhibiting events important in driving invasion, namely, MAPK85 activation and consequent JUN-dependent transcription. May play a role in apoptosis. Tumor suppressor. Inhibits tumor promoter-induced neoplastic transformation. Binds RNA (By similarity).

#### **PDCD4 Antibody (aa1-469, clone K4C1) - References**

Matsuhashi S.,et al.Res. Commun. Biochem. Cell Mol. Biol. 1:109-120(1997).  
Azzoni L.,et al.J. Immunol. 161:3493-3500(1998).  
Ota T.,et al.Nat. Genet. 36:40-45(2004).  
Totoki Y.,et al.Submitted (APR-2005) to the EMBL/GenBank/DDBJ databases.  
Deloukas P.,et al.Nature 429:375-381(2004).