

KLF4 Antibody (aa1-170, clone AT4E6)
Mouse Monoclonal Antibody
Catalog # ALS12580**Specification**

KLF4 Antibody (aa1-170, clone AT4E6) - Product Information

Application	IHC, WB
Primary Accession	O43474
Reactivity	Human
Host	Mouse
Clonality	Monoclonal
Calculated MW	55kDa KDa

KLF4 Antibody (aa1-170, clone AT4E6) - Additional Information**Gene ID** 9314**Other Names**

Krueppel-like factor 4, Epithelial zinc finger protein EZF, Gut-enriched krueppel-like factor, KLF4, EZF, GKLF

Reconstitution & Storage

Short term 4°C, long term aliquot and store at -20°C, avoid freeze thaw cycles.

Precautions

KLF4 Antibody (aa1-170, clone AT4E6) is for research use only and not for use in diagnostic or therapeutic procedures.

KLF4 Antibody (aa1-170, clone AT4E6) - Protein Information**Name** KLF4 ([HGNC:6348](#))**Synonyms** EZF, GKLF**Function**

Transcription factor; can act both as activator and as repressor. Binds the 5'-CACCC-3' core sequence. Binds to the promoter region of its own gene and can activate its own transcription. Regulates the expression of key transcription factors during embryonic development. Plays an important role in maintaining embryonic stem cells, and in preventing their differentiation. Required for establishing the barrier function of the skin and for postnatal maturation and maintenance of the ocular surface. Involved in the differentiation of epithelial cells and may also function in skeletal and kidney development. Contributes to the down-regulation of p53/TP53 transcription.

Cellular Location

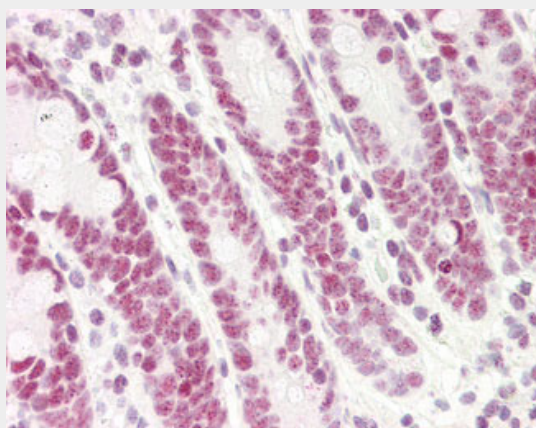
Nucleus {ECO:0000250|UniProtKB:Q60793}. Cytoplasm {ECO:0000250|UniProtKB:Q60793}

KLF4 Antibody (aa1-170, clone AT4E6) - Protocols

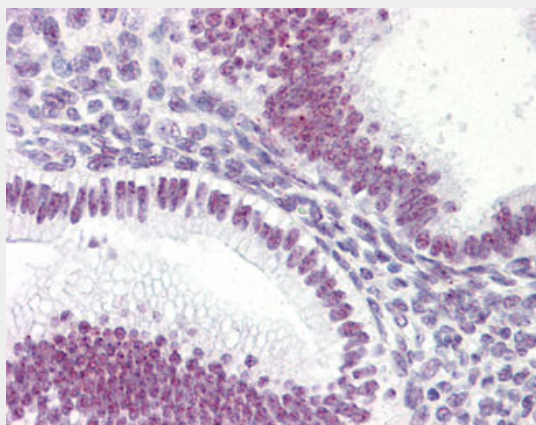
Provided below are standard protocols that you may find useful for product applications.

- [Western Blot](#)
- [Blocking Peptides](#)
- [Dot Blot](#)
- [Immunohistochemistry](#)
- [Immunofluorescence](#)
- [Immunoprecipitation](#)
- [Flow Cytometry](#)
- [Cell Culture](#)

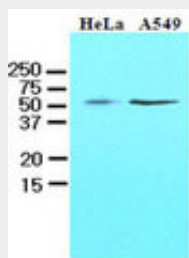
KLF4 Antibody (aa1-170, clone AT4E6) - Images



Anti-KLF4 antibody IHC of human small intestine.



Anti-KLF4 antibody IHC of human uterus.



Cell lysates of HeLa and A549 (40 ug) were resolved by SDS-PAGE, transferred to NC membrane

and...

KLF4 Antibody (aa1-170, clone AT4E6) - Background

Transcription factor; can act both as activator and as repressor. Binds the 5'-CACCC-3' core sequence. Binds to the promoter region of its own gene and can activate its own transcription. Regulates the expression of key transcription factors during embryonic development. Plays an important role in maintaining embryonic stem cells, and in preventing their differentiation. Required for establishing the barrier function of the skin and for postnatal maturation and maintenance of the ocular surface. Involved in the differentiation of epithelial cells and may also function in skeletal and kidney development. Contributes to the down-regulation of p53/TP53 transcription.

KLF4 Antibody (aa1-170, clone AT4E6) - References

Yet S.-F.,et al.J. Biol. Chem. 273:1026-1031(1998).
Foster K.W.,et al.Cell Growth Differ. 10:423-434(1999).
Camacho-Vanegas O.,et al.FASEB J. 27:432-436(2013).
Garrett-Sinha L.A.,et al.Submitted (SEP-1996) to the EMBL/GenBank/DDBJ databases.
Ota T.,et al.Nat. Genet. 36:40-45(2004).