

YWHAQ / 14-3-3 Theta Antibody (aa1-245, clone AT1A1)
Mouse Monoclonal Antibody
Catalog # ALS12581**Specification**

YWHAQ / 14-3-3 Theta Antibody (aa1-245, clone AT1A1) - Product Information

Application	WB, IHC
Primary Accession	P27348
Reactivity	Human
Host	Mouse
Clonality	Monoclonal
Calculated MW	28kDa KDa

YWHAQ / 14-3-3 Theta Antibody (aa1-245, clone AT1A1) - Additional Information**Gene ID** 10971**Other Names**

14-3-3 protein theta, 14-3-3 protein T-cell, 14-3-3 protein tau, Protein HS1, YWHAQ

Reconstitution & Storage

Short term 4°C, long term aliquot and store at -20°C, avoid freeze thaw cycles.

Precautions

YWHAQ / 14-3-3 Theta Antibody (aa1-245, clone AT1A1) is for research use only and not for use in diagnostic or therapeutic procedures.

YWHAQ / 14-3-3 Theta Antibody (aa1-245, clone AT1A1) - Protein Information**Name** YWHAQ**Function**

Adapter protein implicated in the regulation of a large spectrum of both general and specialized signaling pathways. Binds to a large number of partners, usually by recognition of a phosphoserine or phosphothreonine motif. Binding generally results in the modulation of the activity of the binding partner. Negatively regulates the kinase activity of PDPK1.

Cellular Location

Cytoplasm. Note=In neurons, axonally transported to the nerve terminals

Tissue Location

Abundantly expressed in brain, heart and pancreas, and at lower levels in kidney and placenta. Up-regulated in the lumbar spinal cord from patients with sporadic amyotrophic lateral sclerosis (ALS) compared with controls, with highest levels of expression in individuals with predominant lower motor neuron involvement

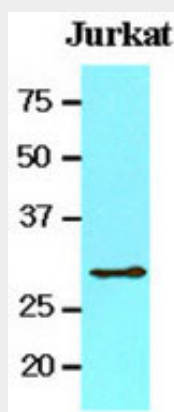
Volume

50 µl

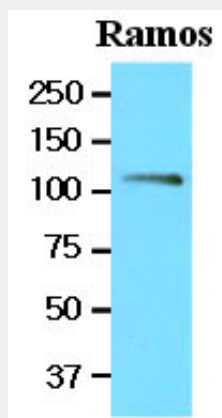
YWHAQ / 14-3-3 Theta Antibody (aa1-245, clone AT1A1) - Protocols

Provided below are standard protocols that you may find useful for product applications.

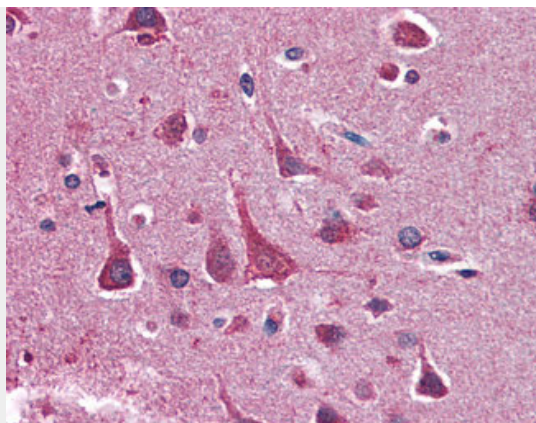
- [Western Blot](#)
- [Blocking Peptides](#)
- [Dot Blot](#)
- [Immunohistochemistry](#)
- [Immunofluorescence](#)
- [Immunoprecipitation](#)
- [Flow Cytometry](#)
- [Cell Culture](#)

YWHAQ / 14-3-3 Theta Antibody (aa1-245, clone AT1A1) - Images

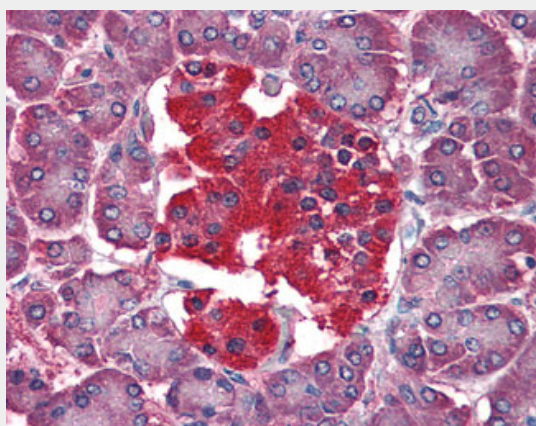
0



0



Anti-YWHAQ antibody IHC of human brain, cortex.



Anti-YWHAQ antibody IHC of human pancreas.

YWHAQ / 14-3-3 Theta Antibody (aa1-245, clone AT1A1) - Background

Adapter protein implicated in the regulation of a large spectrum of both general and specialized signaling pathways. Binds to a large number of partners, usually by recognition of a phosphoserine or phosphothreonine motif. Binding generally results in the modulation of the activity of the binding partner. Negatively regulates the kinase activity of PDPK1.

YWHAQ / 14-3-3 Theta Antibody (aa1-245, clone AT1A1) - References

Nielsen P.J.,et al.Biochim. Biophys. Acta 1088:425-428(1991).
Leffers H.,et al.J. Mol. Biol. 231:982-998(1993).
Kalnina N.,et al.Submitted (OCT-2004) to the EMBL/GenBank/DDBJ databases.
Mural R.J.,et al.Submitted (SEP-2005) to the EMBL/GenBank/DDBJ databases.
Gevaert K.,et al.Nat. Biotechnol. 21:566-569(2003).